

THE GROUND FISH MANAGEMENT TEAM REPORT ON CONSIDERATION OF INSEASON ADJUSTMENTS

The Groundfish Management Team (GMT) considered the most recent information on the status of ongoing fisheries, research, and requests from industry, and report that there is no need for inseason action for the remainder of 2014 or for the start of the 2015 seasons.

1. INFORMATIONAL ITEMS

1.1. California Recreational

California Scorpionfish: The California Department of Fish and Wildlife (CDFW) closed both the commercial and recreational fishery for California scorpionfish on Saturday, November 15th. The fishery will remain closed statewide through the end of the year. The annual catch limit (ACL) specified in federal regulation for 2014 is 117 metric tons (mt). Based on recent catch estimates from the recreational fishery and landing receipt totals from the commercial fishery, CDFW projected that the 2014 ACL for California scorpionfish would be exceeded unless the fishery was closed.

Given that the ACL in 2015 and 2016 will be decreasing (114 mt and 111 mt, respectively) CDFW recommended that modifications be made to the recreational fishery to ensure that harvest stays within allowable limits. The Groundfish Advisory Subpanel (GAP) requested CDFW analyze the impacts of a recreational closure during the months of September through December to reduce mortality during the 2015 season. Analysis of this season results in a projected mortality of 95.7 mt for all sectors providing a residual of 18.3 mt between projected mortality and the ACL.

Black Rockfish: The GMT was briefed that the CDFW recommends instituting a five fish sub-bag limit for black rockfish within the ten fish rockfish, cabezon and greenling (RGB) bag limit in the recreational fishery in 2015. Updated catch projections incorporating data from 2013 and 2014 indicate that the California harvest guideline could be exceeded without reductions to either the season length or bag limit. Under the current RCG bag limit, up to ten black rockfish can be retained. The five fish sub-bag limit is projected by CDFW to result in 319.3 mt of mortality in the recreational fishery. Combined with the projected mortality of 59 mt in the commercial nearshore fishery, the total mortality projected for 2015 is 378.3 mt, which is well below the 419 mt statewide harvest guideline.

1.2. Comment on the 2013 Groundfish Mortality Report

The West Coast Groundfish Observer Program recently published the 2013 Groundfish Mortality Report ([REVISED Informational Report 4, November 2014](#)). The GMT will review and discuss this document at the January GMT meeting, and provide comments to the Council during the March or April 2015 Council meetings, if needed.

1.3. Shoreside Whiting Catch and Attainment Update for 2014

Figure 1 and Table 1 provide information regarding catch of Pacific whiting by the shoreside whiting trawl fishery. Table 1 provides historical whiting catch (2011 – 2013) relative to the updated catch for 2014 (data were acquired on November 17, 2014) as (a) cumulative catch throughout each year and (b) monthly catch each year. This information provides some idea of attainment rates in the past relative to the current rate of attainment. Table 1 shows annual whiting allocations, reapportionments, and catch for 2011 – 2014.

1.4. Preliminary Catch Estimates for the Non-Tribal Trawl Fisheries

Table 2 provides catch updates for Pacific whiting, overfished species, and Chinook salmon for non-Tribal trawl fisheries. Within the shorebased Individual Fishing Quota (IFQ) fishery, salmon catch is separated by (a) midwater whiting trips, (b) midwater widow/yellowtail rockfish trips, and (c) bottom trawl trips.

1.5. Scorecard Update

Overfished species scorecards are presented for 2014 (Table 3) and 2015 (Table 4). The 2014 scorecard reflects the recent rule making that transferred 3.0 mt of darkblotched rockfish from the Mothership sector to the Catcher Processor (C/P) sector, and 3.0 mt of darkblotched rockfish from Incidental Open Access to the C/P sector ([Federal Register Notice, Vol. 79, No. 218, Pg. 67905-67906, November 12, 2014](#)).

Shoreside Whiting Catch and Attainment Update for 2014

Figure 1. Cumulative Pacific whiting catch for the shoreside limited entry trawl fishery for 2011 – 2014. *Left panel:* cumulative monthly attainment of whiting trips from June through December of 2011-2013, and June through October of 2014. *Right panel:* monthly catch of Pacific whiting on whiting trips over the same period. These data show that directed shorebased whiting catch typically plateaus by November of each year. November of 2012 showed substantial catch due to a late reappportionment of tribal pounds. These data were from the NMFS West Coast IFQ Vessel Accounts System, queried on November 4, 2014.

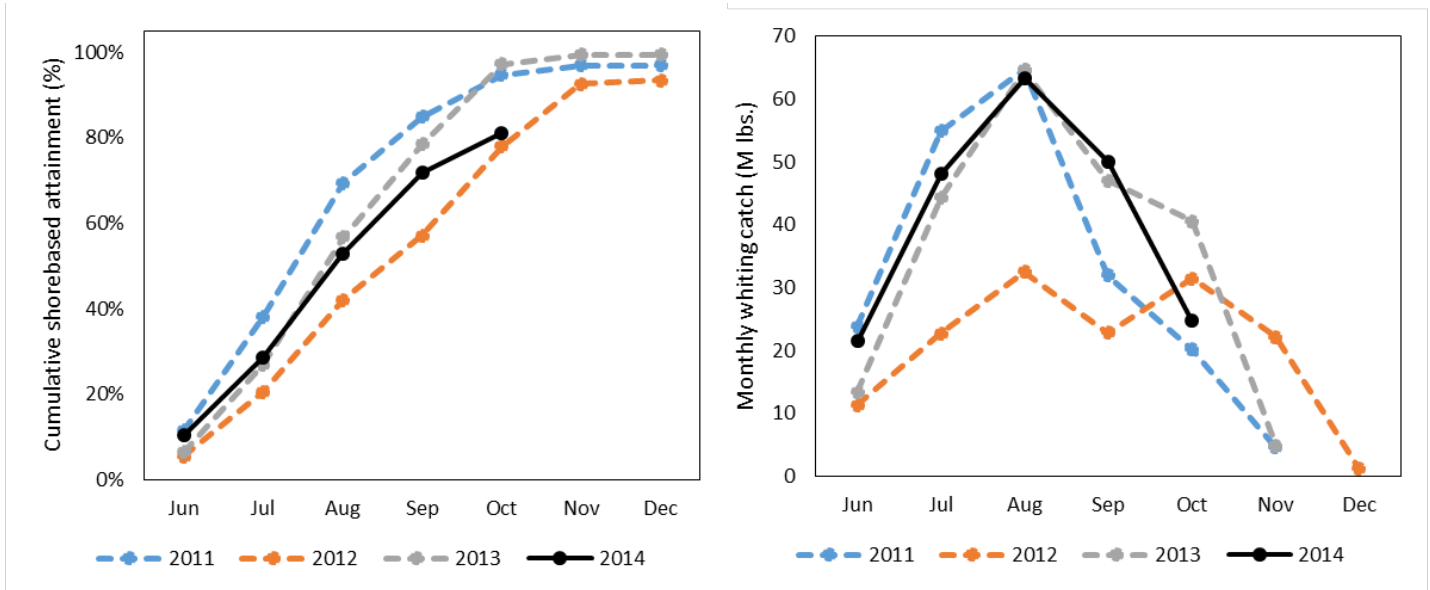


Table 1. Shoreside whiting attainment for 2011 – 2014. Data downloaded 11/17/2014 from NMFS vessel accounts QP data base for 2014 results and 10/31/2014 from PacFIN Answers for the remaining years.

Year	Shoreside Initial Allocation	Shoreside Allocation + Reapportionment	Year-end PacFIN Landings	% of Year-end Allocation (PacFIN)	WG COP Total Mortality
2011	92,818	92,818	89,826	97%	90,759
2012	56,902	68,662	65,171	95%	65,416
2013	85,697	98,297	96,857	99%	97,327
2014	108,935	119,435	97,555	82%	

Preliminary Catch Estimates for the Non-Tribal Trawl Fisheries.

Table 2. Preliminary catch estimates for the non-tribal trawl fisheries. Groundfish values are in metric tons (mt) whereas Chinook salmon are in numbers of fish. For the shorebased IFQ sector, groundfish estimates include all gear types (bottom trawl, midwater, and fixed gears). Chinook numbers for the shorebased IFQ sector include those from midwater trawl which is further stratified by target strategy (Pacific whiting and yellowtail/widow) as well as bottom trawl.

Sector	Species	Catch to Date (MT for GF, # For Chinook)	Allocation (mt)	% Attainment	Amount Remaining (mt)
MS a/	Whiting	60,167	73,049	82%	12,882.0
	Darkblotched	7.2	9.3	78%	2.1
	Canary	0.4	5.4	7%	5.0
	Widow	39.7	120.0	33%	80.3
	POP	3.6	7.2	50%	3.6
	Chinook Salmon	2,902	0.05	ratio of Chinook # per Whiting MT	
CP a/	Whiting	102,165	103,486	99%	1,321.0
	Darkblotched	3.4	9.0	38%	5.6
	Canary	0.3	7.6	4%	7.3
	Widow	16.6	170.0	10%	153.5
	POP	0.3	10.2	3%	9.9
	Chinook Salmon	3,780	0.04	ratio of Chinook # per Whiting MT	
SB IFQ b/	Whiting	97,555	119,435	82%	21,880.27
	Darkblotched	73.2	278.4	26%	205.22
	Canary	10.5	41.1	26%	30.60
	Widow	448.9	993.8	45%	544.94
	POP	34.2	112.3	30%	78.09
	Chinook MDT Total c/	7,551	0.08	ratio of Chinook # MDT per Whiting MT	
	---Chinook PWHT Only	6,757	0.07	ratio of Chinook # PWHT Only per Whiting MT	
	---Chinook YT/Widow Only	794			
	Chinook Bottom Trawl d/	872			
a/ Data queried from NORPAC on 11/16/2014.					
b/ Data queried from the NMFS vessel Accounts QP database on 11/17/2014 and includes all gear types (midwater, bottom trawl, and fixed gears), both landings and discards (http://www.westcoast.fisheries.noaa.gov/fisheries/groundfish_catch_shares/index.html).					
c/ Chinook salmon MDT Total includes impacts from all midwater gear types (both whiting and yellowtail/widow target strategies) based on a query from 11/16/2014. Impacts by target strategies are provided as well.					
d/ Chinook salmon Bottom Trawl data includes only those impacts from bottom trawl gears.					

Table 3. Overfished Species Scorecard for 2014 as of November.

Scorecard for November 2014. Allocations ^a and projected mortality impacts (mt) of overfished groundfish species for 2014.														
Fishery	Bocaccio b/		Canary		Cowcod b/		Dkbl		Petrale		POP		Yelloweye	
<i>Date</i> : 17 November 2014	Allocation a/	Projected Impacts	Allocation a/	Projected Impacts	Allocation a/	Projected Impacts	Allocation a/	Projected Impacts	Allocation a/	Projected Impacts	Allocation a/	Projected Impacts	Allocation a/	Projected Impacts
Off the Top Deductions	8.4	9.3	17.5	17.2	0.1	0.2	17.8	17.5	234.0	234.0	16.5	13.2	5.8	5.5
EFPC/	6.0	6.0	1.5	1.5	0.0	0.0	0.2	0.2	0.0	0.0	0.0	0.0	0.0	0.0
Research d/	1.7	2.6	4.5	4.5	0.1	0.2	2.1	2.1	11.6	11.6	5.2	5.2	3.3	3.0
Incidental OA e/	0.7	0.7	2.0	2.0	--	--	15.4	15.0	2.4	2.4	0.4	0.6	0.2	0.2
Tribal f/			9.5	9.2			0.1	0.2	220.0	220.0	10.9	7.4	2.3	2.3
Bottom Trawl			0.8	0.8			0.1	0.1	45.4	70.0	3.7	3.7		0.0
Troll			0.5	0.5			0.0							0.0
Fixed gear			0.3	0.3			0.0						2.3	2.3
mid-water			3.6	3.6			0.0							0.0
whiting			4.3	4.9				0.3			7.2	11.1		
Trawl Allocations	79.0	79.0	54.1	54.1	1.0	1.0	296.7	296.7	2,383.0	2,383.0	129.7	129.7	1.0	1.0
-SB Trawl	79.0	79.0	41.1	41.1	1.0	1.0	278.4	278.4	2,378.0	2,378.0	112.3	112.3	1.0	1.0
-At-Sea Trawl			13.0	13.0			15.4	15.4	5.0	5.0	17.4	17.4		
a) At-sea whiting MS			5.4	5.4			9.3	9.3			7.2	7.2		
b) At-sea whiting CP			7.6	7.6			9.0	9.0			10.2	10.2		
Non-Trawl Allocation	249.6	125.4	47.4	26.4	1.9	0.8	15.5	4.5	35.0	2.2	6.8	0.2	11.2	10.3
Non-Nearshore	76.2		3.7										1.1	
LE FG				0.8				3.6				0.2		0.4
OA FG				0.1				0.7				0.0		0.0
Directed OA: Nearshore	0.9	0.4	6.4	6.5		0.0		0.2					1.2	1.1
Recreational Groundfish														
WA			3.2	0.9				--	--	--	--	--	2.9	2.9
OR			11.1	4.7				--	--	--	--	--	2.6	2.5
CA	172.5	125.0	23.0	13.4		0.8		--	--	--	--	--	3.4	3.4
TOTAL	337.0	213.7	119.0	97.7	3.0	2.1	330.0	318.7	2,652.0	2,619.2	153.0	143.1	18.0	16.8
2014 Harvest Specification	337	337	119	119	3.0	3.0	330	330	2,652	2,652	153	153	18	18
Difference	0.0	123.3	0.0	21.3	0.0	0.9	0.0	11.3	0.0	32.8	0.0	9.9	0.0	1.2
Percent of ACL	100.0%	63.4%	100.0%	82.1%	100.0%	68.7%	100.0%	96.6%	100.0%	98.8%	100.0%	93.5%	100.0%	93.4%
Key			= not applicable											
		--	= trace, less than 0.1 mt											
			= Fixed Values											
			= off the top deductions											

a/ Formal allocations are represented in the black shaded cells and are specified in regulation in Tables 1b and 1e. The other values in the allocation columns are 1) off the top deductions, 2) set asides from the trawl allocation (at-sea petrale only) 3) ad-hoc allocations recommended in the 2013-14 EIS process, 4) HG for the recreational fisheries for canary and YE.

b/ South of 40°10' N. lat.

c/ EFPs are amounts set aside to accommodate anticipated applications. Values in this table represent the estimates from the 13-14 biennial cycle, which are currently specified in regulation.

d/ Includes NMFS trawl shelf-slope surveys, the IPHC halibut survey, and expected impacts from SRPs and LOAs.

e/ The GMT's best estimate of impacts as analyzed in the 2013-2014 Environmental Impact Statement (Appendix B), which are currently specified in regulation.

f/ Tribal values in the allocation column represent the values in regulation. Projected impacts are the tribes best estimate of catch.

Table 4. Overfished Species Scorecard for 2015.

Scorecard for 2015 [#] . Allocations ^a and projected mortality impacts (mt) of overfished groundfish species for 2015.														
Fishery	Bocaccio b/		Canary		Cowcod b/		Dkbl		Petrale		POP		Yelloweye	
<i>Date: 17 November 2014</i>	Allocation a/	Projected Impacts	Allocation a/	Projected Impacts	Allocation a/	Projected Impacts	Allocation a/	Projected Impacts	Allocation a/	Projected Impacts	Allocation a/	Projected Impacts	Allocation a/	Projected Impacts
Off the Top Deductions	8.3	8.3	15.2	15.2	2.0	2.0	20.8	20.8	236.6	236.6	15.0	15.0	5.8	5.8
EFPC/	3.0	3.0	1.0	1.0	0.0	0.0	0.1	0.1	0.0	0.0	0.0	0.0	0.0	0.0
Research d/	4.6	4.6	4.5	4.5	2.0	2.0	2.1	2.1	14.2	14.2	5.2	5.2	3.3	3.3
Incidental OA e/	0.7	0.7	2.0	2.0	--	--	18.4	18.4	2.4	2.4	0.6	0.6	0.2	0.2
Tribal f/			7.7	7.7			0.2	0.2	220.0	220.0	9.2	9.2	2.3	2.3
Bottom Trawl			0.8	0.8			0.2	0.2	45.4	70.0	3.7	3.7		0.0
Troll			0.5	0.5			0.0							0.0
Fixed gear			0.3	0.3			0.0						2.3	2.3
mid-water			3.6	3.6			0.0							0.0
whiting			4.3	4.9				0.3			7.2	11.1		
Trawl Allocations	81.9	81.9	56.9	56.9	1.4	1.4	301.3	301.3	2,544.4	2,544.4	135.9	135.9	1.0	1.0
-SB Trawl	81.9	81.9	41.1	41.1	1.4	1.4	285.6	285.6	2,539.4	2,539.4	118.5	118.5	1.0	1.0
-At-Sea Trawl			13.7	13.7			15.7	15.7	5.0	5.0	17.4	17.4		
a) At-sea whiting MS			5.6	5.6			6.5	6.5			7.2	7.2		
b) At-sea whiting CP			8.0	8.0			9.2	9.2			10.2	10.2		
Non-Trawl Allocation	258.8	117.6	49.9	26.4	2.6	1.2	15.9	4.9	35.0		7.2	0.3	11.2	9.7
Non-Nearshore	79.1		3.7					4.7				0.3	1.1	0.5
LE FG				0.8						0.3				
OA FG				0.1							0.0			
Directed OA: Nearshore	1.0	0.4	6.4	6.5				0.2		0.0			1.2	1.3
Recreational Groundfish														
WA			3.2	0.9				--		--		--	2.9	2.8
OR			11.1	4.7				--		--		--	2.6	2.2
CA	178.8	117.2	23.0	13.4		1.2		--		--		--	3.4	2.9
TOTAL	349.0	207.8	122.0	98.5	6.0	4.6	338.0	327.0	2,816.0	2,781.0	158.1	151.2	18.0	16.5
2015 Harvest Specification	349	337	122	119	6.0	6.0	338	330	2,816	2,816	158	158	18	18
Difference	0.0	129.2	0.0	20.5	0.0	1.4	0.0	3.0	0.0	35.0	-0.1	6.8	0.0	1.5
Percent of ACL	100.0%	61.7%	100.0%	82.8%	100.0%	76.7%	100.0%	99.1%	100.0%	98.8%	100.1%	95.7%	100.0%	91.8%
Key			= not applicable											
			= trace, less than 0.1 mt											
			= Fixed Values											
			= off the top deductions											

[#] when the final 2015-2016 harvest specifications and management measures rule publishes

a/ Formal allocations are represented in the black shaded cells and are specified in regulation in Tables 1b and 1e. The other values in the allocation columns are 1) off the top deductions, 2) set asides from the trawl allocation (at-sea petrale only) 3) ad-hoc allocations recommended in the 2013-14 EIS process, 4) HG for the recreational fisheries for canary and YE.

b/ South of 40°10' N. lat.

c/ EFPs are amounts set aside to accommodate anticipated applications. Values in this table represent the estimates from the 13-14 biennial cycle, which are currently specified in regulation.

d/ Includes NMFS trawl shelf-slope surveys, the IPHC halibut survey, and expected impacts from SRPs and LOAs.

e/ The GMT's best estimate of impacts as analyzed in the 2015-2016 Environmental Impact Statement (Appendix B), which are currently specified in regulation.

f/ Tribal values in the allocation column represent the the values in regulation. Projected impacts are the tribes best estimate of catch.