



Draft Environmental Impact Statement to Inform Columbia River Basin Hatchery Operations & the Funding of Mitchell Act Hatchery Programs

(AKA: The Mitchell Act EIS)

**NOAA
FISHERIES
SERVICE**



For the Skeptics Among You:

Draft Environmental Impact Statement to Inform
Columbia River Basin Hatchery Operations and
the Funding of Mitchell Act
Hatchery Programs



NOAA

National
Marine
Fisheries
Service





The EIS Evolves:

- Initiated in 2004, the EIS purpose was to develop a strategy for the funding and operation of Mitchell Act programs.
- Early scoping quickly led to two challenges:



The EIS Evolves:

Challenge #1: Broad scope of the Mitchell Act:

“To provide for the conservation of the fishery resources of the Columbia River, establishment, operation, and maintenance of one or more stations in Oregon, Washington, and Idaho, and for the conduct of necessary investigations, surveys, stream improvements, and stocking operations for these purposes.” 52 Stat. 345:



The EIS Evolves:

Challenge #2: Comprehensive Analysis

Mitchell Act production would best be analyzed when the effects of all other, non-Mitchell Act production are analyzed as well.



Solutions

- Center each alternative around a **policy direction** that would guide NOAA's decisions on hatchery production – not on particular operations. Use a common sense “implementation scenario” to illustrate each alternative.
- Expand scope to include all hatchery production in the Columbia River basin.



Columbia River Basin Hatchery System

- 178 salmon and steelhead programs from 80 hatchery facilities.
- 62 programs funded under the Mitchell Act. In past 10 years, \$11-16 million annually for Mitchell Act hatchery operations producing over 71 million fish (49% of the total production in Columbia River basin).

Hatcheries and Facilities in the Columbia and Snake River Basins

Prepared by Parametrix, Inc. January 19, 2010 (DEIS_Figure_1-3_20100119.mxd).

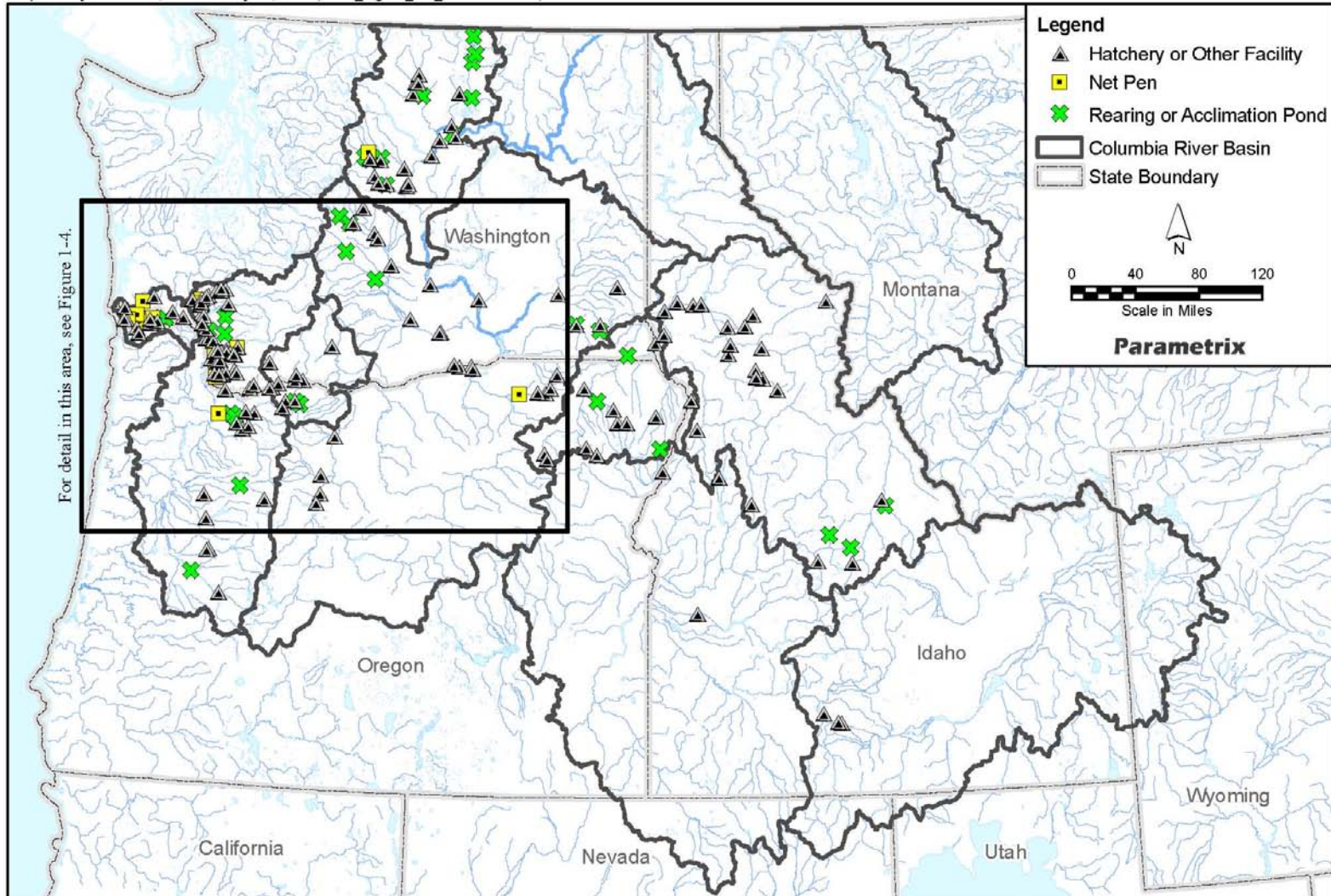


Figure 1-3. Hatcheries and facilities in the Columbia and Snake River basins.



Purpose of EIS

Develop a **policy direction** that will:

- Guide use of Mitchell Act funds.
- Inform NMFS' future decisions under the Endangered Species Act related to Columbia River Basin hatchery programs.



Alternatives

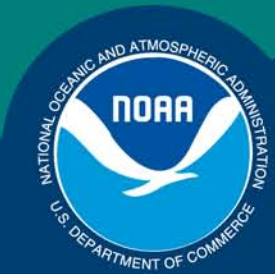
Alternative 1: No-Action (status quo)

Alternative 2: No funding for the Mitchell Act – all Mitchell Act programs terminated. Other programs modified to achieve “intermediate” performance goals.



Alternative 3

Maintain existing goals for Mitchell Act production. Modify all production to achieve “intermediate” performance goals.



Alternative 4

Lower river programs to achieve “stronger” performance standards. Use available hatchery capacity to affirmatively aid 1) recovery (re-introductions) and 2) harvest in ocean and lower river. Upper river programs to achieve “intermediate” performance goals.



Alternative 5

Upper river programs to achieve “stronger” performance goals. Use available hatchery capacity to affirmatively aid 1) recovery (re-introductions) and 2) harvest in upper river. Lower river programs to achieve “intermediate” performance goals.



Alternatives

There is no Preferred Alternative in the draft EIS.

The Policy Direction adopted in the final EIS will likely be a combination of elements from the five alternatives.

Table 1: Summary of Impacts of Alternative 2 (No Action) on Resources					
Resource	Species/Indicator	Effects Relative to Alternative 1 (No Action)			
		Alt 2	Alt 3	Alt 4	Alt 5
Fish	Salmon and Steelhead	Improved	Improved	Improved	Improved
Socio-economics	Hatchery Program Costs	Improved	Improved	No Change	Adverse
	Harvest and Economic Values for Commercial Fisheries	Adverse	Adverse	Adverse	Adverse
	Harvest and Economic Values for Recreational Fisheries	Adverse	Adverse	Adverse	Adverse
	Regional Economic Conditions Columbia River Basin	Adverse	Adverse	Adverse	Adverse
	Regional Economic Impacts Pacific Ocean and Puget Sound	Adverse	Adverse	Adverse	Adverse
Environmental Justice	Native American Tribes	Adverse	Adverse	Adverse	Adverse
	Non-tribal User Groups and Communities of Concern	Adverse	Adverse	Adverse	Adverse
Wildlife	Southern Resident Killer Whale	Adverse	No Change	No Change	No Change



The EIS Will Not . . .

- Determine whether any particular program is compliant with the ESA. Those decisions come later under provisions of the ESA.
- Specify or make determinations on how individual programs should be operated.



The EIS Will Not . . .

- Determine whether any particular program (or Alternative) is compliant with the Management Agreement under *U.S. v. Oregon*. Those decisions are made by the Parties.
- Determine the maximum acceptable amount of production in the basin.



Schedule

- **Draft EIS Issued August 6**
- **Public Review Period Extended to 120-days ending December 3**
- **Final EIS: Spring, 2011**



Public Hearings

- **Two Public Hearings to be scheduled in Idaho**
 - Lewiston either October 6 or 13 (Tentative)
 - Boise (TBD)



Public Hearings

- Sept. 20, 2010; 5:30 to 7:30 p.m.
Clark Regional Wastewater District, 8000 NE 52nd
Crt., Vancouver, WA 98665
- Sept. 24, 2010; 5:30 to 7:30 p.m.
Kennewick Public Library, 1620 S. Union St.,
Kennewick, WA 99338
- Sept. 30, 2010; 5:30 to 7:30 p.m.
Columbia River Maritime Museum, 1792 Marine
Dr., Astoria, OR 97103

Science, Service, Stewardship



WWW.NWR.NOAA.GOV

[/Salmon-Harvest-Hatcheries/
Hatcheries/MA-EIS.cfm](http://WWW.NWR.NOAA.GOV/Salmon-Harvest-Hatcheries/Hatcheries/MA-EIS.cfm)