

Appendix F: Historical Landings and Revenue in Groundfish Fisheries

Table of Contents

Introduction.....	5
Landings and Revenue by Species and Species Groups	7
Landing and Revenue by Nonwhiting Fishery Sectors	11
Landings by Whiting Sectors	16
Landings by Month	18
Landings by Port	20
Participation	30
Figures.....	35

Tables

Table 1. Landings (commercial and tribal, at sea and shoreside) by species group (mt), 1998-2009	7
Table 2. Ex-vessel revenue (commercial and tribal, at sea and shoreside) by species group in current (2009) dollars, \$1,000s, 1998-2009.	7
Table 3. Groundfish landings (commercial and tribal, at sea and shoreside) by species or species group (mt), 1998-2009.	8
Table 4. Groundfish ex-vessel revenue (commercial and tribal, at sea and shoreside) by species or species group in current (2009) dollars, \$1,000s, 1998-2009.	9
Table 5. Groundfish landings (commercial and tribal, at sea and shoreside) by gear type (mt), 1998-2009.	10
Table 6. Groundfish ex-vessel revenue (commercial and tribal, at sea and shoreside) by gear type in current (2009) dollars, \$1,000s, 1998-2009.	10
Table 7. Nonwhiting limited entry trawl landings by groundfish species or species group (mt), 2005-2009.	11
Table 8. Nonwhiting limited entry trawl ex-vessel revenue by groundfish species or species group in current (2009) dollars, \$1,000s, 2005-2009.	11
Table 9. Limited entry fixed gear landings by groundfish species or species group (mt), 2005-2009.....	12
Table 10. Limited entry fixed gear ex-vessel revenue by groundfish species or species group in current (2009) dollars, \$1,000s, 2005-2009.	12
Table 11. Open access fixed gear gear landings by groundfish species or species group (mt), 2005-2009.....	13
Table 12. Open access fixed gear ex-vessel revenue by groundfish species or species group in current (2009) dollars, \$1,000s, 2005-2009.	13
Table 13. Incidentally caught groundfish landings by groundfish species or species group, including by exempted trawl gear (mt), 2005-2009.	14
Table 14. Incidentally caught groundfish ex-vessel revenue by groundfish species or species group, current (2009) dollars, \$1,000s, 2005-2009.	14
Table 15. Treaty nonwhiting groundfish sector landings (mt), 2005-2009.	14
Table 16. Treaty nonwhiting groundfish sector ex-vessel revenue by groundfish species or species group, current (2009) dollars, \$1,000s, 2005-2009.	15
Table 17. Groundfish landings (mt) by nonwhiting sector, 2005-2009.....	15

Table 18. Ex-vessel revenue from groundfish by nonwhiting sector in current (2009) dollars, \$1,000s, 2005-2009	15
Table 19. Landings of Pacific whiting (mt) by whiting sectors, 1998-2009.	16
Table 20. Ex-vessel revenue, current (2009) dollars, \$1,000s, from Pacific whiting by whiting sectors, 1998-2009.	16
Table 21. Landings of nonwhiting species (mt) by whiting sectors, 2008-2009.	17
Table 22. Ex-vessel revenue from nonwhiting species by whiting sectors, \$1,000s, 2008-2009.	17
Table 23. Average landings (mt) per 2-month period by nonwhiting sectors, 2005-2009.	18
Table 24. Average ex-vessel revenue per 2-month period by nonwhiting sectors, \$1,000s, 2005-2009.	18
Table 25. Average landings monthly landings (mt) by whiting sectors, 2005-2009.	18
Table 26. Average monthly ex-vessel revenue by whiting sectors, \$1,000s, 2005-2009.	18
Table 27. Average groundfish landings (mt) per 2-month period by species or species group, all sectors, including tribal, 2005-2009.	19
Table 28. Average groundfish ex-vessel revenue, \$1,000s, per 2-month period by species or species group, all sectors, including tribal, 2005-2009.	19
Table 29. Landings by species or species group (mt) by port group in Washington and Oregon, 2008.	20
Table 30. Landings by species or species group (mt) by port group in California, 2008.	21
Table 31. Landings by species or species group (mt) by port group in Washington and Oregon, 2009.	22
Table 32. Landings by species or species group (mt) by port group in California, 2009.	23
Table 33. Ex-vessel revenue by species or species group by port group in Washington and Oregon in 2008, \$1,000s	24
Table 34. Ex-vessel revenue by species or species group by port group in California in 2008, \$1,000s	25
Table 35. Ex-vessel revenue by species or species group by port group in Washington and Oregon in 2009, \$1,000s	26
Table 36. Ex-vessel revenue by species or species group by port group in California in 2009, \$1,000s	27
Table 37. Landings (mt) by sector and port group, 2008.	28
Table 38. Landings (mt) by sector and port group, 2009.	28
Table 39. Ex-vessel revenue by sector and port group, \$1,000s, 2008.	28
Table 40. Ex-vessel revenue by sector and port group, \$1,000s, 2009.	29
Table 41. Number of vessels making at least one groundfish landing each year by Port Group and Sector, 2005-2006. ...	30
Table 42. Number of vessels making at least one groundfish landing each year by Port Group and Sector, 2007-2008. ...	31
Table 43. Number of vessels making at least one groundfish landing each year by Port Group and Sector, 2005-2009. ...	32
Table 44. Average annual number of commercial vessels making groundfish deliveries by sector and length category, 2005-2009.	33
Table 45. Average annual number of vessels making groundfish deliveries by port group and length category, 2005-2009.	34

Figures

Figure 1. Average ex-vessel revenue by management group (commercial and tribal, at sea and shoreside) in current (2009) dollars as a percent of total, 2005-2009.	35
Figure 2. Nonwhiting groundfish landings (mt), 1998-2009.	36
Figure 3. Nonwhiting groundfish ex-vessel revenue in current (2009) dollars, 1998-2009.	36
Figure 4. Composition of limited entry nonwhiting trawl ex-vessel revenue, average 2005-2009.	37
Figure 5. Composition of limited entry fixed gear ex-vessel revenue, average 2005-2009.	37
Figure 6. Composition of open access fixed gear ex-vessel revenue, average 2005-2009.	38
Figure 7. Composition of incidentally caught groundfish ex-vessel revenue, average 2005-2009.	38
Figure 8. Groundfish ex-vessel revenue, proportion by nonwhiting sectors, 2005-2009.	39
Figure 9. Whiting ex-vessel revenue (mt) by whiting sectors, current (2009) dollars, 1998-2009.	39
Figure 10. Average landings per 2-month period by nonwhiting sectors, 2005-2009.	40
Figure 11. Average monthly landings (mt) by whiting sectors, 2005-2009.	40
Appendix F: Groundfish Landings and Revenue	2

Figure 12. Average landings (mt) per 2-month period of selected groundfish species, 2005-2009.41
Figure 13. Ex-vessel revenue in 2009 by port group, for all species.....41
Figure 14. Ex-vessel revenue in 2009 by port group, for groundfish species.....42
Figure 15. Ex-vessel revenue, \$1,000s, in 2009 by sector and port group.....43
Figure 16. Average number of vessels making landings by sector and port group, 2005-2009.43

Introduction

This appendix contains tabular data and figures showing landings of groundfish and other species and associated ex-vessel revenue by fishery, season, month, and port. Other tables show fishery participation measured by numbers of vessels making landings and vessel length. The data underlying these tables were obtained through a request to the Pacific Fishery Information Network (PacFIN) for customized output from their database. The data source is organized around vessel-level monthly summaries of landings for the period 1998-2009. As part of the request, PacFIN staff coded the data by fishery sectors, which are commonly used in groundfish management. Vessels are generally assigned to these sectors based on their regulatory status; in particular, whether the vessel is registered to a Federal groundfish limited access permit, and the specific endorsement on that permit. Since not all vessels landing groundfish possess a Federal groundfish limited access permit, some fishery sectors comprise vessels identified based on the composition of their landings. The following criteria were used to identify 12 fishery sectors:

1. Whiting catcher-processor sector: PARGRP=C. AGID =N. Gear Group is TWL. DRVID=PROC
2. Whiting mothership sector: PARGRP=C. AGID =N. Gear Group is TWL. DRVID<>PROC
3. Shoreside whiting sector: PARGRP=C. AGID = O, C or W. whiting is at least 50% of landing by weight. Gear Group is TWL. Valid trawl endorsement.¹
4. Shoreside nonwhiting trawl sector: PARGRP=C. AGID = O, C or W. whiting is less than 50% of landing by weight. groundfish (sp.mgrp) is at least 50% of landing by weight. Groundfish (sp.mgrp) RWT > California halibut RWT; pink shrimp, ridgbeback prawn, or spot prawn (PHSP, RPRW, SPRW) RWT < 100 lbs, Gear Group is TWL. Valid trawl endorsement.
5. Limited entry fixed gear sector: PARGRP=C. AGID = O, C or W. groundfish (sp.mgrp)is at least 50% of landing by weight. Gear Group is HKL or POT. Valid longline endorsement or pot gear endorsement.
6. Open access fixed gear sector: PARGRP=C. AGID = O, C or W. groundfish (sp.mgrp)is at least 50% of landing by weight. Gear Group is HKL or POT. No valid endorsement for gear used.
7. Incidentally-caught groundfish (including exempted trawl): PARGRP=C. area. AGID = O, C or W. groundfish (sp.mgrp) RWT is > 0.
8. Commercial nongroundfish sector: PARGRP=C. AGID = O, C or W. groundfish (sp.mgrp) RWT is = 0.
9. Treaty mothership whiting sector: PARGRP=I. AGID =N. whiting is at least 50% of catch by weight. Gear Group is TWL. PROC is a mothership.
10. Treaty shoreside whiting sector: PARGRP=I. AGID = O, C or W. whiting is at least 50% of landing by weight. Gear Group is TWL.
11. Treaty Shoreside nonwhiting groundfish sector: PARGRP=I. AGID = O, C or W. whiting is less than 50% of landing by weight. groundfish RWT is > 0.
12. Treaty Nongroundfish sector: PARGRP=I. AGID = O, C or W. groundfish (sp.mgrp) RWT is = 0.

The data set only includes catch from a PFMC area as designated in PacFIN. Research and exempted fishing permit (EFP) landings recorded in the PaFIN database were not excluded from the requested data set.

Several different groupings of groundfish and other species were developed to categorize species level records from PacFIN. These groupings are intended to reflect species and species groups that have some relevance from a regulatory

¹ All computations based on 50% of landings by weight are calculated "per landing" or "per trip" (may be more than one fish ticket) based on grouping records by agid, drvid and, tdate (agency, vessel, day).

or revenue standpoint. Tables presenting landings by fishery sector include a category “other non-FMP groundfish.” These are species assigned to the groundfish “management group” category in PacFIN but are not necessarily specified in the Pacific Council’s Groundfish FMP. Landings in this category are attributed to the following species: deepsea sole, fantail sole, Greenland turbot, hornyhead turbot, unspecified skates, unspecified turbot, walleye pollock, and yellowfin sole.

Landings and Revenue by Species and Species Groups

Table 1. Landings (commercial and tribal, at sea and shoreside) by species group (mt), 1998-2009

Year	Coastal Pelagic Species	Crab	Groundfish	Highly Migratory Species	Salmon	Shellfish	Shrimp	Other
1998	75,276.67	12,387.83	276,775.11	16,335.89	1,863.47	56.65	5,661.77	7,842.08
1999	171,378.59	16,190.52	268,694.80	11,878.39	2,740.35	44.76	14,225.07	9,634.33
2000	225,877.68	13,568.32	244,939.92	11,005.50	3,729.84	113.56	16,305.51	10,097.02
2001	196,006.85	11,857.61	205,008.70	12,726.92	3,375.18	93.09	18,646.79	9,178.65
2002	182,851.18	16,115.25	161,368.72	10,833.82	5,118.06	168.25	26,245.66	9,678.37
2003	125,389.02	34,018.88	170,881.79	17,648.80	6,038.73	108.31	14,594.30	8,017.54
2004	143,457.91	28,537.15	240,171.80	15,190.34	5,674.74	190.56	9,687.39	9,394.94
2005	157,890.77	25,097.47	287,563.99	10,051.40	4,318.47	112.69	11,403.86	8,987.14
2006	159,805.08	35,707.23	291,429.35	13,511.45	1,197.12	137.31	8,913.54	7,889.16
2007	195,044.82	20,721.11	244,157.70	12,518.56	1,456.85	147.51	11,603.99	8,719.90
2008	145,501.59	17,372.62	279,402.34	11,610.64	282.60	176.56	15,834.70	10,356.40
2009	170,851.95	23,427.63	154,886.41	13,280.95	504.74	239.52	14,951.50	9,614.84
<i>Average, 2005-2009</i>	<i>165,818.84</i>	<i>24,465.21</i>	<i>251,487.96</i>	<i>12,194.60</i>	<i>1,551.96</i>	<i>162.72</i>	<i>12,541.52</i>	<i>9,113.49</i>

Table 2. Ex-vessel revenue (commercial and tribal, at sea and shoreside) by species group in current (2009) dollars, \$1,000s, 1998-2009.

Year	Coastal Pelagic Species	Crab	Groundfish	Highly Migratory Species	Salmon	Shellfish	Shrimp	Other
1998	\$12,667	\$61,254	\$79,652	\$32,890	\$7,307	\$90	\$17,622	\$24,704
1999	\$54,235	\$86,125	\$87,240	\$29,822	\$12,212	\$62	\$25,315	\$30,490
2000	\$51,689	\$77,707	\$93,093	\$28,198	\$17,169	\$198	\$25,297	\$33,137
2001	\$39,141	\$63,956	\$72,207	\$29,291	\$12,765	\$161	\$20,249	\$28,761
2002	\$38,755	\$70,558	\$63,895	\$20,437	\$17,007	\$380	\$25,395	\$27,751
2003	\$40,841	\$136,559	\$71,164	\$32,723	\$24,401	\$157	\$13,323	\$24,592
2004	\$36,342	\$115,750	\$68,635	\$33,225	\$34,699	\$527	\$12,353	\$24,837
2005	\$46,849	\$91,265	\$77,844	\$25,081	\$26,206	\$305	\$15,293	\$22,664
2006	\$42,849	\$137,822	\$81,600	\$28,307	\$10,692	\$378	\$11,508	\$23,249
2007	\$45,972	\$107,620	\$79,294	\$25,997	\$13,076	\$369	\$15,686	\$22,359
2008	\$45,001	\$90,811	\$113,159	\$31,293	\$1,990	\$493	\$23,357	\$27,527
2009	\$72,602	\$104,168	\$73,793	\$30,166	\$2,828	\$676	\$15,028	\$25,714
<i>Average, 2005-2009</i>	<i>\$50,655</i>	<i>\$106,337</i>	<i>\$85,138</i>	<i>\$28,169</i>	<i>\$10,959</i>	<i>\$444</i>	<i>\$16,174</i>	<i>\$24,302</i>

Table 3. Groundfish landings (commercial and tribal, at sea and shoreside) by species or species group (mt), 1998-2009.

Species or group	1998	1999	2000	2001	2002	2003	2004	2005	2006	2007	2008	2009
Lingcod	347.36	355.34	144.80	155.22	204.57	164.54	177.85	204.87	262.20	272.32	288.79	234.01
P. Cod	412.10	279.32	278.42	323.09	751.33	1,249.82	1,402.65	850.75	369.13	88.51	38.24	241.83
P. Whiting	232,404.88	224,385.75	206,568.45	173,742.92	130,458.95	141,948.21	213,477.64	260,122.47	266,954.24	217,685.13	248,443.16	121,576.10
Sablefish	4,420.67	6,649.66	6,339.84	5,657.89	3,825.00	5,452.83	5,783.55	6,223.12	6,199.56	5,243.33	5,873.14	7,180.92
Pacific Ocean Perch	147.67	90.08	29.77	20.52	7.02	2.81	20.69	2.60	2.64	1.00	0.40	2.64
Shortbelly Rockfish	19.87	8.02	20.27	32.52	0.69	0.74	0.09	2.69	11.59	0.02	0.06	0.05
Widow Rockfish	4,198.78	4,105.40	4,056.86	1,967.56	428.02	41.39	75.62	189.85	207.73	237.76	233.50	173.68
Canary Rockfish	1,184.10	667.76	60.55	44.88	53.19	10.16	15.61	13.08	15.23	14.18	13.03	14.15
Chilipepper Rockfish	1,415.63	953.64	460.86	475.78	172.05	19.03	67.51	64.24	48.57	55.53	103.95	241.83
Bocaccio	236.18	111.64	31.84	35.85	26.21	8.59	16.02	9.90	5.51	7.95	8.66	6.97
Splitnose Rockfish	1,524.66	270.80	145.49	135.48	76.17	168.38	190.64	112.19	125.97	91.99	85.81	57.84
Yellowtail Rockfish	3,340.58	3,436.00	3,572.20	1,955.87	1,219.79	451.13	615.60	868.07	473.22	360.91	453.63	717.27
Sh spine Thornyhead	1,237.75	822.22	845.43	548.34	779.11	829.60	762.80	661.43	703.15	1,008.97	1,423.70	1,531.78
Longspine Thornyhead	2,238.16	1,783.57	1,479.86	1,178.01	1,890.78	1,546.27	697.25	646.16	750.40	809.26	1,256.28	1,166.17
Other Thornyheads	48.90	38.87	70.03	47.59	56.31	39.67	25.85	9.88	4.32	4.24	1.97	2.14
Cowcod	18.57	11.75	1.22	0.77	0.09	0.03	0.02	0.04		0.39		0.06
Darkblotched Rockfish	947.19	360.20	260.66	172.40	112.31	83.89	189.71	97.22	106.25	143.08	116.02	137.58
Yelloweye Rockfish	65.75	91.87	11.22	10.53	3.48	1.42	1.64	1.53	1.33	2.33	1.55	0.87
Black Rockfish	291.34	177.11	153.67	245.66	220.36	173.73	185.21	172.93	156.32	185.13	180.96	224.01
Nearshore Rockfish	349.97	274.28	189.33	197.85	155.28	88.90	103.89	111.00	110.66	113.99	130.59	103.43
Shelf Rockfish	849.41	297.79	91.10	113.85	84.69	37.75	43.84	52.13	50.01	41.26	34.39	32.37
Slope Rockfish	1,287.59	423.29	583.09	457.12	610.65	515.31	558.66	380.81	346.44	348.05	436.42	458.61
Other Rockfish	749.43	461.89	66.56	21.81	2.80	2.21	4.23	3.62	4.37	13.66	1.09	1.07
Pacific Ocean Perch	496.33	408.61	112.93	243.16	143.56	130.51	100.07	59.68	68.92	130.39	90.33	92.62
Ca Scorpionfish	50.35	38.08	17.75	19.02	12.84	5.06	4.41	4.89	2.39	3.32	3.43	3.34
Cabazon	201.91	149.74	145.87	118.01	95.48	65.97	76.65	59.18	49.38	46.61	47.43	47.30
Dover Sole	8,022.16	9,140.41	8,781.02	6,891.69	6,301.06	7,355.82	6,745.46	6,901.96	5,967.30	9,278.76	11,217.81	11,750.38
English Sole	1,138.57	911.34	769.11	992.72	1,175.20	930.27	952.23	928.24	925.71	689.19	362.43	357.06
Petrale Sole	1,460.83	1,496.36	1,892.50	1,844.46	1,796.26	2,068.80	1,961.57	2,733.35	2,609.73	2,252.27	2,219.24	1,765.53
Arrowtooth Flounder	3,169.03	5,290.12	3,286.25	2,467.60	2,089.79	2,330.57	2,329.91	2,242.87	1,920.81	2,264.19	2,673.26	3,846.32
Starry Flounder	52.98	22.14	25.24	7.20	18.58	41.12	79.85	53.46	66.70	21.04	13.03	20.31
Other Flatfish	1,643.66	1,988.92	1,600.99	1,724.92	1,715.44	1,538.54	1,313.02	1,183.37	1,145.80	949.27	796.67	949.18
Kelp Greenling	16.18	37.49	40.80	38.06	60.64	24.78	24.72	22.01	15.47	19.21	22.52	21.10
Spiny Dogfish	780.87	983.15	767.28	797.05	1,175.00	719.36	1,033.49	823.39	486.17	579.98	1,308.92	426.40
California Halibut	545.71	604.09	390.70	414.00	433.47	380.60	457.09	421.04	326.21	178.40	217.09	284.00
Longnose Skate	0.01	0.11					0.46	0.64	0.11	0.77	0.11	804.82
Other Groundfish	2,005.69	2,100.51	2,021.46	1,691.17	1,080.24	1,616.88	910.70	1,120.21	1,260.66	1,192.59	1,521.80	682.55

Table 4. Groundfish ex-vessel revenue (commercial and tribal, at sea and shoreside) by species or species group in current (2009) dollars, \$1,000s, 1998-2009.

Species or Group	1998	1999	2000	2001	2002	2003	2004	2005	2006	2007	2008	2009
Lingcod	\$730	\$791	\$427	\$467	\$617	\$479	\$490	\$501	\$608	\$682	\$743	\$601
P. Cod	\$510	\$333	\$357	\$432	\$998	\$1,656	\$1,608	\$947	\$429	\$111	\$55	\$253
P. Whiting	\$17,288	\$23,101	\$25,934	\$16,827	\$17,452	\$20,613	\$24,279	\$31,057	\$34,285	\$33,043	\$57,881	\$14,165
Sablefish	\$14,535	\$21,503	\$25,051	\$21,173	\$13,927	\$21,283	\$18,954	\$22,000	\$24,065	\$21,327	\$27,316	\$34,252
Pacific Ocean Perch	\$159	\$100	\$34	\$24	\$8	\$3	\$23	\$3	\$3	\$1	\$0	\$3
Shortbelly Rockfish	\$12	\$2	\$9	\$28	\$0	\$1	\$0	\$3	\$0	\$0	\$0	\$0
Widow Rockfish	\$4,150	\$4,281	\$4,713	\$2,197	\$417	\$46	\$75	\$135	\$124	\$161	\$154	\$140
Canary Rockfish	\$1,784	\$1,016	\$113	\$84	\$65	\$13	\$17	\$15	\$18	\$22	\$12	\$14
Chilipepper Rockfish	\$1,675	\$1,207	\$738	\$695	\$232	\$22	\$82	\$76	\$66	\$99	\$191	\$330
Bocaccio	\$318	\$165	\$57	\$62	\$42	\$11	\$32	\$22	\$18	\$22	\$21	\$17
Splitnose Rockfish	\$1,080	\$205	\$142	\$116	\$71	\$129	\$164	\$93	\$89	\$83	\$75	\$50
Yellowtail Rockfish	\$3,139	\$2,866	\$3,869	\$2,263	\$1,457	\$538	\$692	\$907	\$461	\$296	\$424	\$751
Shortspine Thornyhead	\$2,919	\$2,549	\$2,548	\$1,643	\$2,629	\$2,617	\$2,168	\$2,103	\$2,327	\$2,643	\$3,542	\$3,323
Longspine Thornyhead	\$4,034	\$3,759	\$3,758	\$2,985	\$4,265	\$2,568	\$845	\$780	\$1,060	\$972	\$1,290	\$887
Other Thornyheads	\$211	\$99	\$244	\$257	\$157	\$63	\$180	\$26	\$22	\$25	\$16	\$7
Cowcod	\$33	\$23	\$4	\$1	\$0	\$0	\$0	\$0	\$0	\$1	\$0	\$1
Darkblotched Rockfish	\$1,006	\$354	\$299	\$196	\$127	\$93	\$218	\$102	\$111	\$157	\$135	\$159
Yelloweye Rockfish	\$175	\$292	\$45	\$52	\$7	\$3	\$4	\$4	\$3	\$8	\$4	\$2
Black Rockfish	\$406	\$316	\$378	\$581	\$647	\$558	\$604	\$590	\$622	\$768	\$755	\$910
Nearshore Rockfish	\$2,169	\$2,247	\$2,305	\$2,387	\$1,930	\$1,170	\$1,396	\$1,457	\$1,506	\$1,652	\$1,764	\$1,461
Shelf Rockfish	\$1,413	\$588	\$292	\$256	\$176	\$89	\$165	\$167	\$181	\$183	\$159	\$137
Slope Rockfish	\$1,688	\$484	\$815	\$678	\$947	\$903	\$856	\$518	\$525	\$475	\$689	\$699
Other Rockfish	\$1,030	\$740	\$97	\$62	\$15	\$7	\$13	\$8	\$15	\$43	\$6	\$5
Pacific Ocean Perch	\$520	\$420	\$128	\$262	\$166	\$144	\$115	\$67	\$74	\$122	\$93	\$81
California Scorpionfish	\$244	\$257	\$127	\$148	\$91	\$37	\$36	\$36	\$19	\$26	\$26	\$30
Cabezon	\$1,700	\$1,407	\$1,616	\$1,207	\$965	\$711	\$797	\$611	\$538	\$505	\$504	\$455
Dover Sole	\$7,704	\$8,351	\$8,439	\$6,629	\$5,992	\$6,888	\$6,048	\$6,035	\$5,125	\$7,853	\$9,274	\$8,635
English Sole	\$1,125	\$851	\$743	\$959	\$1,076	\$830	\$815	\$727	\$693	\$503	\$267	\$246
Petrale Sole	\$3,898	\$3,955	\$5,210	\$4,920	\$4,300	\$5,231	\$4,908	\$5,981	\$6,100	\$5,095	\$4,993	\$3,547
Arrowtooth Flounder	\$915	\$1,447	\$1,037	\$784	\$592	\$647	\$628	\$564	\$481	\$513	\$590	\$831
Starry Flounder	\$57	\$23	\$27	\$8	\$22	\$51	\$96	\$75	\$72	\$24	\$15	\$24
Other Flatfish	\$1,647	\$1,954	\$1,778	\$2,019	\$1,996	\$1,768	\$1,385	\$1,208	\$1,073	\$829	\$691	\$804
Kelp Greenling	\$139	\$385	\$467	\$406	\$535	\$266	\$266	\$251	\$180	\$206	\$259	\$224
Spiny Dogfish	\$191	\$280	\$314	\$266	\$412	\$222	\$220	\$242	\$212	\$209	\$329	\$129
California Halibut	\$3,595	\$4,146	\$3,014	\$3,256	\$3,366	\$2,909	\$3,500	\$3,115	\$2,868	\$1,898	\$2,325	\$2,562
Longnose Skate	\$0	\$0	\$0	\$0	\$0	\$0	\$0	\$0	\$0	\$0	\$0	\$333
Other Groundfish	\$1,047	\$866	\$977	\$878	\$469	\$764	\$381	\$464	\$496	\$633	\$889	\$285

Table 5. Groundfish landings (commercial and tribal, at sea and shoreside) by gear type (mt), 1998-2009.

Year	Dredge	Hook and Line	Net	Pot/Trap	Troll	Trawl	Shrimp Trawl	Miscellaneous	Total
1998		4,642.66	385.30	544.42	276.77	270,541.92	382.09	1.95	276,775.11
1999		4,621.75	137.98	820.10	91.76	262,600.33	422.63	0.25	268,694.80
2000		4,101.06	92.09	936.90	33.32	239,464.55	311.02	0.98	244,939.92
2001		3,676.72	85.26	732.46	35.11	200,238.32	240.39	0.44	205,008.70
2002	0.63	3,182.33	72.18	519.16	23.08	157,480.04	88.37	2.93	161,368.09
2003		3,494.79	79.15	840.91	23.46	166,411.75	31.11	0.62	170,881.79
2004	-	3,691.94	64.55	849.56	38.47	235,498.86	26.78	1.64	240,171.80
2005		3,920.69	55.69	1,022.25	41.27	282,506.12	15.58	2.39	287,563.99
2006		3,651.48	62.49	1,077.83	38.77	286,579.64	19.07	0.07	291,429.35
2007		3,144.88	46.36	712.94	22.45	240,206.16	24.27	0.64	244,157.70
2008		3,575.11	33.47	702.88	14.64	275,061.79	14.34	0.11	279,402.34
2009		4,355.39	12.40	890.16	13.14	149,598.73	16.22	0.37	154,886.41
<i>Average, 2005-2009</i>	-	<i>3,729.51</i>	<i>42.08</i>	<i>881.21</i>	<i>26.05</i>	<i>246,790.49</i>	<i>17.90</i>	<i>0.72</i>	<i>251,487.96</i>

Table 6. Groundfish ex-vessel revenue (commercial and tribal, at sea and shoreside) by gear type in current (2009) dollars, \$1,000s, 1998-2009.

Year	Dredge	Hook and Line	Net	Pot/Trap	Troll	Trawl	Shrimp Trawl	Miscellaneous	Total
1998	\$-	\$14,633	\$548	\$2,277	\$389	\$61,260	\$542	\$2	\$79,652
1999	\$-	\$17,615	\$223	\$3,426	\$153	\$65,238	\$583	\$2	\$87,240
2000	\$-	\$18,418	\$146	\$4,894	\$81	\$68,963	\$581	\$9	\$93,093
2001	\$-	\$16,200	\$152	\$3,453	\$73	\$51,965	\$357	\$6	\$72,207
2002	\$2	\$13,162	\$126	\$2,535	\$54	\$47,819	\$168	\$30	\$63,895
2003	\$-	\$15,194	\$130	\$4,083	\$51	\$51,617	\$79	\$10	\$71,164
2004	\$0	\$15,008	\$139	\$3,311	\$73	\$50,033	\$67	\$3	\$68,635
2005	\$-	\$16,531	\$91	\$4,096	\$83	\$56,972	\$65	\$7	\$77,844
2006	\$-	\$16,729	\$122	\$4,724	\$75	\$59,893	\$56	\$1	\$81,600
2007	\$-	\$15,293	\$102	\$3,197	\$67	\$60,578	\$48	\$9	\$79,294
2008	\$-	\$18,090	\$57	\$3,778	\$34	\$91,173	\$24	\$3	\$113,159
2009	\$-	\$22,794	\$14	\$4,718	\$18	\$46,224	\$23	\$3	\$73,793
<i>Average, 2005-2009</i>	<i>\$-</i>	<i>\$17,887</i>	<i>\$77</i>	<i>\$4,103</i>	<i>\$55</i>	<i>\$62,968</i>	<i>\$43</i>	<i>\$4</i>	<i>\$85,138</i>

Landing and Revenue by Nonwhiting Fishery Sectors

Table 7. Nonwhiting limited entry trawl landings by groundfish species or species group (mt), 2005-2009.

Species / Group	2005	2006	2007	2008	2009	Average
Lingcod	75.42	118.00	119.91	107.52	108.12	105.79
P. Cod	723.39	330.31	43.08	11.46	91.02	239.85
P. Whiting	18.77	2.57	3.28	0.50	0.34	5.09
Sablefish	2,317.59	2,468.73	2,429.99	2,873.16	3,009.75	2,619.84
Rockfish	507.78	524.78	577.98	602.10	749.43	592.41
Thornyheads	1,135.75	1,261.87	1,604.97	2,438.80	2,458.16	1,779.91
Arrowtooth Flounder	2,075.08	1,714.20	2,025.04	2,634.39	3,822.88	2,454.32
Dover Sole	6,753.57	5,743.74	8,955.96	10,976.68	11,611.69	8,808.33
English Sole	859.26	867.74	621.51	326.03	264.60	587.83
Petrale Sole	2,701.47	2,581.68	2,206.95	2,174.46	1,694.67	2,271.85
Other Flatfish	1,106.27	1,098.50	883.64	740.37	887.88	943.33
Cabezon	0.09	0.03	0.02	0.02	0.02	0.04
Spiny Dogfish	126.32	85.03	56.88	68.78	87.32	84.87
Other Groundfish	98.40	92.86	92.03	66.79	893.96	248.81
Other Non-FMP Groundfish	901.32	1,023.27	941.89	1,286.15	468.24	924.17

Table 8. Nonwhiting limited entry trawl ex-vessel revenue by groundfish species or species group in current (2009) dollars, \$1,000s, 2005-2009.

Species / Group	2005	2006	2007	2008	2009	Average
Lingcod	\$116	\$179	\$206	\$169	\$175	\$169
P. Cod	\$809	\$381	\$54	\$15	\$94	\$270
P. Whiting	\$2	\$0	\$0	\$1	\$0	\$1
Sablefish	\$6,134	\$7,553	\$8,097	\$11,448	\$12,433	\$9,133
Rockfish	\$550	\$568	\$716	\$819	\$929	\$716
Thornyheads	\$1,666	\$2,052	\$2,187	\$3,149	\$2,588	\$2,328
Arrowtooth Flounder	\$522	\$437	\$460	\$583	\$826	\$566
Dover Sole	\$5,909	\$4,933	\$7,580	\$9,069	\$8,524	\$7,203
English Sole	\$668	\$646	\$448	\$238	\$177	\$435
Petrale Sole	\$5,903	\$6,031	\$4,984	\$4,883	\$3,375	\$5,035
Other Flatfish	\$1,074	\$968	\$740	\$619	\$733	\$827
Cabezon	\$0	\$0	\$0	\$0	\$0	\$0
Spiny Dogfish	\$61	\$35	\$27	\$58	\$73	\$51
Other Groundfish	\$34	\$26	\$27	\$22	\$357	\$93
Other Non-FMP Groundfish	\$326	\$362	\$498	\$767	\$192	\$429

Table 9. Limited entry fixed gear landings by groundfish species or species group (mt), 2005-2009.

Species / Group	2005	2006	2007	2008	2009	Average
Lingcod	14.46	17.39	14.7	20.77	15.82	16.63
P. Cod	1.92	0.27	0.05	0.05	1.15	0.69
P. Whiting	0.5	0.23	0.57	0.17	0.37	0.37
Sablefish	2,222.27	2,210.21	1,780.95	1,844.8	2,412.69	2,094.18
Rockfish	115.22	136.68	112.97	131.28	171.57	133.54
Thornyheads	161.29	172.29	173.93	199.41	199.3	181.24
Arrowtooth Flounder	3.24	2.54	2.81	3.44	4.37	3.28
Dover Sole	2.21	1.22	0.95	1.55	2.6	1.71
English Sole		0				-
Petrale Sole	0.28	0.17	0.14	0.3	0.08	0.19
Other Flatfish	0.37	0.01	0.18	1.27	0.49	0.46
Cabezon	1.87	1.84	3.93	8.98	7.11	4.75
Spiny Dogfish	229.82	131.04	195.95	180.87	23.79	152.29
Other Groundfish	28.91	22	29.93	39.42	25.76	29.20
Other Non-FMP Groundfish	14.73	15.39	17.3	28.36	26.14	20.38

Table 10. Limited entry fixed gear ex-vessel revenue by groundfish species or species group in current (2009) dollars, \$1,000s, 2005-2009.

Species / Group	2005	2006	2007	2008	2009	Average
Lingcod	\$32	\$42	\$42	\$61	\$46	\$44
P. Cod	\$2	\$0	\$0	\$0	\$1	\$1
P. Whiting	\$3	\$1	\$2	\$2	\$0	\$2
Sablefish	\$9,800	\$10,519	\$8,732	\$10,159	\$13,454	\$10,533
Rockfish	\$268	\$329	\$324	\$404	\$405	\$346
Thornyheads	\$1,201	\$1,308	\$1,373	\$1,622	\$1,525	\$1,406
Arrowtooth Flounder	\$1	\$1	\$1	\$1	\$1	\$1
Dover Sole	\$2	\$1	\$1	\$2	\$3	\$2
English Sole	\$-	\$0	\$-	\$-	\$-	\$0
Petrale Sole	\$1	\$0	\$0	\$1	\$0	\$0
Other Flatfish	\$1	\$0	\$0	\$5	\$3	\$2
Cabezon	\$16	\$15	\$29	\$60	\$48	\$34
Spiny Dogfish	\$125	\$71	\$109	\$90	\$9	\$81
Other Groundfish	\$31	\$24	\$34	\$40	\$36	\$33
Other Non-FMP Groundfish	\$6	\$5	\$7	\$13	\$12	\$9

Table 11. Open access fixed gear gear landings by groundfish species or species group (mt), 2005-2009.

Species / Group	2005	2006	2007	2008	2009	Average
Lingcod	66.27	65.29	69.28	75.07	56.99	66.58
P. Cod	0.50	0.11	-	0.02	0.04	0.13
P. Whiting			-	-	-	-
Sablefish	902.59	796.36	460.89	602.06	1,043.86	761.15
Rockfish	318.25	303.76	325.74	331.00	371.94	330.14
Thornyheads	1.18	1.83	1.34	1.07	6.73	2.43
Arrowtooth Flounder	0.35	0.48	0.38	2.09	1.15	0.89
Dover Sole	0.26	0.38	1.17	0.51	0.65	0.59
English Sole				0.01		0.01
Petrale Sole	-	0.11	0.02	0.03	0.01	0.03
Other Flatfish	1.45	2.16	2.43	2.01	1.72	1.95
Cabazon	56.39	45.89	41.39	37.29	39.31	44.05
Spiny Dogfish	3.34	60.04	1.77	11.12	5.07	16.27
Other Groundfish	61.22	31.01	30.96	43.27	28.50	38.99
Other Non-FMP Groundfish	5.43	5.11	3.61	10.18	3.46	5.56

Table 12. Open access fixed gear ex-vessel revenue by groundfish species or species group in current (2009) dollars, \$1,000s, 2005-2009.

Species / Group	2005	2006	2007	2008	2009	Average
Lingcod	\$264	\$275	\$299	\$354	\$278	\$294
P. Cod	\$1	\$0	\$0	\$0	\$0	\$0
P. Whiting	\$-	\$-	\$0	\$0	\$0	\$0
Sablefish	\$3,160	\$3,007	\$1,787	\$2,771	\$4,640	\$3,073
Rockfish	\$2,143	\$2,244	\$2,484	\$2,535	\$2,471	\$2,375
Thornyheads	\$9	\$15	\$10	\$11	\$53	\$20
Arrowtooth Flounder	\$0	\$0	\$0	\$1	\$0	\$0
Dover Sole	\$1	\$1	\$5	\$1	\$1	\$2
English Sole	\$-	\$-	\$-	\$0	\$-	\$0
Petrale Sole	\$0	\$0	\$0	\$0	\$0	\$0
Other Flatfish	\$6	\$16	\$18	\$14	\$10	\$13
Cabazon	\$584	\$503	\$460	\$427	\$394	\$473
Spiny Dogfish	\$2	\$33	\$2	\$5	\$2	\$9
Other Groundfish	\$264	\$183	\$201	\$252	\$208	\$222
Other Non-FMP Groundfish	\$2	\$2	\$2	\$6	\$2	\$3

Table 13. Incidentally caught groundfish landings by groundfish species or species group, including by exempted trawl gear (mt), 2005-2009.

Species / Group	2005	2006	2007	2008	2009	Average
Lingcod	9.73	7.82	9.89	5.02	2.99	7.09
P. Cod	0.07	2.02	0.02	0.03	1.96	0.82
P. Whiting	52.94	0.31	2.86	27.26	0	16.67
Sablefish	43.53	42.26	43.15	24.02	25.72	35.74
Rockfish	35.71	30.78	23.39	8.53	7.64	21.21
Thornyheads	1.06	0.08	0.85	0.08	4.54	1.32
Arrowtooth Flounder	1.72	1.69	5.24	0.42	1.22	2.06
Dover Sole	0.63	0.62	17.16	0.12	4.75	4.66
English Sole	3.03	16.05	1.11	0.82	0.93	4.39
Petrale Sole	1.98	1.45	0.21	0.48	1.37	1.10
Other Flatfish	68.6	49.63	33.46	20.19	32.94	40.96
Cabazon	0.83	1.62	1.27	1.14	0.86	1.14
Spiny Dogfish	7.46	38.5	0.21	14.96	1.29	12.48
Other Groundfish	34.25	33.64	25.31	9.37	7.07	21.93
Other Non-FMP Groundfish	10.68	11.24	13.07	9.24	10.02	10.85

Table 14. Incidentally caught groundfish ex-vessel revenue by groundfish species or species group, current (2009) dollars, \$1,000s, 2005-2009.

Species / Group	2005	2006	2007	2008	2009	Average
Lingcod	\$34	\$28	\$42	\$23	\$13	\$28
P. Cod	\$0	\$2	\$0	\$0	\$2	\$1
P. Whiting	\$6	\$0	\$1	\$5	\$-	\$3
Sablefish	\$182	\$196	\$191	\$126	\$142	\$168
Rockfish	\$128	\$110	\$107	\$60	\$47	\$90
Thornyheads	\$6	\$0	\$2	\$0	\$8	\$3
Arrowtooth Flounder	\$1	\$1	\$1	\$0	\$0	\$1
Dover Sole	\$1	\$1	\$16	\$0	\$4	\$4
English Sole	\$8	\$15	\$5	\$2	\$1	\$6
Petrale Sole	\$6	\$4	\$1	\$1	\$4	\$3
Other Flatfish	\$150	\$115	\$55	\$32	\$50	\$80
Cabazon	\$12	\$21	\$16	\$17	\$12	\$15
Spiny Dogfish	\$4	\$29	\$0	\$12	\$0	\$9
Other Groundfish	\$49	\$54	\$41	\$16	\$11	\$34
Other Non-FMP Groundfish	\$8	\$7	\$9	\$8	\$6	\$8

Table 15. Treaty nonwhiting groundfish sector landings (mt), 2005-2009.

Species / Group	2005	2006	2007	2008	2009	Average
Lingcod	29.79	44.22	46.34	67.66	44.86	46.57
P. Cod	123.7	35.51	45.35	26.44	147.07	75.61
Sablefish	699.67	668.56	516.3	526.25	639.55	610.07
Rockfish	594.44	190.26	64.51	228.28	529.52	321.40
Thornyheads	10.88	21.24	38.35	36.06	30.69	27.44
Arrowtooth Flounder	158.03	194.44	223.35	19.96	8.32	120.82
Dover Sole	144.91	221.29	303.36	238.19	130.53	207.66
English Sole	65.89	41.92	66.52	35.57	91.36	60.25
Petrale Sole	29.61	26.27	44.93	43.97	69.4	42.84
Other Flatfish	48.03	59.69	48.91	43.08	45.36	49.01
Spiny Dogfish	2.79		25.42	89.06	25.73	35.75
Other Non-FMP Groundfish	34.28	39.04	57.1	52.74	44.92	45.62

Table 16. Treaty nonwhiting groundfish sector ex-vessel revenue by groundfish species or species group, current (2009) dollars, \$1,000s, 2005-2009.

Species / Group	2005	2006	2007	2008	2009	Average
Lingcod	\$48	\$76	\$84	\$125	\$85	\$84
P. Cod	\$134	\$44	\$56	\$40	\$157	\$86
Sablefish	\$2,657	\$2,764	\$2,497	\$2,805	\$3,576	\$2,860
Rockfish	\$678	\$213	\$73	\$277	\$632	\$375
Thornyheads	\$17	\$33	\$66	\$58	\$43	\$44
Arrowtooth Flounder	\$39	\$41	\$50	\$4	\$1	\$27
Dover Sole	\$122	\$188	\$251	\$201	\$103	\$173
English Sole	\$51	\$32	\$50	\$27	\$68	\$46
Petrale Sole	\$72	\$65	\$109	\$107	\$168	\$104
Other Flatfish	\$41	\$45	\$38	\$34	\$31	\$38
Spiny Dogfish	\$1	\$-	\$12	\$37	\$10	\$12
Other Non-FMP Groundfish	\$11	\$13	\$21	\$26	\$19	\$18

Table 17. Groundfish landings (mt) by nonwhiting sector, 2005-2009.

Sector	2005	2006	2007	2008	2009
Shoreside nonwhiting trawl sector	19,400.48	17,913.31	20,563.13	24,307.21	26,148.08
Limited entry fixed sector	2,797.09	2,711.28	2,334.36	2,460.67	2,891.24
Open access fixed gear sector	1,417.23	1,312.53	938.98	1,115.73	1,559.43
Incidentally caught groundfish, including with exempted trawl	272.22	237.71	177.20	121.68	103.30
Treaty Shoreside nonwhiting groundfish sector	1,942.02	1,542.44	1,480.44	1,407.26	1,807.31

Table 18. Ex-vessel revenue from groundfish by nonwhiting sector in current (2009) dollars, \$1,000s, 2005-2009

Sector	2005	2006	2007	2008	2009	Average
Shoreside nonwhiting trawl sector	\$23,773	\$24,170	\$26,025	\$31,839	\$30,475	\$27,256
Limited entry fixed sector	\$11,488	\$12,317	\$10,654	\$12,460	\$15,544	\$12,492
Open access fixed gear sector	\$6,435	\$6,279	\$5,267	\$6,376	\$8,060	\$6,483
Incidentally caught groundfish, including with exempted trawl	\$595	\$583	\$489	\$304	\$301	\$455
Treaty Shoreside nonwhiting groundfish sector	\$3,873	\$3,516	\$3,307	\$3,740	\$4,893	\$3,866

Landings and Revenue by Whiting Sectors

Table 19. Landings of Pacific whiting (mt) by whiting sectors, 1998-2009.

Year	Catcher-Processor Sector	Mothership Sector	Shoreside Whiting Sector	Treaty Mothership Sector	Treaty Shoreside Whiting Sector
1998	70,372.98	49,666.87	87,708.70	24,507.90	
1999	67,672.40	47,405.34	83,444.82	25,836.82	
2000	67,803.75	46,657.51	85,818.78	6,252.38	
2001	58,628.13	35,622.42	73,386.75	6,080.01	
2002	36,341.82	26,593.56	45,503.91	21,815.53	
2003	41,214.79	26,021.76	51,182.71	19,376.23	4,078.88
2004	69,411.65	24,102.20	89,641.00	23,459.44	6,848.30
2005	78,890.25	48,596.74	97,558.87	23,582.09	11,422.31
2006	78,864.74	55,355.20	97,266.92	5,568.00	29,896.27
2007	73,265.69	47,810.53	73,277.15	5,167.00	18,158.05
2008	108,240.47	57,497.87	50,760.35	14,944.48	16,972.06
2009	34,800.68	24,091.44	40,293.88	13,460.53	8,928.86

Table 20. Ex-vessel revenue, current (2009) dollars, \$1,000s, from Pacific whiting by whiting sectors, 1998-2009.

Year	Catcher-Processor Sector	Mothership Sector	Shoreside Whiting Sector	Treaty Mothership Sector	Treaty Shoreside Whiting Sector
1998	\$5,082	\$4,242	\$6,072	\$1,868	-
1999	\$6,773	\$4,426	\$8,613	\$3,283	-
2000	\$8,036	\$7,413	\$9,791	\$688	-
2001	\$6,080	\$3,176	\$6,920	\$647	-
2002	\$5,749	\$3,739	\$5,367	\$2,569	-
2003	\$6,264	\$5,731	\$5,887	\$2,228	\$490
2004	\$10,914	\$2,972	\$7,894	\$1,990	\$506
2005	\$9,343	\$5,641	\$11,805	\$2,924	\$1,331
2006	\$9,985	\$6,793	\$13,227	\$735	\$3,544
2007	\$10,856	\$6,984	\$11,630	\$822	\$2,749
2008	\$24,056	\$15,174	\$11,659	\$3,383	\$3,600
2009	\$3,947	\$2,673	\$5,306	\$1,230	\$1,007

Table 21. Landings of nonwhiting species (mt) by whiting sectors, 2008-2009.

Species/ Group	Whiting catcher processors sector		Whiting mothership sector		Shoreside whiting sector		Treaty mothership whiting sector		Treaty shoreside whiting sector	
	2008	2009	2008	2009	2008	2009	2008	2009	2008	2009
Lingcod	0.58	0.01	2.96	0.6	3.27	0.78	2.02	1.88	3.92	1.96
P. Cod	0		0.05		0.18	0	0.01	0.51	0	0.08
Sablefish	1.3	0.17	0.35	0.01	0.17	49.14	0.76	0.02	0.27	0.01
Rockfish	217.12	19.88	133.02	189.42	150.73	210.59	41.71	10.01	50.05	8.39
Thornyheads	5.69	0.43	0.17		0.13	0.12	0	0.12	0.54	0
Flatfish	4.1	0.38	1.28	1.41	1.55	3.83	2.01	1.5	5.26	2.24
Other Groundfish	489.4	28.28	24.22	6.88	59.12	20.82	158.57	128.24	213.75	99.67
Other Non-FMP Groundfish			0		0.25	0.13			0.05	14.15

Table 22. Ex-vessel revenue from nonwhiting species by whiting sectors, \$1,000s, 2008-2009.

Species / Group	Whiting catcher processors sector		Whiting mothership sector		Shoreside whiting sector		Treaty mothership whiting sector		Treaty shoreside whiting sector	
	2008	2009	2008	2009	2008	2009	2008	2009	2008	2009
Lingcod	\$1	\$0	\$2	\$1	\$2	\$1	-	\$0	\$6	\$3
P. Cod	\$0	-	\$0	-	\$0	\$0	-	-	\$0	\$0
Sablefish	\$5	\$1	\$1	\$0	\$0	\$7	\$0	\$0	\$1	\$0
Rockfish	\$153	\$11	\$61	\$134	\$102	\$143	\$48	\$11	\$46	\$7
Thornyheads	\$7	\$0	\$0	-	\$0	\$0	\$0	\$0	\$1	\$0
Flatfish	\$1	\$0	\$0	\$0	\$0	\$1	-	-	\$1	\$1
Other Groundfish	\$37	\$0	\$2	\$1	\$3	\$1	-	-	\$85	\$33
Other Non-FMP Groundfish	-	-	-	-	\$0	\$0	-	-	\$0	\$2

Landings and Revenue by Month

Table 23. Average landings (mt) per 2-month period by nonwhiting sectors, 2005-2009.

Sector	Jan-Feb.	Mar-Apr	May-Jun	Jul-Aug	Sep-Oct	Nov-Dec
Shoreside Nonwhiting Trawl	3,637.56	3,672.64	3,918.69	3,988.75	3,788.83	2,659.96
Limited Entry Fixed Gear	101.90	261.88	678.20	759.48	718.41	119.06
Open Access Fixed Gear	101.82	142.69	266.89	280.65	289.08	187.65
Incidentally Caught	25.58	23.40	37.23	48.43	37.08	10.70
Treaty Shoreside Nonwhiting Groundfish	68.71	427.75	362.38	304.72	299.57	172.77

Table 24. Average ex-vessel revenue per 2-month period by nonwhiting sectors, \$1,000s, 2005-2009.

Sector	Jan-Feb	Mar-Apr	May-Jun	Jul-Aug	Sep-Oct	Nov-Dec
Shoreside Nonwhiting Trawl	\$4,507	\$3,962	\$4,621	\$5,006	\$4,771	\$3,587
Limited Entry Fixed Gear	\$401	\$1,018	\$3,084	\$3,634	\$3,394	\$582
Open Access Fixed Gear	\$531	\$553	\$1,423	\$1,480	\$1,449	\$846
Incidentally Caught	\$55	\$40	\$111	\$149	\$52	\$29
Treaty Shoreside Nonwhiting Groundfish	\$69	\$1,289	\$732	\$532	\$743	\$380

Table 25. Average landings monthly landings (mt) by whiting sectors, 2005-2009.

Sector	April	May	June	July	August	September	October	November	December
Whiting catcher processors	0.00	18,987.99	15,392.85	4,662.40	4,918.70	7,845.93	10,607.70	8,545.44	4,107.07
Whiting motherships	0.00	24,322.48	12,601.96	1,639.67	2,986.31	969.75	2,468.55	1,844.66	0.00
Shoreside whiting	927.73	2,735.87	21,008.15	31,134.92	12,215.49	0.00	3,358.61	602.78	198.32
Treaty mothership	0.00	0.00	2,559.13	2,685.69	752.60	1,276.05	3,025.17	1,869.00	630.04
Treaty shoreside whiting	0.00	531.87	1,226.55	1,255.41	2,674.95	4,670.91	4,232.49	1,865.96	756.34

Table 26. Average monthly ex-vessel revenue by whiting sectors, \$1,000s, 2005-2009.

Sector	April	May	June	July	August	September	October	November	December
Whiting catcher processors	-	\$2,556	\$2,627	\$577	\$837	\$919	\$1,855	\$1,386	\$626
Whiting motherships	-	\$3,222	\$2,148	\$518	\$579	\$112	\$463	\$272	-
Shoreside whiting	\$109	\$428	\$2,862	\$4,157	\$2,069	-	\$763	\$119	\$35
Treaty mothership	-	-	\$284	\$331	\$89	\$300	\$510	\$261	\$22
Treaty shoreside whiting	-	\$61	\$125	\$158	\$367	\$710	\$648	\$266	\$105

Table 27. Average groundfish landings (mt) per 2-month period by species or species group, all sectors, including tribal, 2005-2009.

	Jan-Feb	Mar-Apr	May-Jun	Jul-Aug	Sep-Oct	Nov-Dec
Lingcod	14.45	18.10	71.04	73.38	54.89	20.57
P. Cod	22.83	39.79	135.10	87.46	20.32	12.20
P. Whiting	0.09	923.36	98,818.93	64,653.76	38,376.57	20,183.51
Sablefish	367.32	889.46	1,293.33	1,473.53	1,453.19	667.18
Rockfish	170.23	211.78	612.73	436.84	329.84	197.93
Thornyheads	273.60	310.88	383.70	349.61	411.67	266.51
Arrowtooth Flounder	363.94	478.19	570.60	544.47	391.93	240.36
Dover Sole	1,383.32	1,887.43	1,457.09	1,426.15	1,641.30	1,227.95
English Sole	97.37	63.63	137.10	186.05	126.45	41.93
Petrale Sole	876.71	233.86	322.19	356.28	235.03	291.96
Other Flatfish	119.49	121.87	230.20	292.45	193.99	78.92
Cabazon	6.94	4.00	13.85	10.35	11.85	2.98
Spiny Dogfish	47.65	84.78	174.75	87.03	108.23	222.53
Other Groundfish	21.84	68.08	74.40	81.98	66.46	28.07
Other Non-FMP Groundfish	169.80	120.86	335.23	248.81	166.42	87.16

Table 28. Average groundfish ex-vessel revenue, \$1,000s, per 2-month period by species or species group, all sectors, including tribal, 2005-2009.

	Jan-Feb	Mar-Apr	May-Jun	Jul-Aug	Sep-Oct	Nov-Dec
Lingcod	\$22	\$31	\$184	\$179	\$148	\$44
P. Cod	\$25	\$44	\$142	\$92	\$23	\$13
P. Whiting	\$0	\$105	\$14,080	\$9,521	\$6,242	\$3,045
Sablefish	\$1,255	\$3,431	\$5,399	\$6,236	\$6,196	\$2,533
Rockfish	\$418	\$365	\$1,061	\$1,011	\$850	\$452
Thornyheads	\$540	\$552	\$678	\$647	\$730	\$551
Arrowtooth Flounder	\$82	\$107	\$126	\$124	\$87	\$53
Dover Sole	\$1,103	\$1,485	\$1,169	\$1,161	\$1,319	\$946
English Sole	\$70	\$48	\$97	\$131	\$89	\$31
Petrale Sole	\$1,708	\$497	\$746	\$819	\$543	\$641
Other Flatfish	\$110	\$108	\$209	\$261	\$167	\$68
Cabazon	\$78	\$31	\$145	\$101	\$119	\$31
Spiny Dogfish	\$24	\$43	\$59	\$19	\$38	\$33
Other Groundfish	\$48	\$66	\$84	\$80	\$65	\$28
Other Non-FMP Groundfish	\$80	\$56	\$105	\$101	\$74	\$48

Landings and Revenue by Port

Table 29. Landings by species or species group (mt) by port group in Washington and Oregon, 2008.

	Puget Sound	North Washington Coast	South & Central WA Coast	Washington Total	Astoria	Tillamook	Newport	Coos Bay	Brookings	Oregon Total
Lingcod	4.4	3.7	10.7	18.8	43.0	6.8	17.9	25.7	30.5	123.8
P. Cod	0.0	3.1	2.0	5.1	6.5	0.0	0.3	0.0		6.8
P. Whiting			17,962.9	17,962.9	10,355.1		15,473.6	2,051.7	0.0	27,880.4
Sablefish	311.4	135.0	346.8	793.2	933.1	2.6	969.0	659.4	394.2	2,958.2
Rockfish	25.4	11.2	103.5	140.0	140.2	22.6	93.4	34.3	112.6	403.1
Thornyheads	31.3	3.9	25.2	60.4	635.0	0.6	351.1	345.5	131.9	1,464.1
Arrowtooth Flounder	253.2	3.9	187.4	444.5	1,712.2		221.8	211.6	7.7	2,153.3
Dover Sole	351.8	6.8	360.3	719.0	3,333.5	2.7	1,475.9	1,735.6	717.3	7,265.1
English Sole	0.3	5.9	29.4	35.6	109.2	0.3	11.6	29.6	4.2	154.9
Petrale Sole	56.4	2.0	74.6	132.9	473.6	1.5	146.4	351.6	144.8	1,118.0
Other Flatfish	6.1	1.2	17.8	25.1	198.3	0.3	47.8	127.2	50.7	424.3
Cabezon				0.0	0.0	3.3	0.0	0.4	21.3	25.1
Spiny Dogfish	70.5	119.7	58.5	248.7	39.7		0.1	0.0	1.8	41.5
Other Groundfish			0.0	0.0	0.9	0.1	0.2	28.4	25.4	55.0
Pacific Halibut	13.6	14.2	20.1	48.0	14.1	1.3	72.2	17.0	5.7	110.3
California Halibut				0.0	0.0					0.0
CPS			6,540.4	6,540.4	22,991.3		317.0	3.3		23,311.5
HMS	133.5	6.6	6,585.1	6,725.2	1,214.1	107.2	1,476.1	1,214.1	20.7	4,032.1
Salmon	1.1	22.1	52.0	75.1	22.7	10.3	1.5	0.6	4.1	39.2
Crab	404.3	184.7	4,862.6	5,451.5	1,451.6	395.7	2,546.9	1,433.2	473.0	6,300.4
Pink Shrimp			2,853.2	2,853.2	3,308.5	206.5	3,804.1	3,637.1	619.5	11,575.8
Ridgeback Prawn				0.0						0.0
Spotted Prawn				0.0						0.0
Shrimp	0.2		21.2	21.4		6.4	3.8	4.5	0.2	15.0
Shellfish			93.3	93.3	8.1	65.9	0.7	6.9	0.7	82.3
Other Nongroundfish	0.0	0.1	966.1	966.2	210.5	3.7	479.8	515.2	195.7	1,405.0
Other Non-FMP Groundfish	27.5	15.2	102.6	145.3	460.9	0.3	264.6	249.3	28.0	1,003.1
Total	1,691.0	539.3	41,275.7	43,506.0	47,662.1	838.0	27,775.7	12,682.2	2,990.1	91,948.1

Table 30. Landings by species or species group (mt) by port group in California, 2008.

	Crescent City	Eureka	Fort Bragg	Bodega Bay	San Francisco (excl. Bodega Bay)	Monterey	Morro Bay	Santa Barbara	Los Angeles	San Diego	California Total	Coastwide Total
Lingcod	12.3	16.3	17.0	2.9	8.5	4.6	7.5	0.7	0.7	0.1	70.6	213.2
P. Cod		0.0									0.0	11.9
P. Whiting	3,334.3	1,609.6		0.0	0.5			0.0	0.2	0.0	4,944.6	50,787.9
Sablefish	136.2	491.4	403.0	5.3	140.9	197.5	156.0	7.0	37.7	18.0	1,593.0	5,344.5
Rockfish	138.8	46.4	143.9	17.5	85.9	102.7	115.4	15.4	17.3	17.8	701.2	1,244.3
Thornyheads	112.8	401.8	232.6	0.2	92.4	84.8	13.8	23.9	73.1	82.8	1,118.2	2,642.6
Arrowtooth Flounder	5.7	37.6	1.2	0.0					0.0		44.5	2,642.3
Dover Sole	463.2	1,491.5	645.3	3.4	330.2	25.7	35.5	0.1	0.1		2,995.0	10,979.1
English Sole	0.6	66.0	24.5	8.6	33.9	2.9	0.2	0.4	0.0		137.1	327.6
Petrale Sole	36.3	338.5	204.3	74.9	200.2	28.2	42.1	0.5			924.8	2,175.8
Other Flatfish	32.2	113.6	18.9	0.9	118.6	7.1	9.6	10.0	5.0	0.0	316.0	765.4
Cabazon	2.3	0.1	3.2	0.0	0.4	2.5	10.9	3.1	0.3	0.3	23.1	48.2
Spiny Dogfish	0.1	0.1	26.7			2.8		14.9	0.0		44.6	334.8
Other Groundfish	0.4	6.5	4.1	0.0	2.8	80.9	0.9	2.0	4.8	2.5	104.8	159.8
Pacific Halibut											0.0	158.3
California Halibut		0.6		2.0	92.9	4.4	6.1	75.4	26.0	10.2	217.5	217.5
CPS		0.1			565.4	38,693.2		20,666.2	54,069.5	0.2	113,994.7	143,846.6
HMS	69.1	36.2	3.2	1.0	38.3	52.6	76.1	104.3	128.4	343.3	852.5	11,609.9
Salmon	0.4	0.3									0.6	115.0
Crab	1,119.5	1,043.0	313.9	498.1	858.6	56.7	38.9	422.4	78.2	43.2	4,472.5	16,224.4
Pink Shrimp	633.9	311.5									945.5	15,374.5
Ridgeback Prawn							0.7	231.5	1.4		233.6	233.6
Spotted Prawn						14.3	4.0	44.0	46.1	22.2	130.6	130.6
Shrimp	38.6				20.8			0.0		0.1	59.5	95.9
Shellfish			0.8						0.1	0.1	1.0	176.6
Other Nongroundfish	15.8	573.4	1,228.4	29.8	650.5	188.4	93.8	3,511.0	1,627.5	677.4	8,595.9	10,967.1
Other Non-FMP Groundfish	8.8	118.7	33.0	4.5	12.4	0.9	0.7	1.5	5.8		186.4	1,334.7
Total	6,161.2	6,703.1	3,304.1	649.0	3,253.2	39,550.1	612.2	25,134.4	56,122.4	1,218.3	142,708.0	278,162.1

Table 31. Landings by species or species group (mt) by port group in Washington and Oregon, 2009.

	Puget Sound	North Washington Coast	South & Central WA Coast	Washington Total	Astoria	Tillamook	Newport	Coos Bay	Brookings	Oregon Total
Lingcod	10.1	5.3	8.9	24.4	38.0	5.2	20.9	16.4	24.8	105.3
P. Cod	20.8	22.9	0.3	43.9	50.2		0.3	0.0		50.5
P. Whiting			9,945.6	9,945.6	13,995.6		12,952.6	1,608.1		28,556.4
Sablefish	304.3	172.0	453.5	929.9	921.2	3.6	1,152.6	691.9	532.4	3,301.8
Rockfish	33.8	26.3	168.5	228.5	183.0	25.7	128.4	40.6	138.3	516.0
Thornyheads	34.8	4.7	87.8	127.3	549.1	1.4	458.6	385.0	123.1	1,517.2
Arrowtooth Flounder	496.6		450.3	946.9	2,345.7	3.5	316.3	164.3	11.7	2,841.5
Dover Sole	489.2	6.4	501.8	997.3	3,260.2	7.3	1,626.3	1,846.4	716.4	7,456.6
English Sole	5.0	6.8	9.6	21.4	96.5	1.9	34.8	34.6	3.5	171.2
Petrale Sole	77.5	9.4	68.4	155.3	397.9	3.8	255.5	277.9	77.4	1,012.6
Other Flatfish	12.7	3.1	19.8	35.6	355.3	6.7	59.0	173.2	36.6	630.8
Cabezon				0.0	0.0	2.3	0.6	1.7	25.2	29.8
Spiny Dogfish	2.5	24.9	7.4	34.8	52.2		1.8	1.7	1.9	57.6
Other Groundfish			0.1	0.1	262.2	0.2	220.8	210.4	46.6	740.2
Pacific Halibut	2.9	8.0	14.1	24.9	8.8	0.0	52.3	19.4	5.9	86.4
California Halibut				0.0						0.0
CPS			8,810.3	8,810.3	21,574.7		1.0	0.1		21,575.8
HMS	172.5	14.2	7,185.0	7,371.7	1,210.6	102.0	2,275.4	947.5	38.2	4,573.7
Salmon	1.2	65.8	111.7	178.7	28.7	24.8	18.6	2.4	2.5	76.9
Crab	352.4	47.7	4,041.7	4,441.8	2,005.7	457.5	2,991.6	2,901.5	1,559.3	9,915.5
Pink Shrimp			3,180.0	3,180.0	2,098.5	2.3	2,989.5	4,460.6	497.7	10,048.6
Ridgeback Prawn				0.0						0.0
Spotted Prawn				0.0						0.0
Shrimp	1.1		59.0	60.0		11.1	11.8	6.5	0.6	30.0
Shellfish			113.3	113.3	37.2	74.8	0.8	13.1		125.9
Other Nongroundfish	92.3	0.1	503.7	596.2	28.3	6.2	171.6	230.6	336.2	772.8
Other Non-FMP Groundfish	70.4	16.9	68.6	155.9	155.1	0.7	118.2	62.4	5.5	341.9
Total	2,180.0	434.5	35,809.4	38,423.9	49,654.6	740.9	25,859.6	14,096.4	4,183.5	94,535.0

Table 32. Landings by species or species group (mt) by port group in California, 2009.

	Crescent City	Eureka	Fort Bragg	Bodega Bay	San Francisco (excl. Bodega Bay)	Monterey	Morro Bay	Santa Barbara	Los Angeles	San Diego	California Total	Coastwide Total
Lingcod	7.8	8.9	22.1	1.6	4.7	2.8	7.6	0.6	0.3	0.1	56.5	186.1
P. Cod											0.0	94.5
P. Whiting	1,484.0	307.9				0.3		0.1	0.0		1,792.2	40,294.1
Sablefish	218.0	477.8	523.4	26.1	140.1	160.0	653.3	47.6	45.1	18.4	2,309.9	6,541.5
Rockfish	97.7	37.3	243.9	15.9	98.7	106.0	133.7	35.3	7.5	12.4	788.5	1,533.0
Thornyheads	141.3	352.9	203.2	1.1	68.6	72.5	19.3	26.5	76.4	65.0	1,026.9	2,671.4
Arrowtooth Flounder	4.2	40.7	0.4		0.1						45.4	3,833.8
Dover Sole	588.6	1,584.0	707.8	5.4	248.6	11.6	20.1	0.2	0.1		3,166.4	11,620.2
English Sole	4.8	30.9	12.6	2.1	16.7	6.4	0.0	0.1			73.6	266.2
Petrale Sole	46.1	154.0	159.9	23.8	92.2	33.9	18.9	0.0	0.0	0.0	528.9	1,696.8
Other Flatfish	48.6	57.0	18.0	3.9	95.2	12.3	8.1	8.7	6.3	0.0	258.2	924.6
Cabazon	1.8	0.1	3.3	0.1	0.2	2.5	7.0	3.0	0.2	0.4	18.4	48.2
Spiny Dogfish	0.1	0.0	26.9		0.4	18.3		0.1			45.8	138.2
Other Groundfish	18.8	110.0	20.6	1.4	7.9	49.6	3.2	1.5	0.8	2.9	216.8	957.1
Pacific Halibut	0.0	0.0									0.0	111.4
California Halibut		0.1		11.0	134.6	3.9	8.5	105.5	11.6	9.1	284.3	284.3
CPS			0.1		1,006.4	26,180.8	161.7	62,178.0	48,252.2	0.0	137,779.3	168,165.4
HMS	100.0	106.2	11.1	8.3	127.2	48.2	68.5	70.0	541.9	253.7	1,335.0	13,280.4
Salmon	0.6	0.0						0.0			0.6	256.3
Crab	3,331.9	2,355.6	100.4	166.1	899.3	75.0	17.9	489.5	60.2	48.4	7,544.3	21,901.5
Pink Shrimp	1,103.8	79.7			0.0	0.0					1,183.5	14,412.1
Ridgeback Prawn					0.2		15.6	210.3	8.9		234.9	234.9
Spotted Prawn				0.1	2.1	11.4	4.1	42.5	45.2	20.8	126.2	126.2
Shrimp	45.6	0.2			41.4	0.8		0.0	0.2	0.1	88.3	178.3
Shellfish		0.0							0.0	0.3	0.4	239.5
Other Nongroundfish	12.4	390.1	1,679.9	212.2	476.6	132.7	255.9	3,608.4	2,824.6	635.9	10,228.6	11,597.6
Other Non-FMP Groundfish		0.5	0.0		0.3	0.0	1.4	2.1	6.6		10.8	508.6
Total	7,255.9	6,094.0	3,733.8	479.1	3,461.4	26,929.0	1,404.9	66,829.7	51,888.1	1,067.6	169,143.6	302,102.5

Table 33. Ex-vessel revenue (\$1,000s) by species or species group by port group in Washington and Oregon in 2008.

	Puget Sound	North Washington Coast	South & Central WA Coast	Washington Total	Astoria	Tillamook	Newport	Coos Bay	Brookings	Oregon Total
Lingcod	\$6.5	\$6.8	\$14.1	\$27.4	\$59.8	\$32.1	\$73.8	\$56.9	\$116.3	\$338.8
P. Cod	\$0.0	\$4.8	\$2.1	\$6.9	\$7.4	\$0.0	\$0.3	\$0.0		\$7.7
P. Whiting			\$3,677.0	\$3,677.0	\$2,408.6		\$3,758.2	\$663.1	\$0.0	\$6,829.8
Sablefish	\$1,847.7	\$786.4	\$1,734.3	\$4,368.5	\$4,041.6	\$11.1	\$4,684.5	\$3,157.1	\$1,842.2	\$13,736.6
Rockfish	\$27.3	\$13.9	\$81.8	\$123.0	\$144.5	\$85.4	\$105.5	\$39.1	\$449.4	\$823.9
Thornyheads	\$41.2	\$6.0	\$36.4	\$83.7	\$770.8	\$0.7	\$443.9	\$393.4	\$176.9	\$1,785.7
Arrowtooth Flounder	\$55.3	\$0.7	\$40.9	\$96.9	\$379.2		\$48.0	\$45.0	\$1.8	\$473.9
Dover Sole	\$285.2	\$5.7	\$288.5	\$579.4	\$2,729.7	\$2.3	\$1,180.4	\$1,369.1	\$593.4	\$5,874.9
English Sole	\$0.2	\$4.5	\$20.2	\$24.8	\$73.6	\$0.2	\$7.8	\$18.3	\$2.8	\$102.7
Petrale Sole	\$122.5	\$4.5	\$160.9	\$287.9	\$1,040.6	\$3.6	\$296.9	\$713.8	\$317.7	\$2,372.6
Other Flatfish	\$4.9	\$0.8	\$14.5	\$20.2	\$165.8	\$0.3	\$35.7	\$99.3	\$36.0	\$337.0
Cabezon				\$-	\$0.0	\$33.1	\$0.1	\$1.7	\$154.1	\$189.1
Spiny Dogfish	\$39.3	\$54.1	\$3.1	\$96.6	\$32.8				\$0.3	\$33.1
Other Groundfish				\$-	\$0.2	\$0.8	\$0.1	\$6.8	\$236.5	\$244.4
Pacific Halibut	\$108.0	\$99.1	\$142.9	\$349.9	\$114.4	\$9.8	\$583.3	\$153.7	\$43.9	\$905.1
California Halibut				\$-	\$0.0					\$0.0
CPS			\$1,363.0	\$1,363.0	\$5,658.9		\$71.1	\$0.3		\$5,730.2
HMS	\$367.0	\$17.3	\$16,840.9	\$17,225.3	\$3,291.3	\$251.8	\$3,912.2	\$3,198.3	\$60.8	\$10,714.3
Salmon	\$9.8	\$204.2	\$438.5	\$652.4	\$223.0	\$121.2			\$51.1	\$395.4
Crab	\$2,944.3	\$1,220.9	\$26,585.6	\$30,750.8	\$6,410.7	\$1,911.8	\$12,120.2	\$6,453.1	\$2,272.5	\$29,168.2
PINK SHRIMP			\$3,294.6	\$3,294.6	\$3,927.8	\$246.9	\$4,736.5	\$4,295.9	\$730.3	\$13,937.4
Ridgeback Prawn				\$-						\$-
Spotted Prawn				\$-						\$-
Shrimp	\$0.4		\$115.3	\$115.7		\$29.1	\$25.0	\$59.6	\$4.5	\$118.1
Shellfish			\$355.8	\$355.8	\$42.5	\$74.9	\$0.9	\$12.0	\$2.4	\$132.7
Other Nongroundfish	\$0.0	\$0.1	\$558.5	\$558.6	\$13.9	\$2.2	\$404.4	\$651.0	\$157.6	\$1,229.1
Other Non-FMP Groundfish	\$11.2	\$6.4	\$52.3	\$69.8	\$228.4	\$0.1	\$165.5	\$204.8	\$16.6	\$615.4
Total	\$5,870.8	\$2,436.1	\$55,821.3	\$64,128.3	\$31,765.4	\$2,817.6	\$32,654.2	\$21,592.1	\$7,267.0	\$96,096.3

Table 34. Ex-vessel revenue (\$1,000s) by species or species group by port group in California in 2008.

	Crescent City	Eureka	Fort Bragg	Bodega Bay	San Francisco (excl. Bodega Bay)	Monterey	Morro Bay	Santa Barbara	Los Angeles	San Diego	California Total	Coastwide Total
Lingcod	\$51.3	\$37.2	\$44.4	\$8.9	\$33.4	\$17.1	\$36.2	\$5.0	\$5.0	\$0.5	\$239.1	\$605.3
P. Cod		\$0.0									\$0.0	\$14.7
P. Whiting	\$726.9	\$351.3		\$0.0	\$1.2			\$0.1	\$1.9	\$0.0	\$1,081.4	\$11,588.2
Sablefish	\$491.4	\$1,942.8	\$1,574.8	\$29.4	\$538.1	\$743.8	\$572.3	\$37.7	\$179.5	\$123.4	\$6,233.1	\$24,338.1
Rockfish	\$566.9	\$75.6	\$335.4	\$73.4	\$264.0	\$263.0	\$998.7	\$206.7	\$98.5	\$65.0	\$2,947.2	\$3,894.1
Thornyheads	\$186.5	\$464.9	\$291.0	\$0.2	\$148.3	\$255.7	\$19.0	\$195.9	\$602.1	\$716.3	\$2,879.8	\$4,749.2
Arrowtooth Flounder	\$1.3	\$8.4	\$0.3	\$0.0							\$9.9	\$580.8
Dover Sole	\$398.0	\$1,269.2	\$553.5	\$2.6	\$283.4	\$17.0	\$31.9	\$0.3	\$0.4		\$2,556.3	\$9,010.6
English Sole	\$0.4	\$46.7	\$19.6	\$6.9	\$32.6	\$2.9	\$0.2	\$1.4	\$0.0		\$110.7	\$238.3
Petrale Sole	\$76.4	\$732.0	\$508.4	\$180.2	\$493.8	\$71.9	\$127.6	\$1.4			\$2,191.7	\$4,852.2
Other Flatfish	\$23.9	\$89.2	\$15.3	\$0.7	\$123.6	\$10.1	\$12.5	\$11.6	\$21.6	\$0.0	\$308.4	\$665.6
Cabazon	\$17.6	\$0.4	\$38.6	\$0.3	\$4.5	\$36.3	\$153.5	\$52.3	\$3.6	\$3.9	\$311.1	\$500.2
Spiny Dogfish		\$0.0	\$22.9			\$1.5		\$12.0	\$0.0		\$36.4	\$166.1
Other Groundfish	\$3.3	\$1.4	\$4.2	\$0.2	\$4.3	\$44.1	\$10.6	\$3.4	\$6.7	\$5.2	\$83.3	\$327.7
Pacific Halibut											\$-	\$1,255.1
California Halibut		\$2.5		\$23.2	\$886.0	\$43.8	\$68.6	\$884.0	\$292.8	\$108.4	\$2,309.4	\$2,309.4
CPS		\$0.0			\$123.7	\$5,371.8		\$14,324.4	\$16,516.8	\$0.4	\$36,337.2	\$43,430.4
HMS	\$152.1	\$105.3	\$16.0	\$2.8	\$107.5	\$154.0	\$257.7	\$325.7	\$598.6	\$1,420.8	\$3,140.5	\$31,080.1
Salmon	\$3.3	\$2.4									\$5.7	\$1,053.5
Crab	\$5,484.4	\$5,168.0	\$1,867.3	\$3,470.7	\$6,135.7	\$409.4	\$168.6	\$1,212.0	\$239.0	\$108.9	\$24,264.1	\$84,183.1
PINK SHRIMP	\$732.9	\$361.8									\$1,094.7	\$18,326.7
Ridgeback Prawn							\$2.6	\$861.3	\$5.7		\$869.6	\$869.6
Spotted Prawn						\$390.1	\$111.3	\$1,176.3	\$1,098.0	\$433.7	\$3,209.4	\$3,209.4
Shrimp	\$361.9				\$195.1			\$0.2		\$1.9	\$559.1	\$792.9
Shellfish			\$1.3						\$0.1	\$0.2	\$1.6	\$490.0
Other Nongroundfish	\$15.2	\$643.5	\$1,829.2	\$51.1	\$639.7	\$136.8	\$213.6	\$9,076.9	\$5,222.4	\$3,829.1	\$21,657.3	\$23,445.1
Non-FMP Groundfish	\$4.9	\$65.1	\$14.6	\$3.0	\$6.8	\$0.8	\$1.0	\$2.2	\$4.9		\$103.3	\$788.5
Total	\$9,298.3	\$11,367.9	\$7,136.6	\$3,853.7	\$10,021.8	\$7,970.1	\$2,785.7	\$28,390.9	\$24,897.7	\$6,817.7	\$112,540.2	\$272,764.8

Table 35. Ex-vessel revenue (\$1,000s) by species or species group by port group in Washington and Oregon in 2009.

	Puget Sound	North Washington Coast	South & Central WA Coast	Washington Total	Astoria	Tillamook	Newport	Coos Bay	Brookings	Oregon Total
Lingcod	\$14.7	\$9.6	\$12.0	\$36	\$55.2	\$25.9	\$78.1	\$33.1	\$98.7	\$291
P. Cod	\$21.2	\$25.8	\$0.3	\$47	\$48.9		\$0.4	\$0.0		\$49
P. Whiting			\$1,326.5	\$1,327	\$1,974.3		\$1,546.9	\$261.7		\$3,783
Sablefish	\$1,852.7	\$1,013.4	\$2,147.6	\$5,014	\$3,980.2	\$14.6	\$5,846.9	\$3,389.3	\$2,663.5	\$15,894
Rockfish	\$32.4	\$25.7	\$117.5	\$176	\$180.6	\$98.1	\$155.6	\$52.7	\$573.5	\$1,060
Thornyheads	\$39.9	\$7.2	\$75.8	\$123	\$508.6	\$1.4	\$474.7	\$324.8	\$129.7	\$1,439
Arrowtooth Flounder	\$107.7		\$94.0	\$202	\$511.0	\$0.8	\$67.5	\$34.8	\$2.6	\$617
Dover Sole	\$357.3	\$4.9	\$316.4	\$679	\$2,408.6	\$4.7	\$1,147.0	\$1,221.4	\$510.5	\$5,292
English Sole	\$3.5	\$5.1	\$6.4	\$15	\$60.7	\$1.3	\$21.5	\$20.8	\$2.2	\$106
Petrale Sole	\$146.1	\$22.8	\$128.3	\$297	\$774.2	\$7.5	\$502.7	\$515.6	\$144.0	\$1,944
Other Flatfish	\$10.2	\$2.0	\$13.8	\$26	\$303.9	\$10.0	\$43.3	\$125.6	\$25.8	\$509
Cabezon				\$-	\$0.0	\$22.0	\$2.5	\$11.4	\$187.0	\$223
Spiny Dogfish	\$1.0	\$9.9	\$0.7	\$12	\$33.1			\$0.0	\$0.4	\$34
Other Groundfish				\$-	\$89.3	\$1.3	\$119.9	\$76.3	\$209.7	\$497
Pacific Halibut	\$16.6	\$40.1	\$73.6	\$130	\$56.3	\$0.1	\$321.1	\$124.2	\$31.3	\$533
California Halibut				\$-						\$-
CPS			\$1,765.4	\$1,765	\$5,304.0					\$5,304
HMS	\$430.5	\$35.4	\$16,010.6	\$16,477	\$2,740.7	\$216.0	\$5,072.0	\$2,067.7	\$94.5	\$10,191
Salmon	\$9.2	\$428.8	\$1,041.3	\$1,479	\$103.3	\$101.2	\$95.6	\$13.3	\$30.1	\$343
Crab	\$2,448.1	\$313.3	\$19,310.9	\$22,072	\$8,376.6	\$2,144.2	\$13,235.9	\$12,192.1	\$6,464.2	\$42,413
PINK SHRIMP			\$2,157.1	\$2,157	\$1,449.5	\$1.5	\$2,026.2	\$3,012.1	\$323.2	\$6,813
Ridgeback Prawn				\$-						\$-
Spotted Prawn				\$-						\$-
Shrimp	\$7.7		\$381.5	\$389		\$40.7	\$62.1	\$67.1	\$11.4	\$181
Shellfish			\$406.8	\$407	\$163.4	\$84.3	\$0.8	\$18.8		\$267
Other Nongroundfish	\$149.5	\$0.1	\$784.5	\$934	\$9.7	\$7.8	\$143.0	\$294.3	\$338.5	\$793
Non-FMP Groundfish	\$26.3	\$5.9	\$24.7	\$57	\$60.7	\$0.2	\$61.6	\$22.9	\$1.5	\$147
Total	\$5,674.6	\$1,950.0	\$46,195.8	\$53,820	\$29,192.8	\$2,783.6	\$31,025.2	\$23,879.9	\$11,842.2	\$98,724

Table 36. Ex-vessel revenue (\$1,000s) by species or species group by port group in California in 2009, .

	Crescent City	Eureka	Fort Bragg	Bodega Bay	San Francisco (excl. Bodega Bay)	Monterey	Morro Bay	Santa Barbara	Los Angeles	San Diego	California Total	Coastwide Total
Lingcod	\$28	\$22	\$56	\$5	\$21	\$10	\$37	\$4	\$2	\$1	\$186	\$514
P. Cod											\$-	\$97
P. Whiting	\$164	\$34				\$0		\$0	\$0		\$198	\$5,307
Sablefish	\$984	\$2,058	\$2,356	\$128	\$584	\$622	\$2,462	\$196	\$260	\$118	\$9,767	\$30,676
Rockfish	\$393	\$75	\$427	\$56	\$228	\$264	\$958	\$266	\$52	\$39	\$2,759	\$3,995
Thornyheads	\$197	\$401	\$232	\$1	\$94	\$211	\$86	\$222	\$630	\$536	\$2,612	\$4,174
Arrowtooth Flounder	\$1	\$9	\$0		\$0						\$10	\$829
Dover Sole	\$467	\$1,280	\$581	\$3	\$204	\$7	\$18	\$1	\$1		\$2,562	\$8,533
English Sole	\$3	\$22	\$9	\$2	\$15	\$6	\$0	\$0			\$57	\$178
Petrale Sole	\$85	\$293	\$364	\$56	\$209	\$79	\$53	\$0	\$0	\$0	\$1,138	\$3,379
Other Flatfish	\$41	\$44	\$15	\$5	\$95	\$18	\$13	\$12	\$17	\$0	\$260	\$795
Cabazon	\$14	\$1	\$40	\$1	\$2	\$35	\$90	\$43	\$2	\$5	\$232	\$455
Spiny Dogfish	\$0		\$25		\$0	\$14		\$0			\$39	\$84
Other Groundfish	\$9	\$36	\$12	\$1	\$7	\$29	\$12	\$3	\$1	\$6	\$115	\$612
Pacific Halibut	\$0	\$0									\$0	\$664
California Halibut		\$1		\$102	\$1,176	\$34	\$89	\$956	\$119	\$86	\$2,562	\$2,562
CPS			\$0		\$255	\$4,539	\$110	\$35,944	\$22,668	\$0	\$63,516	\$70,585
HMS	\$213	\$295	\$48	\$19	\$459	\$134	\$250	\$169	\$874	\$1,038	\$3,499	\$30,166
Salmon	\$5	\$0						\$0			\$6	\$1,828
Crab	\$13,845	\$9,815	\$658	\$1,032	\$4,823	\$480	\$68	\$1,439	\$169	\$109	\$32,437	\$96,922
PINK SHRIMP	\$730	\$53			\$0	\$0					\$783	\$9,753
Ridgeback Prawn					\$1		\$61	\$864	\$39		\$965	\$965
Spotted Prawn				\$2	\$60	\$304	\$108	\$999	\$1,047	\$408	\$2,929	\$2,929
Shrimp	\$402	\$0			\$391	\$11		\$0	\$3	\$4	\$811	\$1,382
Shellfish		\$0							\$0	\$0	\$1	\$675
Other Nongroundfish	\$14	\$455	\$2,575	\$314	\$346	\$69	\$498	\$8,406	\$5,699	\$3,686	\$22,061	\$23,789
Non-FMP Groundfish		\$0	\$0		\$0	\$0	\$2	\$2	\$4		\$9	\$213
Total	\$17,598	\$14,893	\$7,399	\$1,727	\$8,970	\$6,866	\$4,914	\$49,526	\$31,587	\$6,034	\$149,514	\$302,058

Table 37. Landings (mt) by sector and port group, 2008.

Port Group	Shoreside Whiting Trawl	Shoreside Nonwhiting Trawl	Limited Entry Fixed Gear	Open Access Fixed Gear	Incidentally Caught Groundfish	Grand Total
Puget Sound		823.1	314.2		X	X
North Washington Coast		X	251.2	29.8	X	311.7
South & Central WA Coast	18,082.3	873.5	277.5	27.7	20.6	19,281.6
Astoria	10,371.1	7,911.1	140.6	15.5	2.7	18,441.1
Tillamook		X		33.3	0.5	X
Newport	15,491.8	3,143.8	371.2	43.3	23.4	19,073.5
Coos Bay	X	3,540.0	180.4	74.1	3.4	X
Brookings		1,279.9	162.5	227.0	1.1	1,670.5
Crescent City	3,358.2	754.0	64.0	106.9	0.8	4,283.9
Eureka	1,620.8	2,921.0	123.0	73.0	0.2	4,738.0
Fort Bragg		1,534.4	111.1	111.5	0.8	1,757.8
Bodega Bay		X	X	2.3	X	118.1
San Francisco*		943.3	33.4	35.3	14.7	1,026.7
Monterey		X	143.5	110.3	1.1	X
Morro Bay		168.9	X	190.2	2.8	X
Santa Barbara		X	32.0	15.3	31.7	X
Los Angeles			113.0	17.7	14.5	145.2
San Diego			104.8	12.8	4.0	121.6
Total	X	24,323.2	2,462.7	1,126.1	123.5	79,012.1

*excluding Bodega Bay

X- excluded for data confidentiality

Table 38. Landings (mt) by sector and port group, 2009.

Port Group	Shoreside Whiting Trawl	Shoreside Nonwhiting Trawl	Limited Entry Fixed Gear	Open Access Fixed Gear	Incidentally Caught Groundfish	Grand Total
Puget Sound		1,295.5	257.4		X	X
North Washington Coast		X	220.2	23.1	1.7	X
South & Central WA Coast	10,090.9	1,346.2	308.6	41.0	3.8	11,790.6
Astoria	14,085.8	8,406.4	148.3	16.5	5.1	22,662.2
Tillamook		X		34.5	0.2	X
Newport	12,993.0	3,774.6	525.1	42.4	11.8	17,347.0
Coos Bay	X	3,619.1	191.4	85.2	6.5	X
Brookings		1,201.1	263.5	276.9	1.8	1,743.3
Crescent City	1,489.4	982.5	108.0	81.4	0.4	2,661.7
Eureka	X	2,678.7	101.8	73.0	X	3,162.0
Fort Bragg		1,684.1	154.6	102.9	0.6	1,942.3
Bodega Bay		X	X	17.2	3.8	81.4
San Francisco*		648.5	59.9	36.3	29.0	773.7
Monterey		X	108.2	71.3	0.7	X
Morro Bay		X	202.0	568.8	2.1	X
Santa Barbara			35.6	74.2	15.9	125.7
Los Angeles			117.7	12.9	12.7	143.2
San Diego			82.1	13.3	3.8	99.2
Total	40,580.1	26,164.7	X	1,571.1	104.7	71,314.5

*excluding Bodega Bay

X- excluded for data confidentiality

Table 39. Ex-vessel revenue (\$1,000s) by sector and port group, 2008.

Port Group	Shoreside Whiting Trawl	Shoreside Nonwhiting Trawl	Limited Entry Fixed Gear	Open Access Fixed Gear	Incidentally Caught Groundfish	Grand Total
Puget Sound		\$1,001.0	\$1,435.1		X	X
North Washington Coast		X	\$757.1	\$90.2	X	X
South & Central WA Coast	\$3,728.7	\$836.6	\$1,390.4	\$133.5	\$36.9	\$6,126.1
Astoria	\$2,422.5	\$8,785.4	\$797.4	\$67.9	\$9.7	\$12,082.9
Tillamook		X		\$155.5	\$1.7	X
Newport	\$3,782.2	\$4,651.1	\$2,103.7	\$218.6	\$45.1	\$10,800.7
Coos Bay	X	\$4,640.5	\$1,082.4	\$366.7	\$15.0	X
Brookings		\$1,876.6	\$821.3	\$1,240.5	\$5.5	\$3,944.0
Crescent City	\$728.3	\$977.1	\$299.2	\$541.4	\$2.7	\$2,548.7
Eureka	\$362.4	\$3,949.6	\$481.1	\$291.0	\$0.3	\$5,084.3
Fort Bragg		\$2,286.2	\$544.0	\$585.5	\$7.1	\$3,422.8
Bodega Bay		X	X	\$37.1	X	\$305.8
San Francisco*		\$1,479.4	\$130.2	\$279.3	\$45.0	\$1,933.9
Monterey		X	\$480.0	\$468.3	\$6.4	X
Morro Bay		\$350.5	X	\$1,485.6	\$16.3	X
Santa Barbara		X	\$245.2	\$226.8	\$56.8	X
Los Angeles			\$806.4	\$85.3	\$32.6	\$924.2
San Diego			\$839.9	\$59.3	\$15.1	\$914.3
Total	X	\$31,622.5	\$12,375.0	\$6,332.5	\$301.8	\$62,319.5

*excluding Bodega Bay

Table 40. Ex-vessel revenue (\$1,000s) by sector and port group, 2009.

Port Group	Shoreside Whiting Trawl	Shoreside Nonwhiting Trawl	Limited Entry Fixed Gear	Open Access Fixed Gear	Incidentally Caught Groundfish	Grand Total
Puget Sound		\$1,130.7	\$1,474.9		X	X
North Washington Coast		X	\$963.5	\$97.3	\$2.1	X
South & Central WA Coast	\$1,408.2	\$1,146.7	\$1,490.0	\$202.9	\$16.3	\$4,264.1
Astoria	\$2,011.2	\$8,052.8	\$825.4	\$83.1	\$16.8	\$10,989.2
Tillamook		X		\$152.9	\$0.7	\$187.8
Newport	\$1,574.3	\$5,106.3	\$3,103.0	\$222.5	\$62.7	\$10,068.7
Coos Bay	X	\$4,166.1	\$1,204.1	\$423.7	\$32.5	X
Brookings		\$1,618.3	\$1,438.5	\$1,483.1	\$9.2	\$4,549.1
Crescent City	\$167.5	\$1,321.0	\$532.4	\$365.4	\$1.6	\$2,387.9
Eureka	X	\$3,500.0	\$427.9	\$192.6	X	\$4,154.6
Fort Bragg		\$2,626.2	\$880.3	\$607.0	\$4.0	\$4,117.6
Bodega Bay		X	X	\$101.2	\$6.4	\$257.1
San Francisco*		\$899.4	\$263.1	\$252.5	\$43.9	\$1,459.0
Monterey		X	\$406.7	\$376.9	\$4.2	X
Morro Bay		X	\$709.8	\$2,802.9	\$8.7	X
Santa Barbara			\$259.1	\$440.8	\$49.8	\$749.7
Los Angeles			\$858.0	\$91.7	\$20.6	\$970.3
San Diego			\$645.3	\$43.3	\$14.4	\$702.9
Total	\$5,459.0	\$30,475.0	X	\$8,059.9	\$301.4	\$59,838.9

*excluding Bodega Bay

Participation

Table 41. Number of vessels making at least one groundfish landing each year by Port Group and Sector, 2005-2006.

Port Group	Limited Entry Fixed Gear	Open Access Fixed Gear	Nonwhiting Trawl	Incidentally Caught Groundfish	Shoreside Whiting Trawl
2005					
Puget Sound	18	5	6	3	0
North Washington Coast	12	26	7	13	0
South & Central WA Coast	16	51	4	35	9
Astoria	9	32	29	18	5
Tillamook	0	42	1	35	0
Newport	13	20	22	89	12
Coos Bay	11	73	19	84	2
Brookings	9	89	7	38	0
Crescent City	6	28	5	9	2
Eureka	6	30	14	6	3
Fort Bragg	2	65	10	10	0
Bodega Bay	1	13	0	12	0
San Francisco*	6	41	17	54	0
Monterey	8	62	9	58	1
Morro Bay	0	78	9	25	0
Santa Barbara	9	32	0	52	0
Los Angeles	28	26	0	47	0
San Diego	18	13	0	19	0
Total Vessels	126	678	123	552	29
2006					
Puget Sound	20	5	6	3	0
North Washington Coast	15	23	4	17	0
South & Central WA Coast	14	73	5	36	15
Astoria	5	25	32	34	11
Tillamook	0	46	1	23	0
Newport	16	47	23	78	10
Coos Bay	8	75	19	30	3
Brookings	9	90	9	20	0
Crescent City	7	33	7	15	2
Eureka	8	33	17	3	4
Fort Bragg	2	63	9	14	0
Bodega Bay	1	13	2	15	0
San Francisco*	6	58	16	46	0
Monterey	12	56	9	34	0
Morro Bay	4	105	4	34	0
Santa Barbara	11	49	0	65	0
Los Angeles	24	27	0	40	0
San Diego	18	14	0	30	0
Total Vessels	132	774	122	481	37

*excluding Bodega Bay

Table 42. Number of vessels making at least one groundfish landing each year by Port Group and Sector, 2007-2008.

Port Group	Limited Entry Fixed Gear	Open Access Fixed Gear	Nonwhiting Trawl	Incidentally Caught Groundfish	Shoreside Whiting Trawl
2007					
Puget Sound	20	3	6	5	0
North Washington Coast	13	24	2	11	0
South & Central WA Coast	10	38	8	20	14
Astoria	6	15	32	21	10
Tillamook	0	38	1	25	0
Newport	15	39	22	75	14
Coos Bay	13	53	23	60	3
Brookings	11	90	8	29	0
Crescent City	6	27	7	17	3
Eureka	8	34	18	4	4
Fort Bragg	4	58	8	11	0
Bodega Bay	1	14	2	10	0
San Francisco (excl. Bodega Bay)	4	56	16	33	0
Monterey	9	57	5	23	0
Morro Bay	1	110	6	18	0
Santa Barbara	8	45	0	56	0
Los Angeles	28	28	0	50	0
San Diego	17	18	0	26	0
Total Vessels	136	707	121	468	39
2008					
Puget Sound	16	0	4	2	0
North Washington Coast	9	13	3	3	0
South & Central WA Coast	14	32	7	22	10
Astoria	5	10	31	10	15
Tillamook	0	33	2	5	0
Newport	16	50	24	36	15
Coos Bay	11	53	21	13	3
Brookings	12	85	9	12	0
Crescent City	6	24	10	11	5
Eureka	9	35	14	5	5
Fort Bragg	6	53	7	9	0
Bodega Bay	2	10	1	3	0
San Francisco*	5	49	16	20	0
Monterey	8	68	3	14	0
Morro Bay	2	95	4	25	0
Santa Barbara	8	38	1	49	0
Los Angeles	19	24	0	39	0
San Diego	19	15	0	28	0
Total Vessels	135	663	120	284	37

*excluding Bodega Bay

Table 43. Number of vessels making at least one groundfish landing each year by Port Group and Sector, 2005-2009.

Port Group	Limited Entry Fixed Gear	Open Access Fixed Gear	Nonwhiting Trawl	Incidentally Caught Groundfish	Shoreside Whiting Trawl
	2009				
Puget Sound	16	0	5	3	0
North Washington Coast	8	14	1	9	0
South & Central WA Coast	16	34	7	18	9
Astoria	7	14	33	20	12
Tillamook	0	34	2	9	0
Newport	19	59	26	28	11
Coos Bay	13	48	23	25	3
Brookings	16	88	10	14	0
Crescent City	7	18	7	11	5
Eureka	8	33	12	2	2
Fort Bragg	5	48	7	4	0
Bodega Bay	2	12	2	6	0
San Francisco*	6	57	8	28	0
Monterey	9	64	3	17	0
Morro Bay	8	113	1	19	0
Santa Barbara	5	47	0	50	0
Los Angeles	17	23	0	29	0
San Diego	16	13	0	17	0
Total Vessels	139	670	117	291	34

*excluding Bodega Bay

Table 44. Average annual number of commercial vessels making groundfish deliveries by sector and length category, 2005-2009.

Sector	Vessel Length Categories (feet)							All Lengths	Sector Totals
	< 40	40 - 50	50 - 60	60 - 70	70 - 150	> 150	Unspecified		
Commercial whiting CPs				0.2		7.0	0.4		7.6
Commercial mothership whiting CVs				0.4	17.8		0.8		19.0
Commercial shoreside whiting			1.0	5.0	29.6				35.6
Commercial shoreside non-whiting trawl	1.6	14.8	33.6	28.8	44.8				123.6
Commercial shoreside LE fixed gear	62.2	39.6	18.8	10.0	4.8				135.4
Commercial shoreside OA fixed gear	528.0	126.4	23.6	7.0	3.0	0.2	0.6		688.8
Commercial incidental groundfish	243.4	117.2	25.4	7.2	8.0		0.8		402.0
Commercial non-groundfish									
Length Class Totals	695.6	233.4	83.6	48.2	71.6	7.2	2.0	1,133.8	

Table 45. Average annual number of vessels making groundfish deliveries by port group and length category, 2005-2009.

Port Group	Vessel Length Categories (feet)							All Lengths	Port Group Totals
	< 40	40 - 50	50 - 60	60 - 70	70 - 150	> 150	Unspecified		
Puget Sound	2.0	9.0	5.2	5.6	6.0				27.8
North Washington Coast	16.0	18.8	4.8	1.0	0.6	0.2			41.4
South & Central WA Coast	17.2	33.8	9.4	4.4	12.8		0.4		78.0
Astoria	11.2	12.2	11.2	12.8	22.0				69.4
Tillamook	41.6	6.2	1.6	0.8	0.4				50.6
Newport	40.0	31.2	16.6	7.6	19.0				114.4
Coos Bay	43.4	34.4	12.8	11.2	10.0		0.2		112.0
Brookings	97.8	6.0	2.4	0.4	6.4				113.0
Crescent City	23.2	8.2	6.0	0.8	4.6				42.8
Eureka	27.2	15.2	4.6	3.6	6.0		0.2		56.8
Fort Bragg	46.4	15.0	8.2	0.8	1.2				71.6
Bodega Bay	17.6	2.4	0.6						20.6
San Francisco (excl. Bodega Bay)	52.2	17.2	5.2	3.6	5.2		0.6		84.0
Monterey	68.8	12.2	3.0	1.6	2.4		0.2		88.2
Morro Bay	86.8	17.2	5.0	1.4	2.2		0.4		113.0
Santa Barbara	67.2	15.2	2.0	0.6	0.4		0.2		85.6
Los Angeles	58.2	11.2	3.6	0.6	1.8		0.6		76.0
San Diego	40.4	6.8	0.4						47.6
At- Sea Sectors				0.6	17.8	7.0	1.2		26.6
Length Class Totals	695.6	233.4	83.6	48.2	71.6	7.2	2.0	1,133.8	1,133.8

Figures

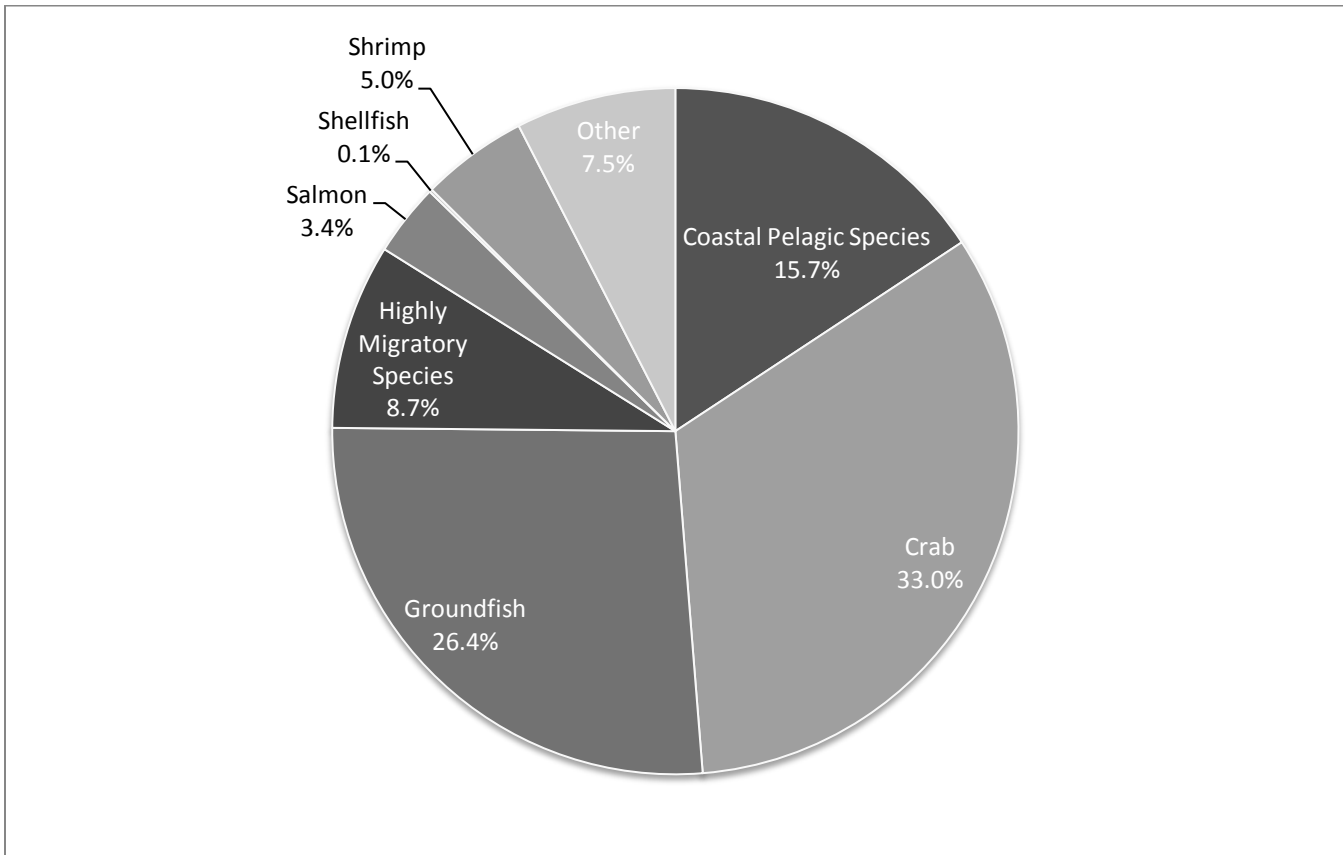


Figure 1. Average ex-vessel revenue by management group (commercial and tribal, at sea and shoreside) in current (2009) dollars as a percent of total, 2005-2009.

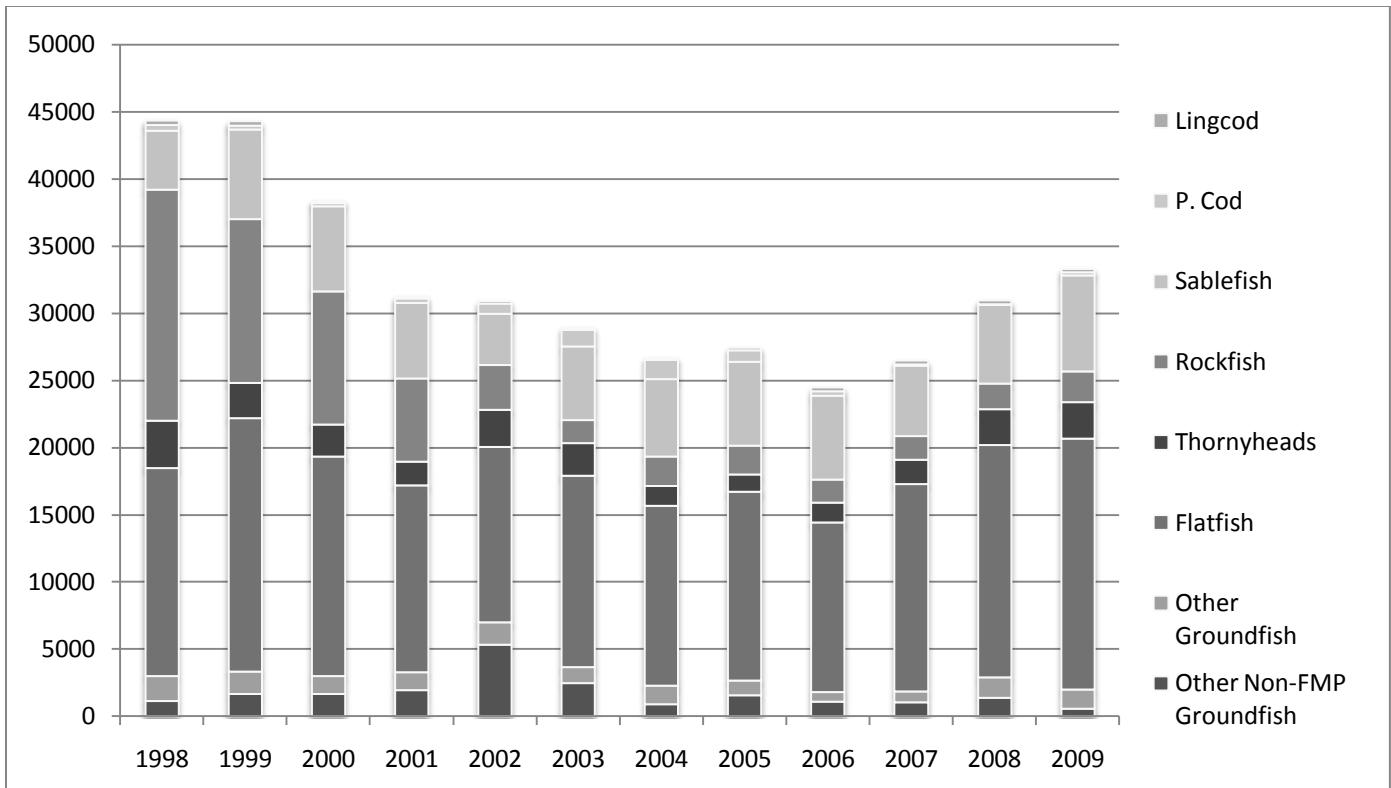


Figure 2. Nonwhiting groundfish landings (mt), 1998-2009.

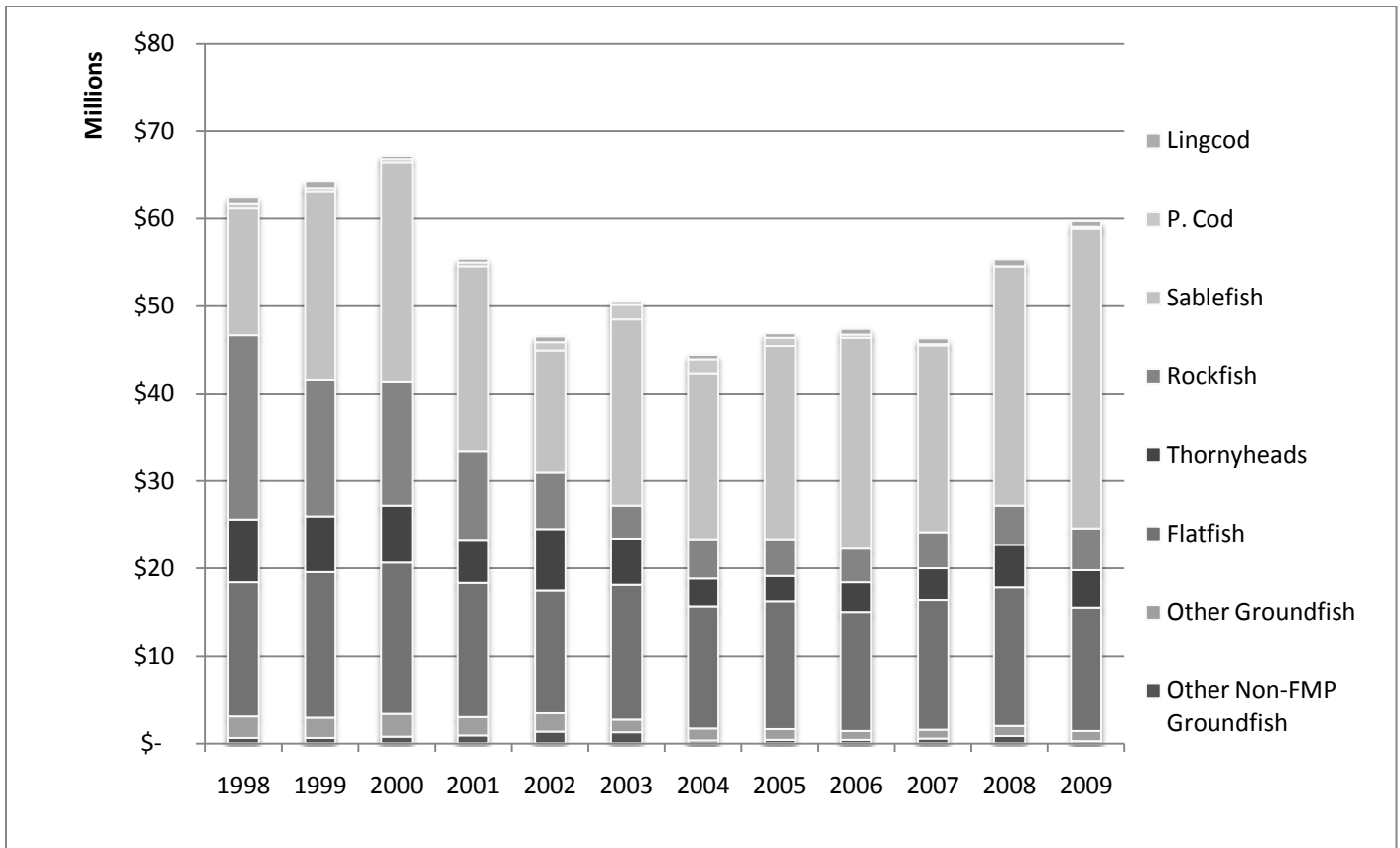


Figure 3. Nonwhiting groundfish ex-vessel revenue in current (2009) dollars, 1998-2009.

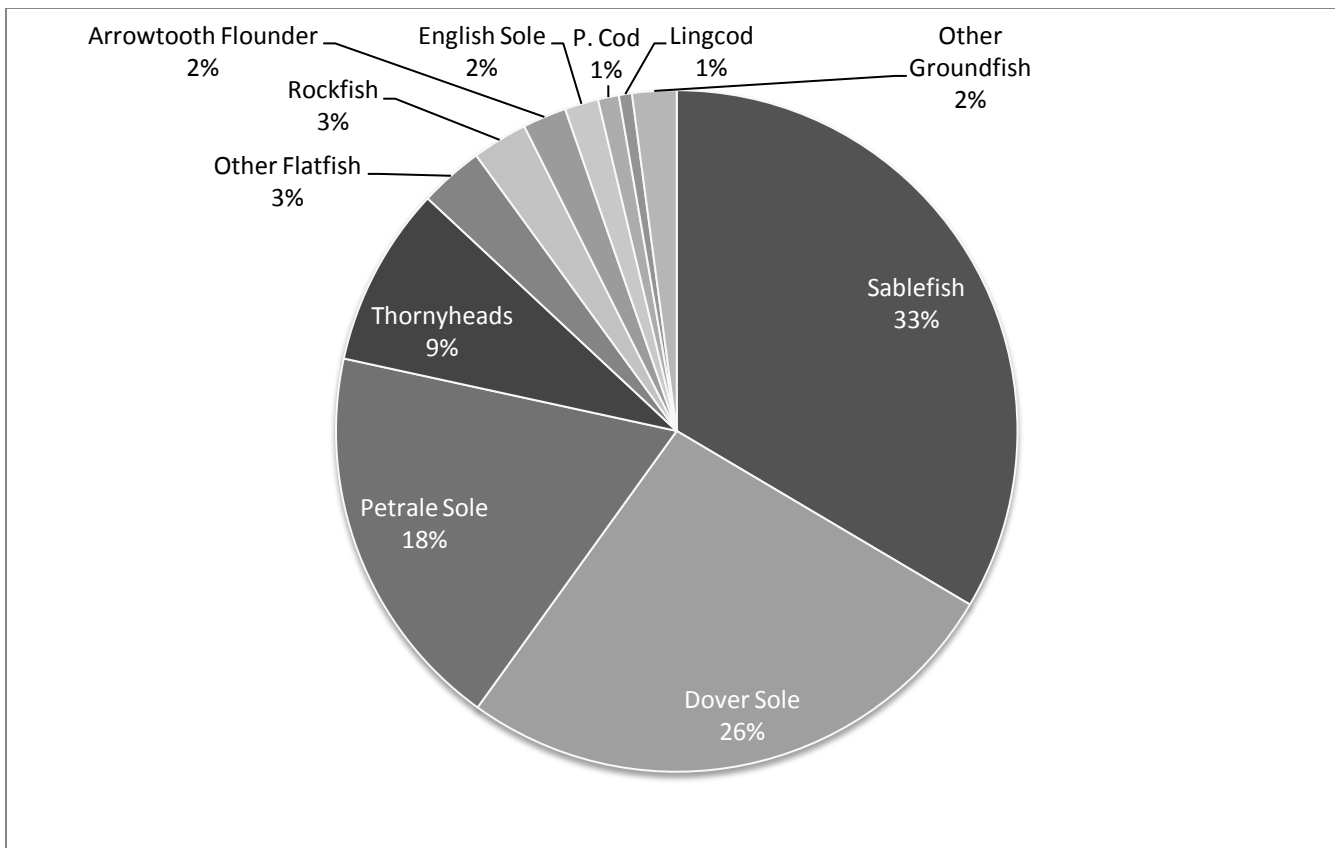


Figure 4. Composition of limited entry nonwhiting trawl ex-vessel revenue, average 2005-2009.

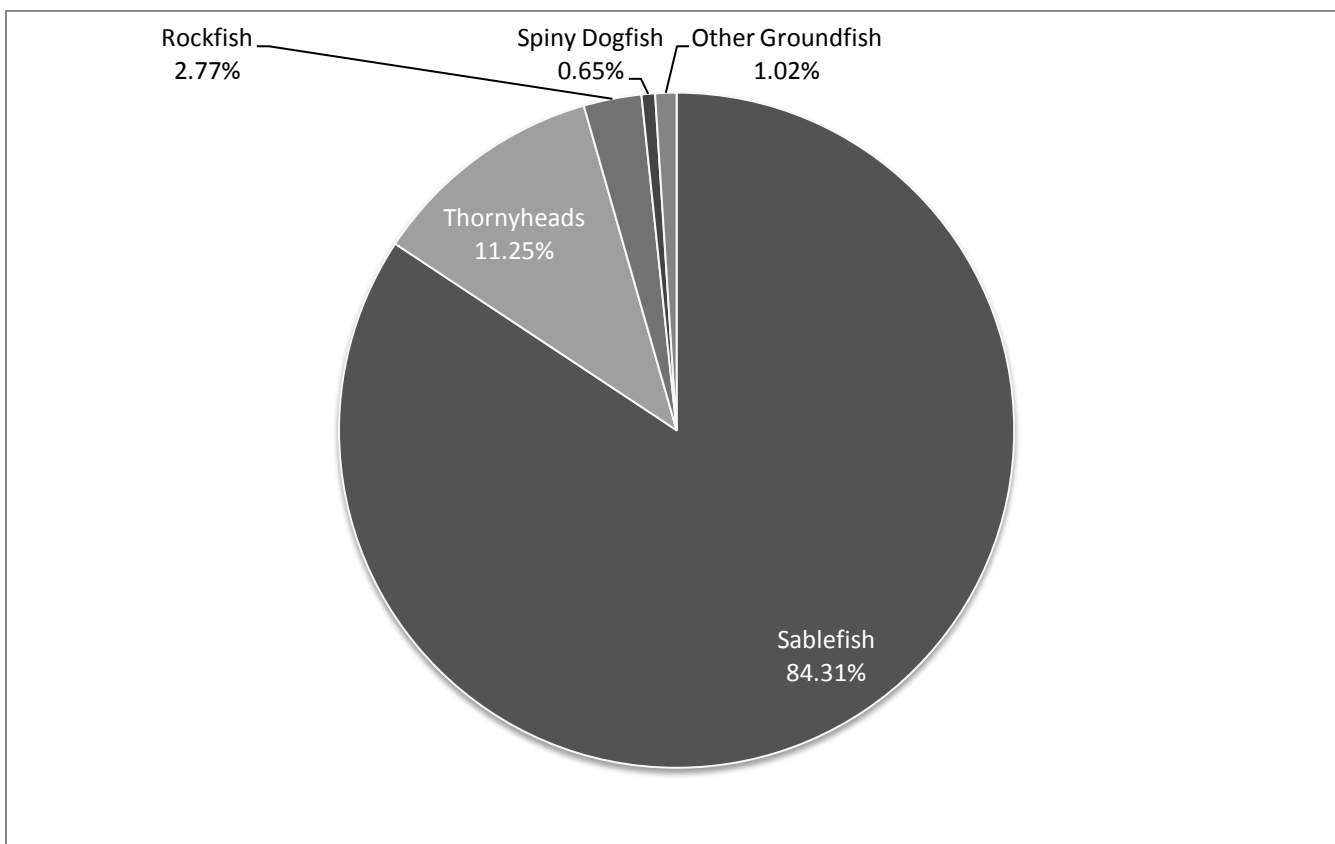


Figure 5. Composition of limited entry fixed gear ex-vessel revenue, average 2005-2009.

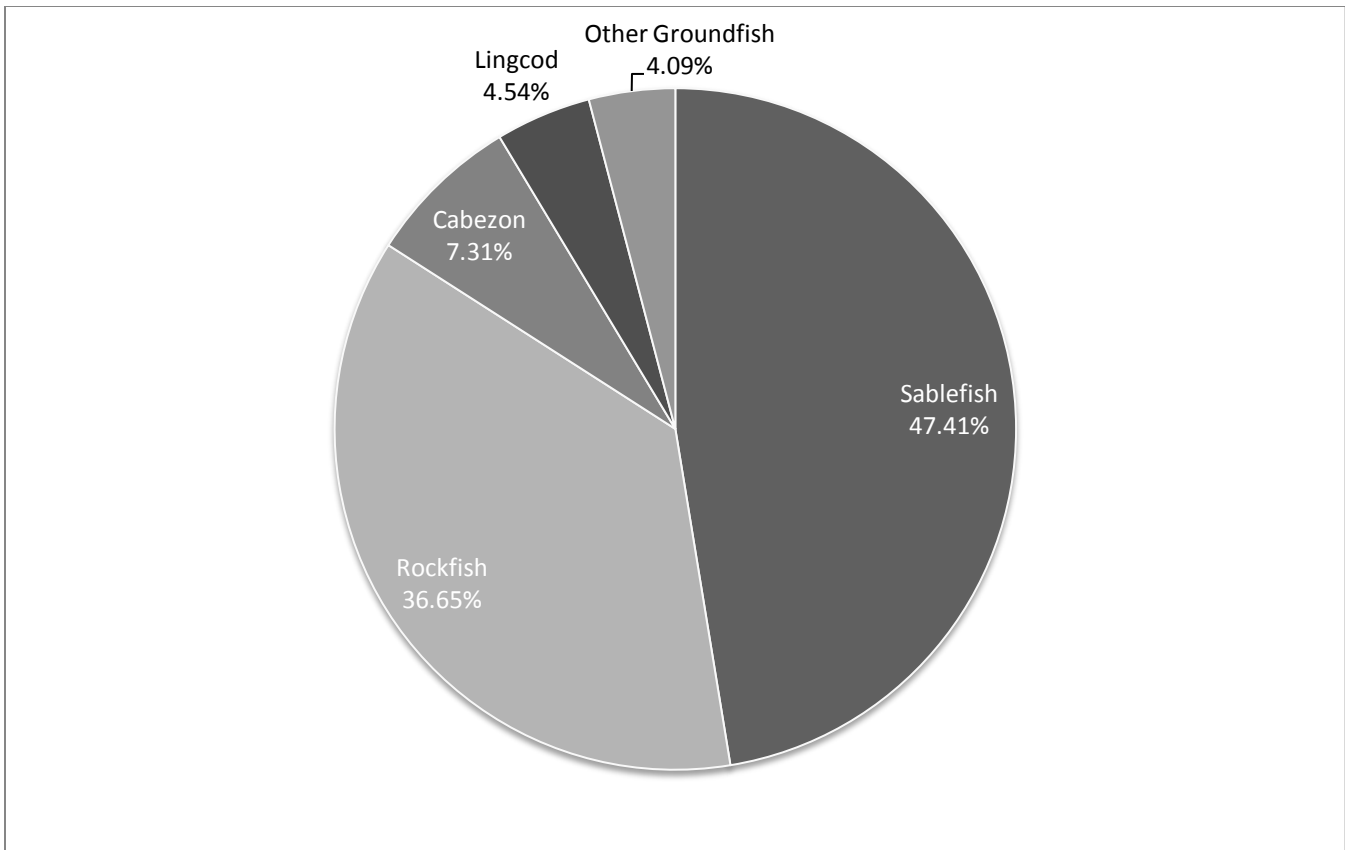


Figure 6. Composition of open access fixed gear ex-vessel revenue, average 2005-2009.

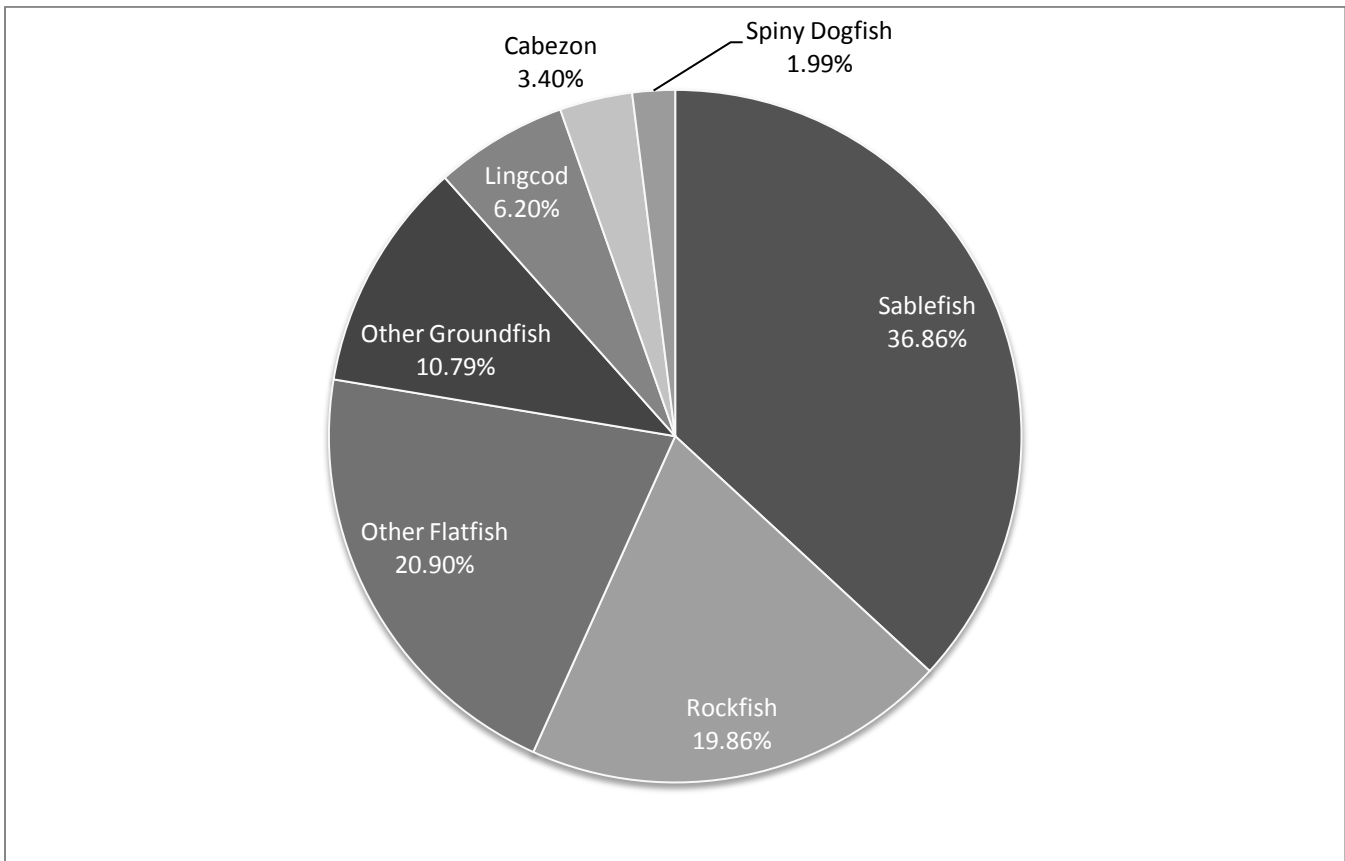


Figure 7. Composition of incidentally caught groundfish ex-vessel revenue, average 2005-2009.

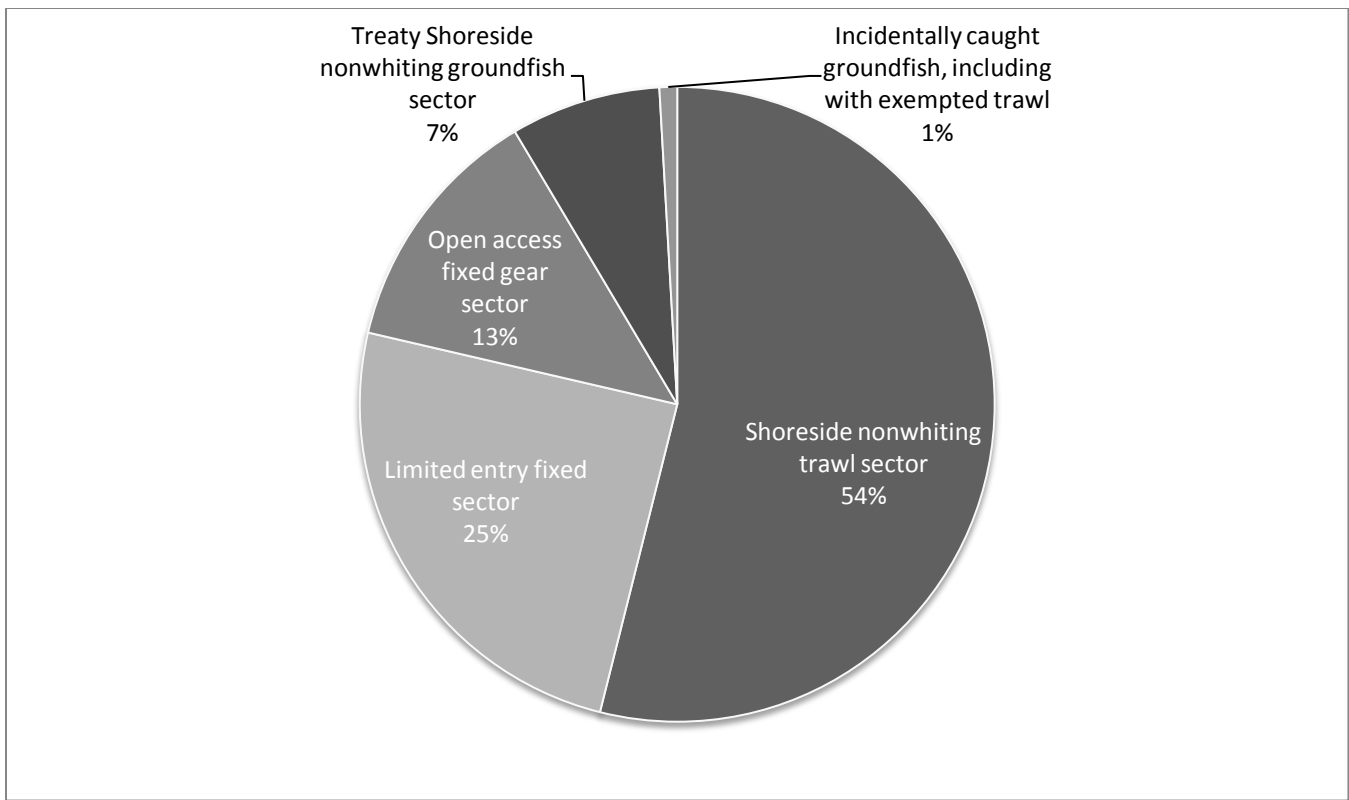


Figure 8. Groundfish ex-vessel revenue, proportion by nonwhiting sectors, 2005-2009.

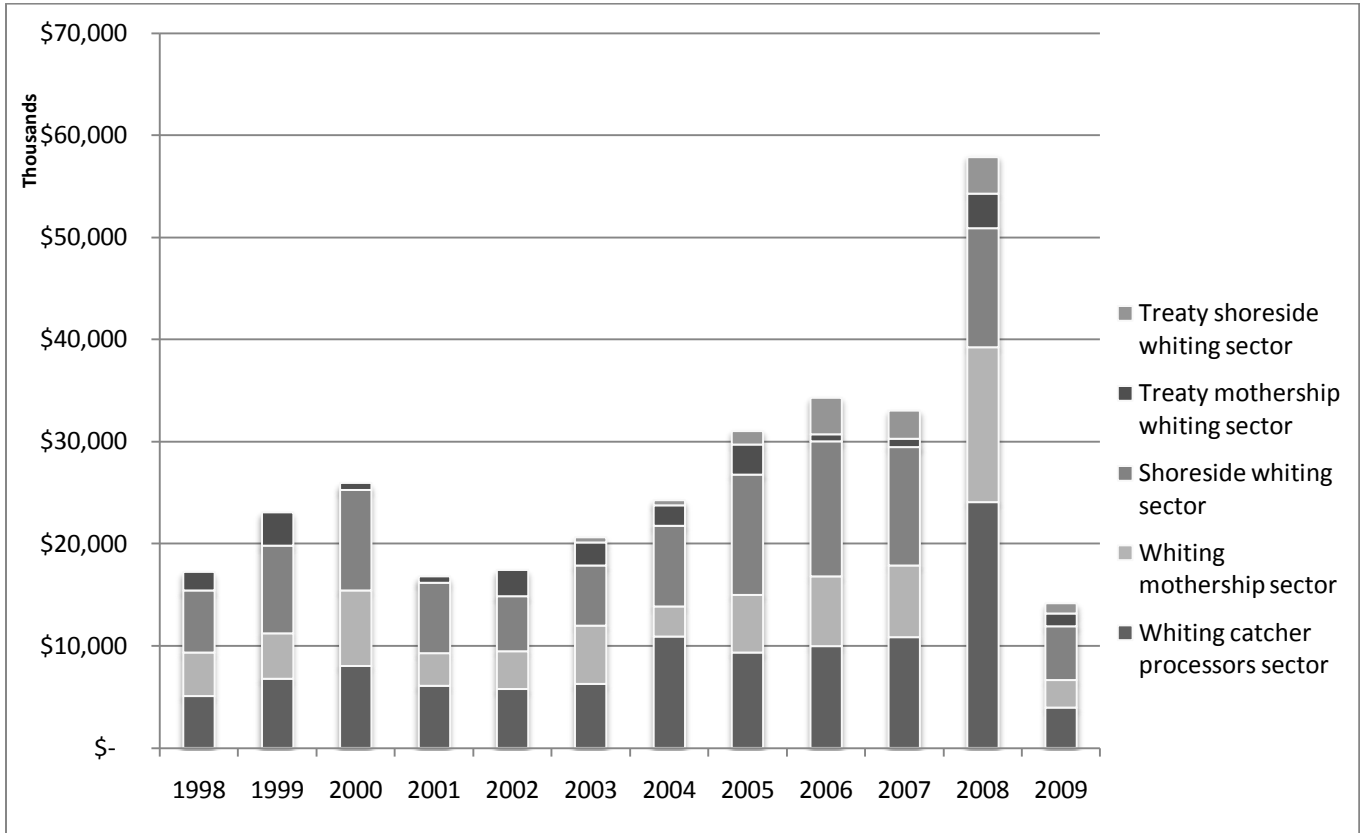


Figure 9. Whiting ex-vessel revenue (mt) by whiting sectors, current (2009) dollars, 1998-2009.

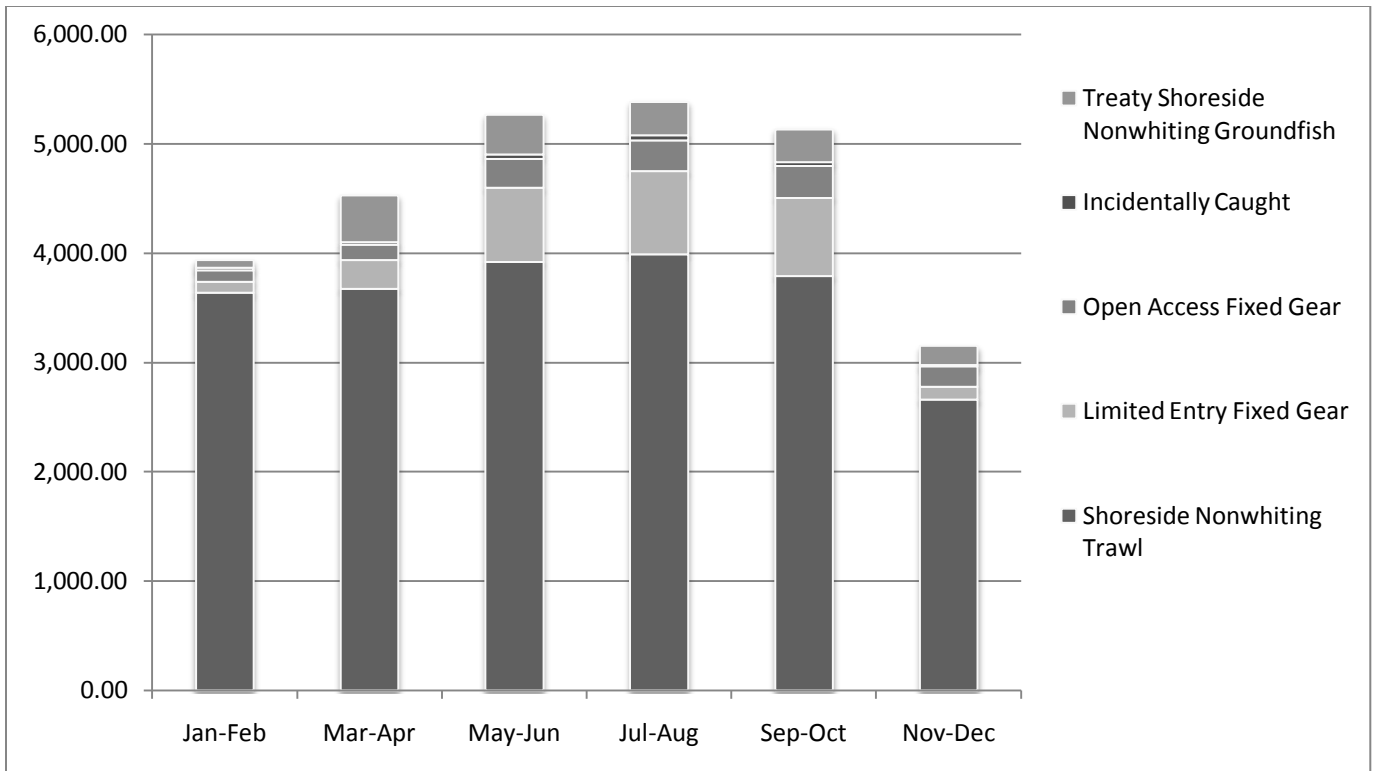


Figure 10. Average landings per 2-month period by nonwhiting sectors, 2005-2009.

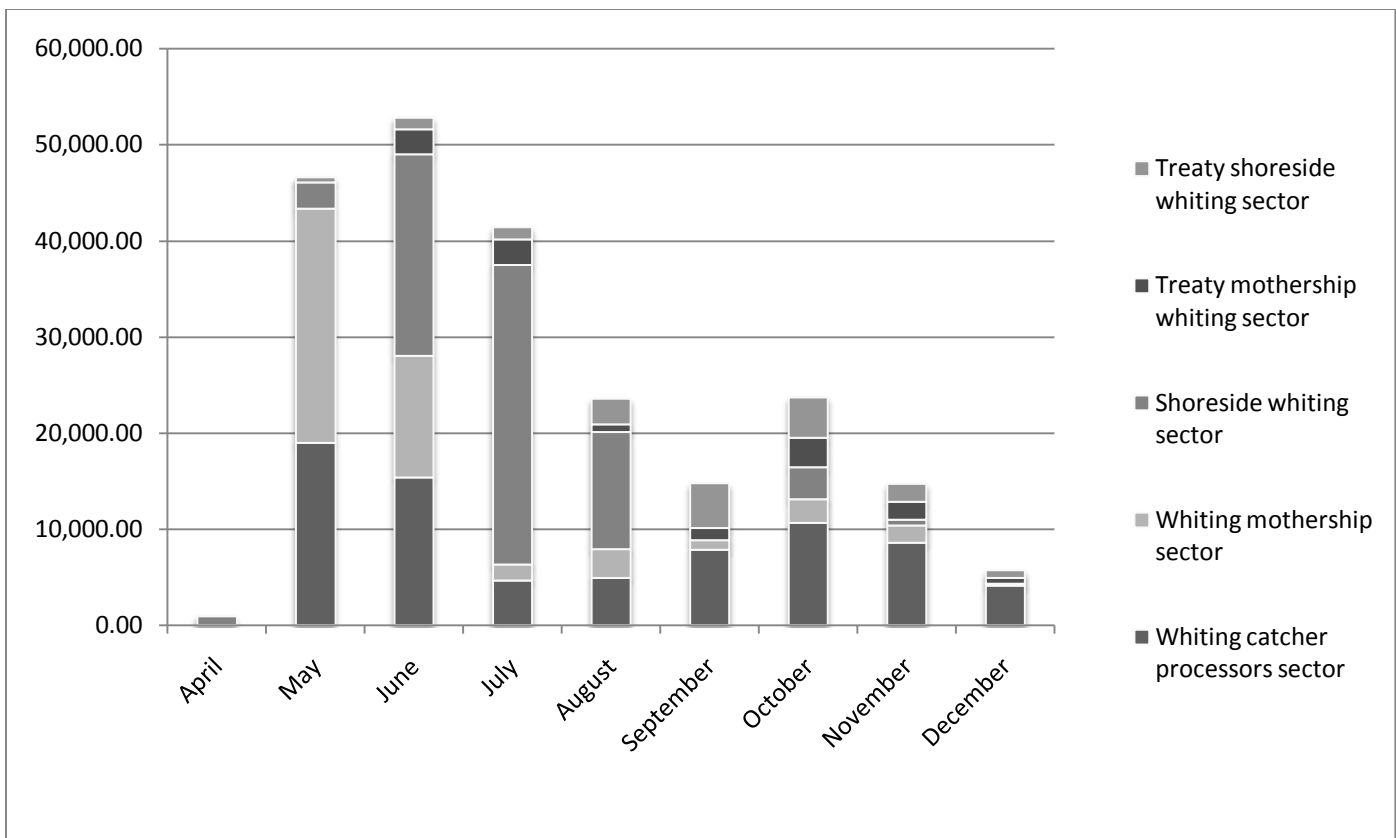


Figure 11. Average monthly landings (mt) by whiting sectors, 2005-2009.

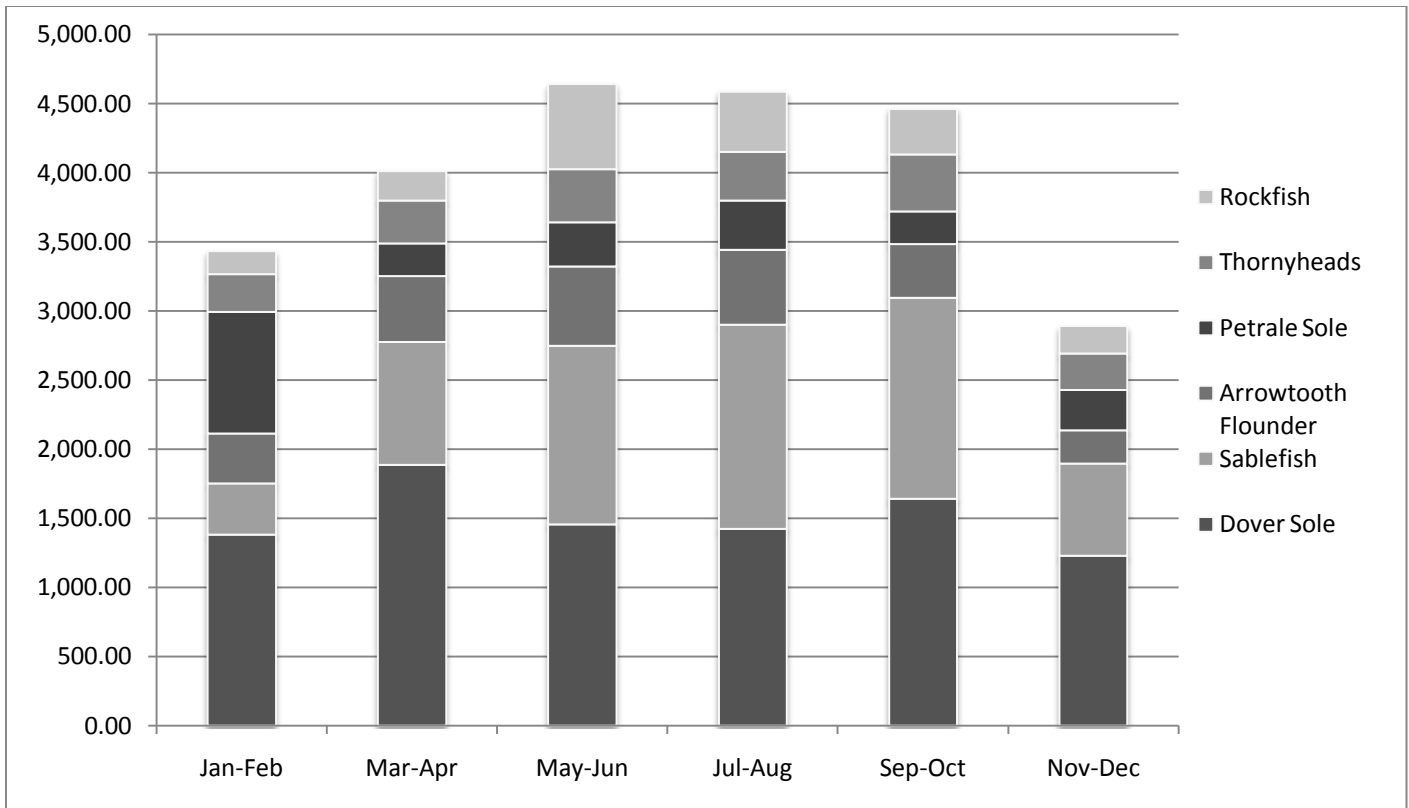


Figure 12. Average landings (mt) per 2-month period of selected groundfish species, 2005-2009.

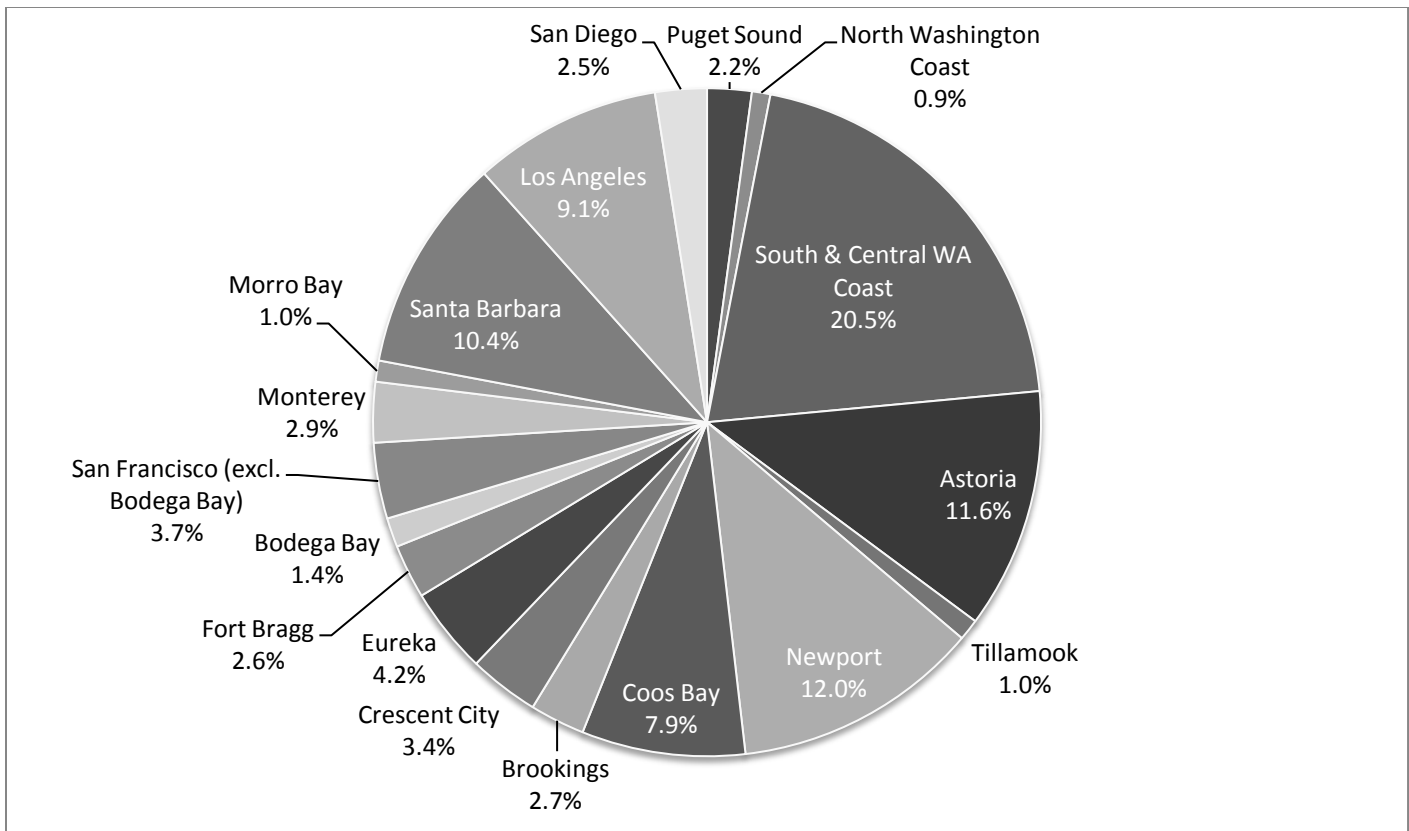


Figure 13. Ex-vessel revenue in 2009 by port group, for all species.

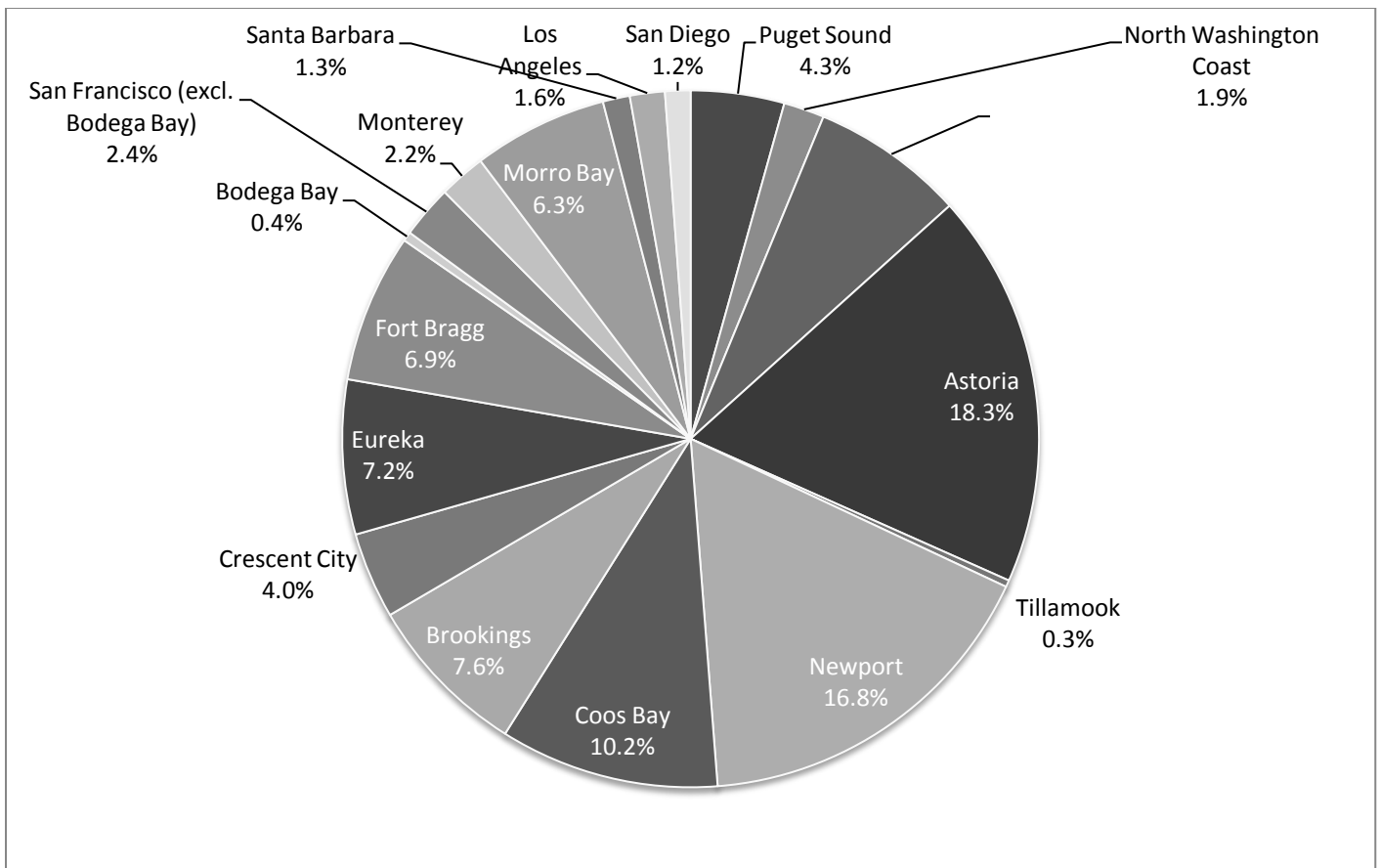


Figure 14. Ex-vessel revenue in 2009 by port group, for groundfish species

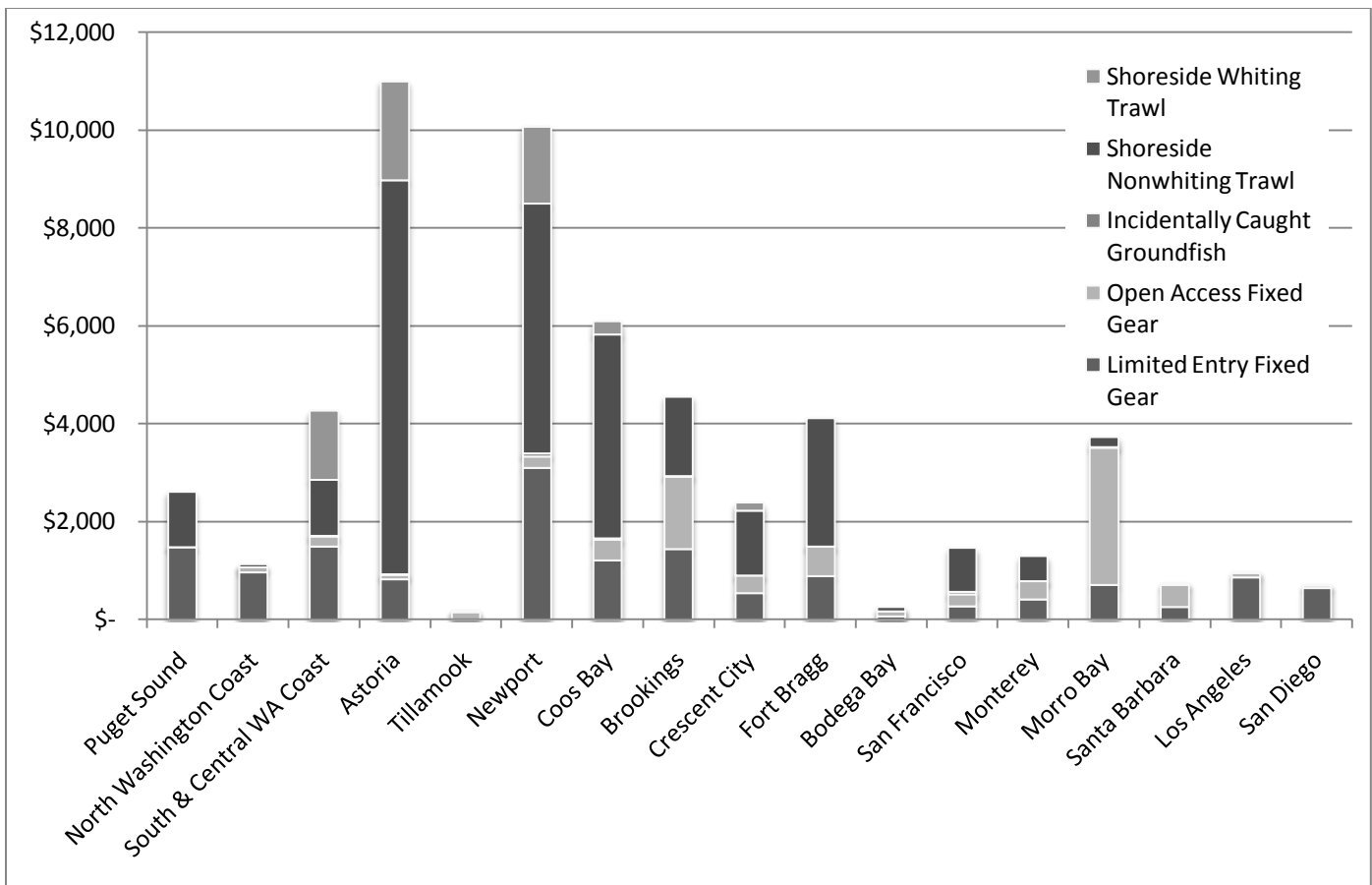


Figure 15. Ex-vessel revenue (\$1,000s) in 2009 by sector and port group.

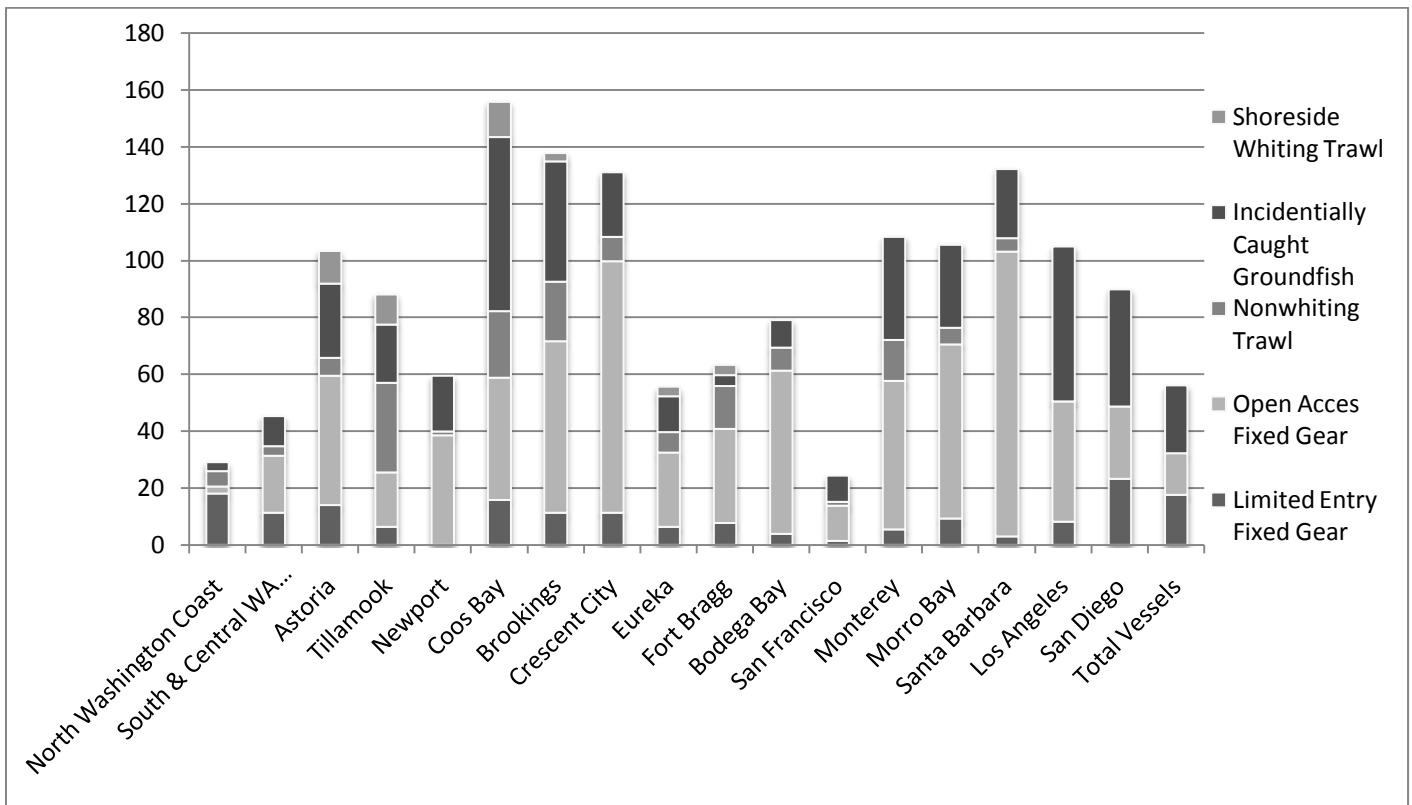


Figure 16. Average number of vessels making landings by sector and port group, 2005-2009.