

California Central Coast RCA Study

EFP Applicant:
Central Coast Sustainable
Groundfish Association
[now Central CA Seafood
Marketing Association]

California Risk Pool

FORT BRAGG – CENTRAL COAST RISK POOL ANNUAL SUMMARY REPORT 2012



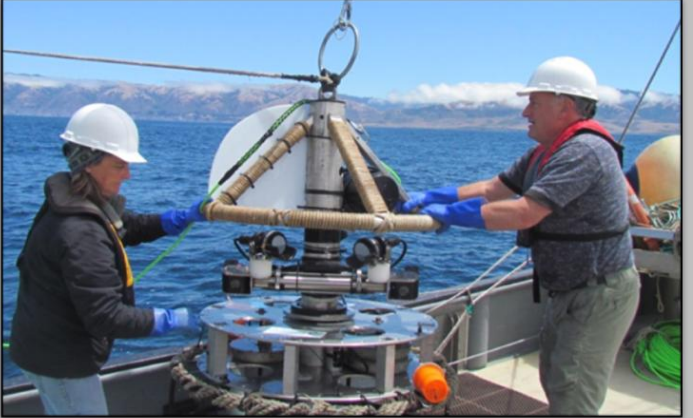
Report prepared by: Kate Labrecq^{*} and Danyne Obenhoff[†]

Fort Bragg Groundfish Association
A California Fish Marketing Act Corporation
Central Coast Sustainable Groundfish Association
(Now: Central California Seafood Marketing Association)
A California Fish Marketing Act Corporation
The Nature Conservancy
A District of Columbia Non-profit Corporation

March 2013

^{*} The Nature Conservancy
[†] Ecological Asset Management, LLC

- Minimize OFS encounters
- Maximize target harvest
- Avoid sensitive habitat
- Contribute to rebuilding stocks



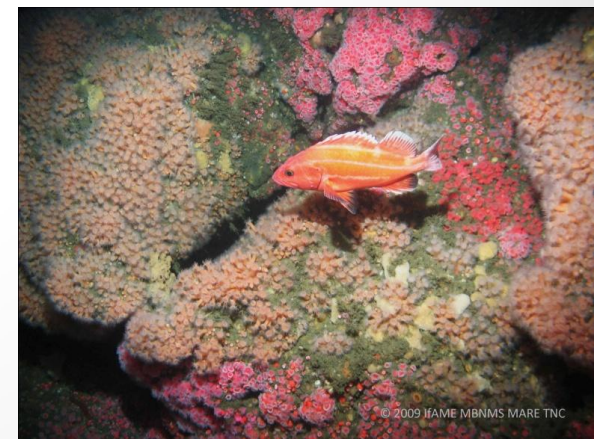
California Central Coast RCA Study

Project Partners: TNC, MLML /
California Sea Grant, NMFS/SWFSC,
EDF, CCSGA/CCSMA, local fishermen,
UCSB

EFP Applicant: Central CA Seafood
Marketing Association

Study Elements

- Mapping predicted OFS distributions based on existing fisheries data
 - FRAM Trawl Survey, AK Science Center trawl survey, CPFV catch data
- Visual surveys inside the RCA using video system
- Directed fishing inside the RCA
 - vertical hook and line gear - target abundant species



Broader Project Goals

- Build better maps of OFS distribution utilizing available data, local knowledge, and ground-truthing through field surveys
- Better inform both fishing opportunities (eg. targeting chilis and avoiding bycatch) and management decisions (eg. RCA re-configuration)

