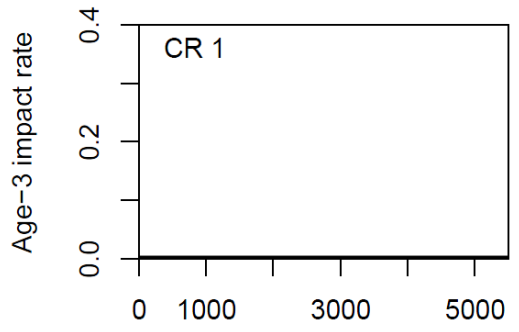
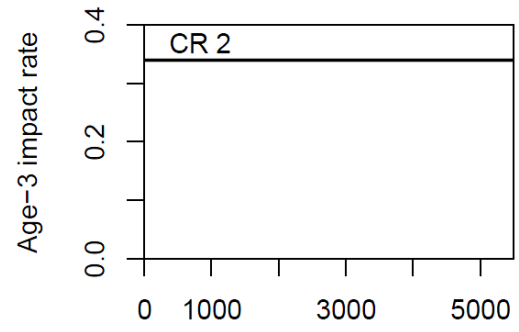


Ad hoc SRWC Workgroup analysis of control rules

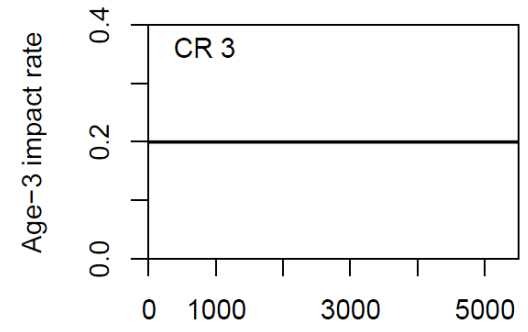
- Evaluated 9 control rules
 - Population effects
 - Fishery effects
- New and updated MSE results
 - Additional simulations under a variable environment
 - Evaluation of median vs. mode of forecast distribution
 - Minimum spawner abundance
 - Population response following low abundance



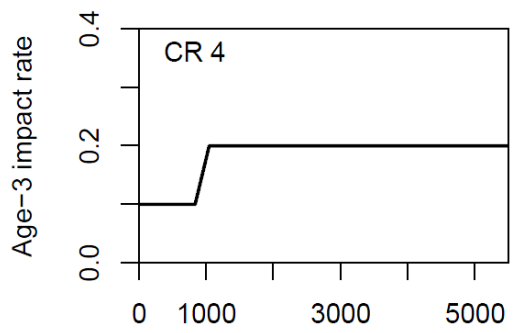
Age-3 escapement absent fishing



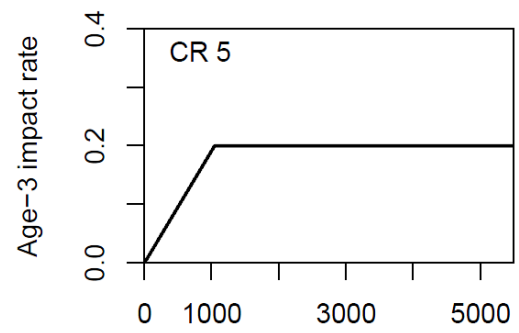
Age-3 escapement absent fishing



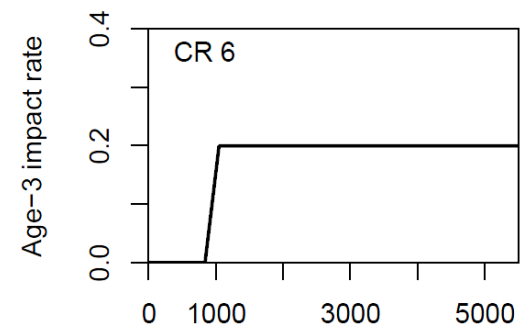
Age-3 escapement absent fishing



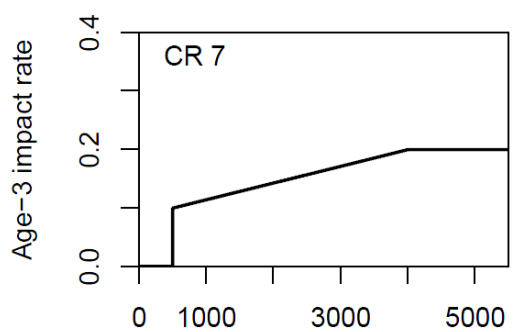
Age-3 escapement absent fishing



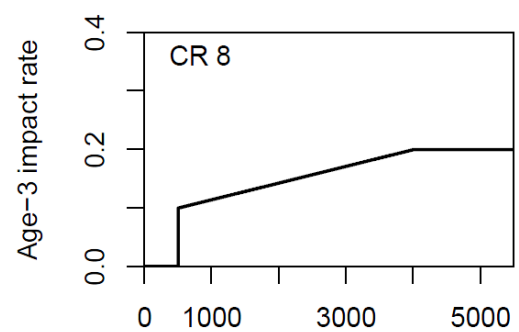
Age-3 escapement absent fishing



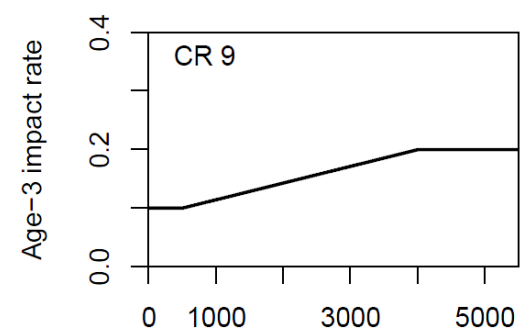
Age-3 escapement absent fishing



Age-3 escapement absent fishing

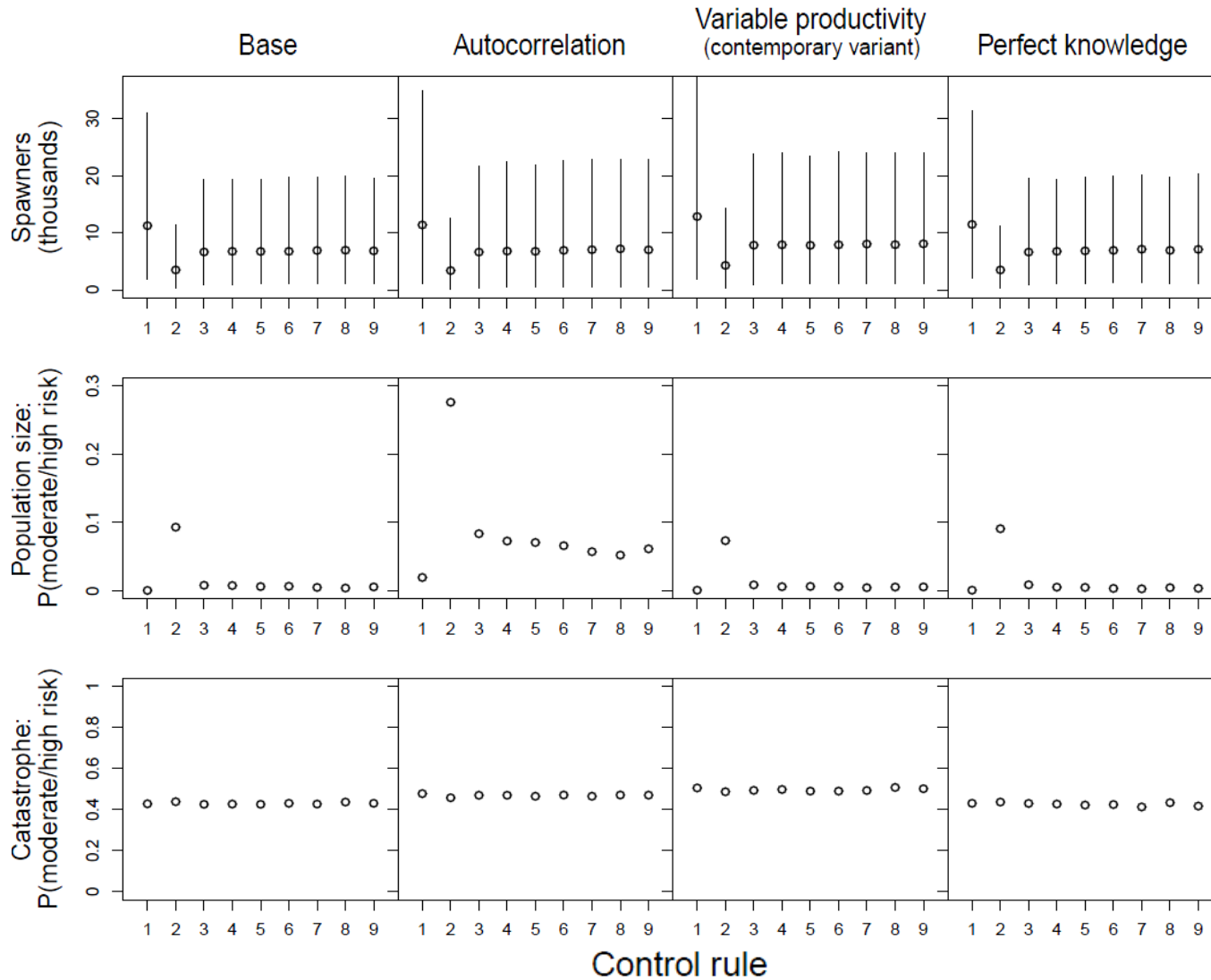


3-year geometric mean escapement

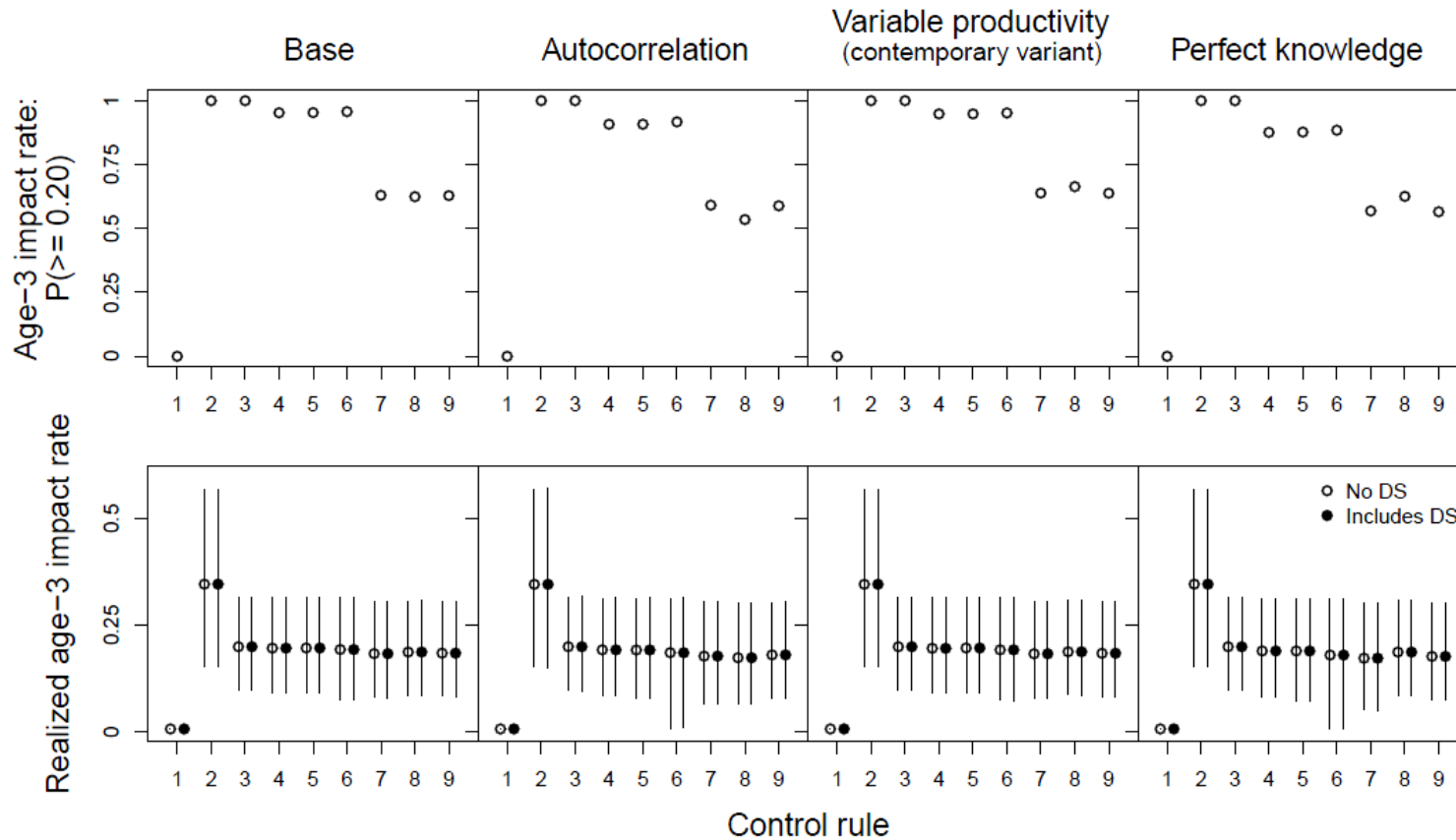


Age-3 escapement absent fishing

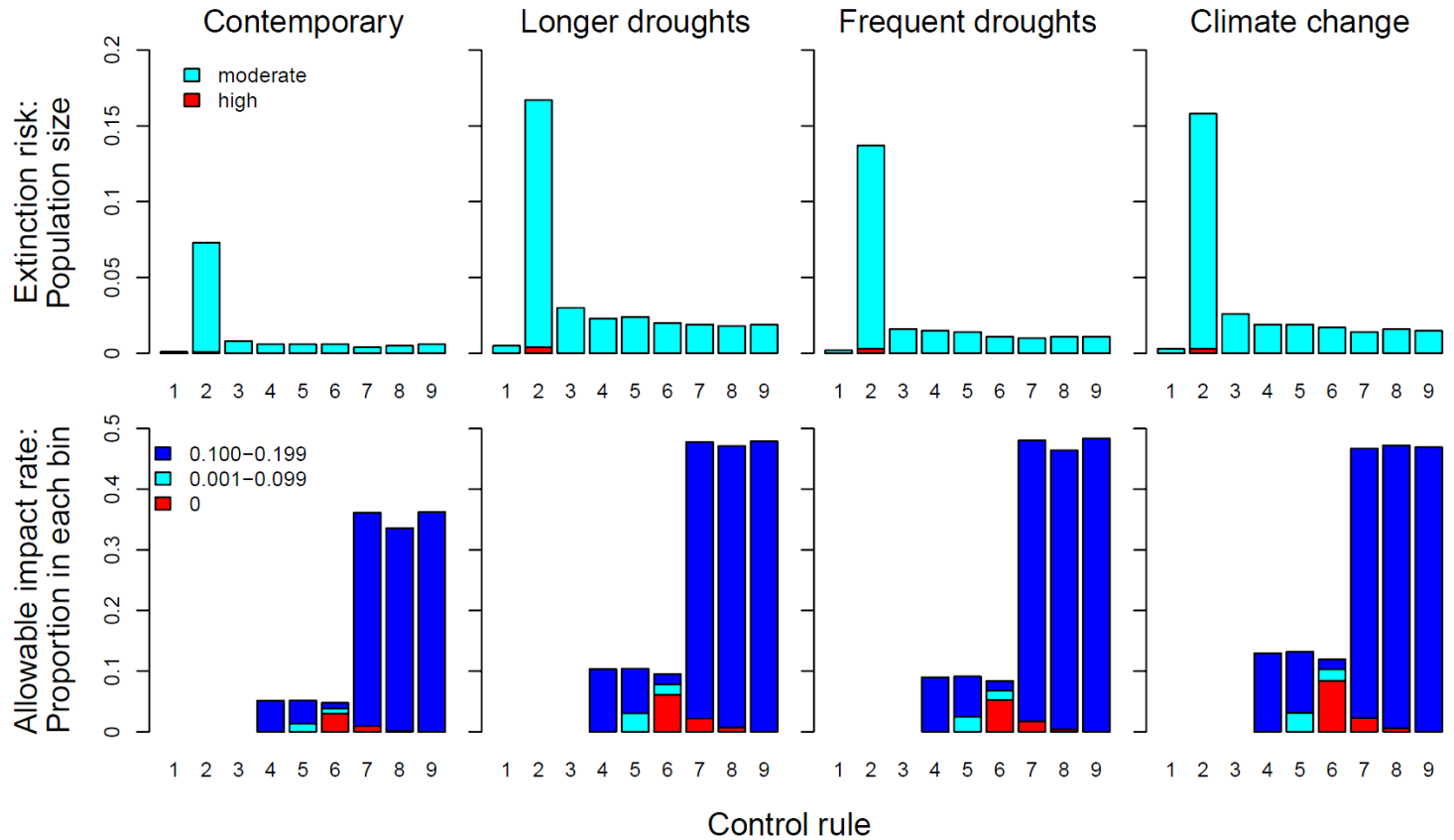
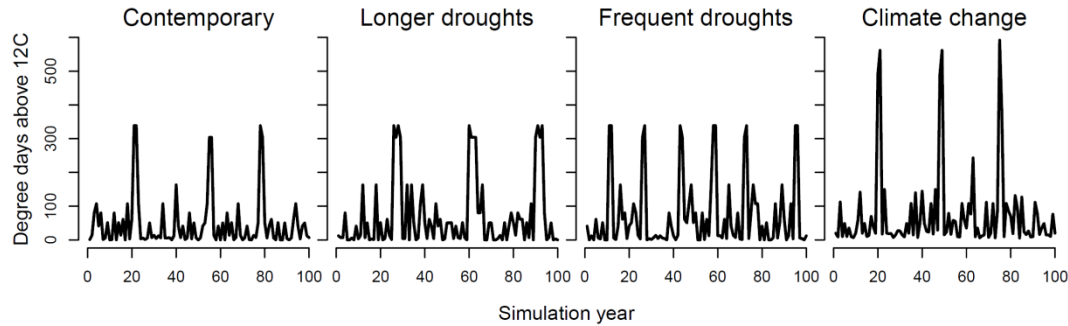
Population results



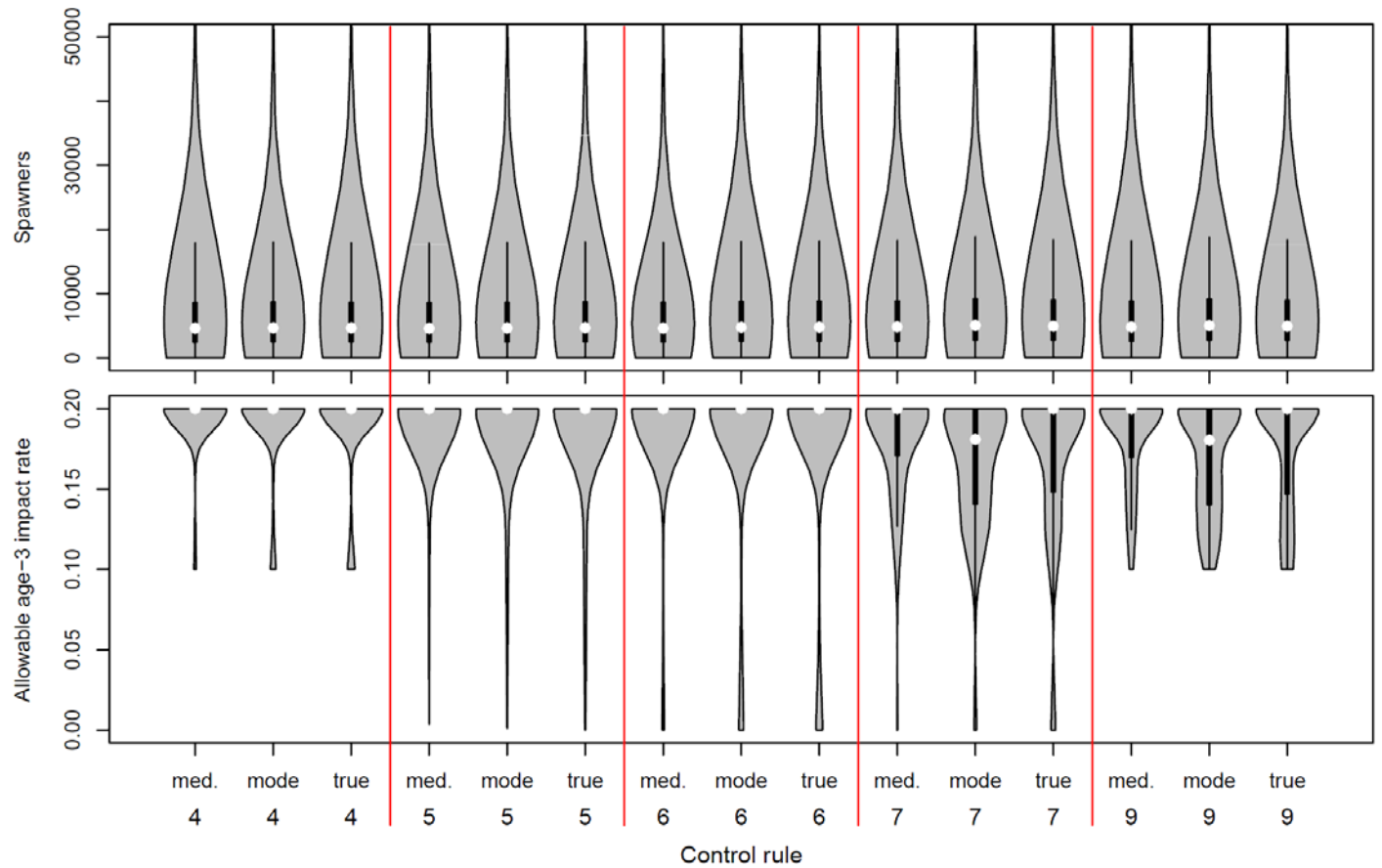
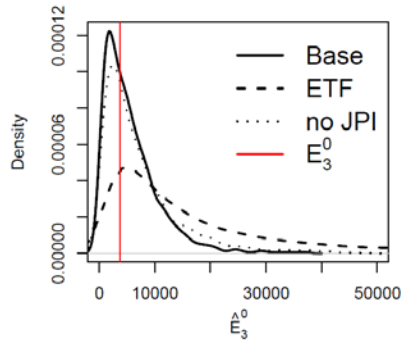
Fishery results



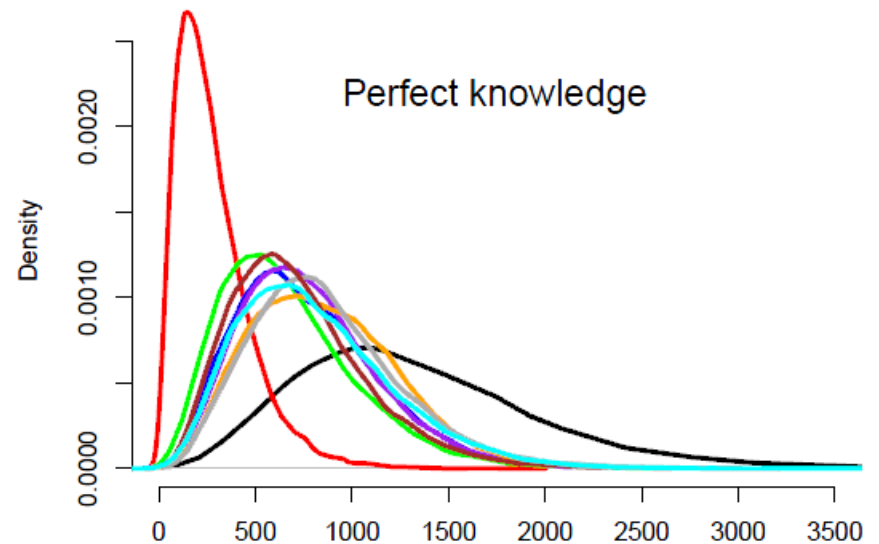
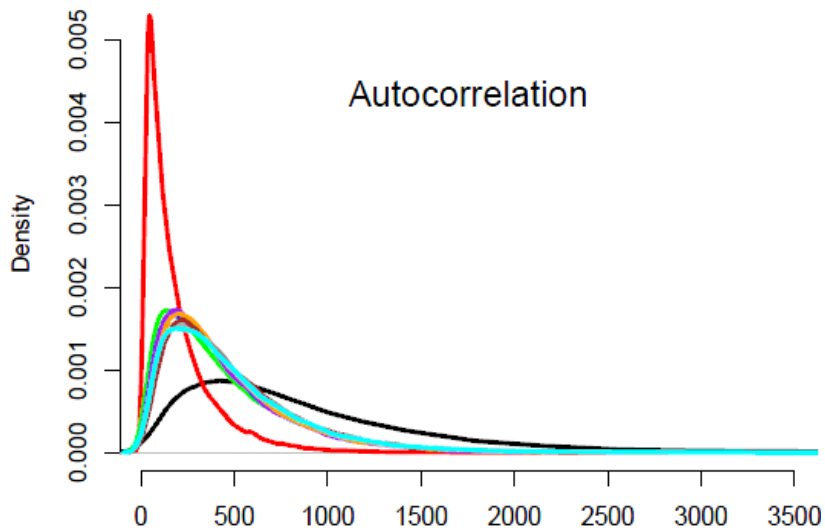
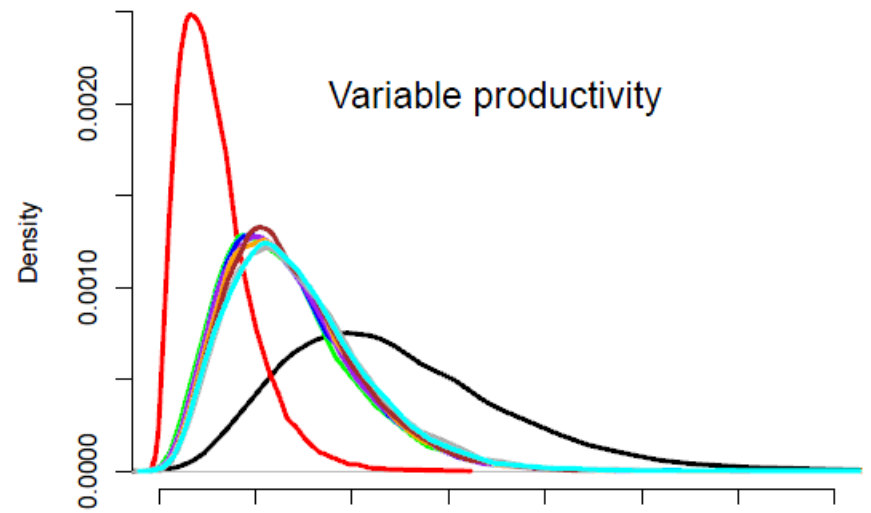
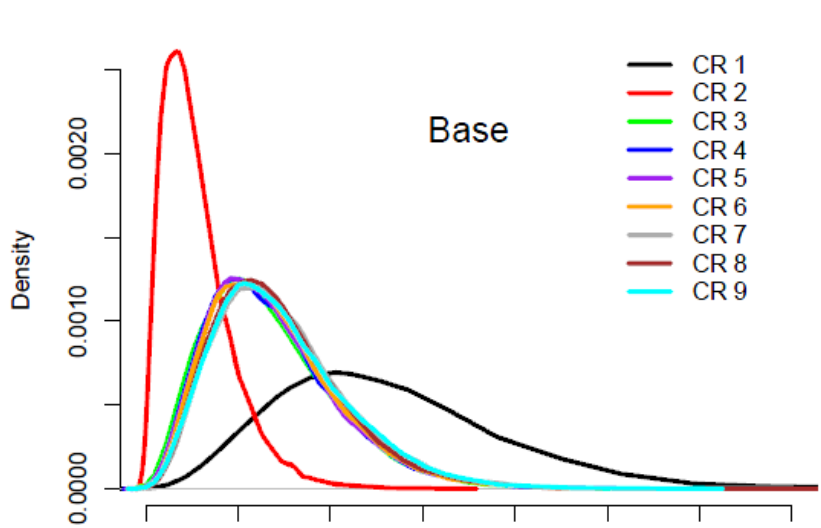
Variable productivity



Control rule input: median vs. mode

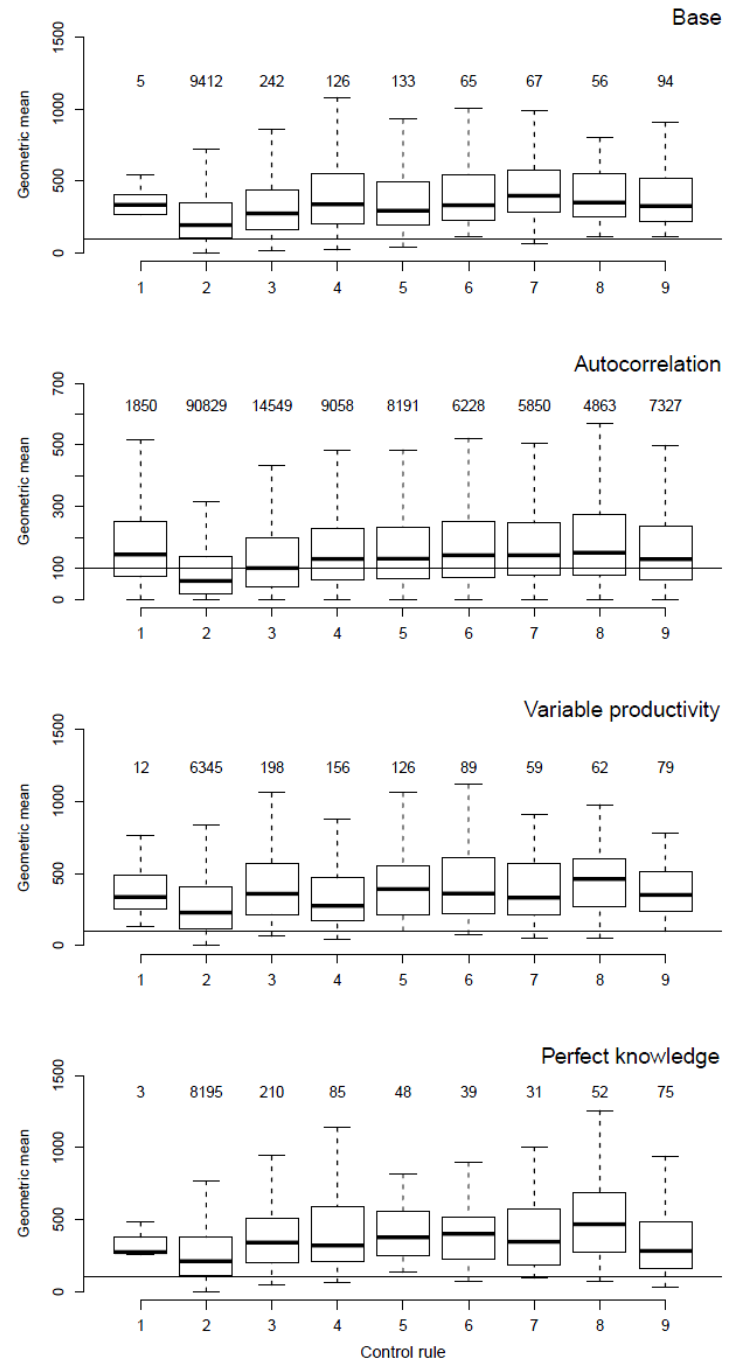


Minimum number of spawners



Minimum number of spawners

Population response to crossing a low abundance threshold



Core results:

- Modest population differences between CR 4-9
 - Mean spawners
 - Extinction risk
- Notable fishery differences between CR 4-9
 - More frequent constraints for CR 7-9 than CR 4-6
 - Differences in the degree of constraint
- Lower and more variable productivity
 - Higher extinction risks
 - Some extinction risk contrast between control rules
 - Lower risk for CR 7-9 vs. CR 4-5 (and sometimes 6)
 - Pattern of fishery effects similar to Base simulations