

APPENDIX 1

**ECONOMIC STATUS
OF
WASHINGTON, OREGON, AND CALIFORNIA
CPS FISHERIES
IN 2004**

See Chapter 12 for additional information.

Dr. Sam Herrick – National Marine Fisheries Service, Southwest Fisheries Science Center
Ms. Donna Dealy – National Marine Fisheries Service, Southwest Fisheries Science Center

June 2005

Table 1. Pacific coast landings (mt) and real¹ exvessel revenues (\$ 2004) for Pacific sardine, Pacific mackerel², jack mackerel, anchovy and market squid by landing area, 1981-2004. (Page 1 of 5)

Year	Landings (mt)					Exvessel Revenues (2004 \$)				
	Sardine	P. Mackerel	J. Mackerel	Anchovy	Squid	Sardine	P. Mackerel	J. Mackerel	Anchovy	Squid
San Diego										
1981	<1	13	12	2	4	\$16,907	\$7,439	\$1,198		\$3,301
1982	<1	30	<1	<1	<1	\$22,978	\$225			\$37
1983	<1	18	<1	2	1	\$15,906	\$884	\$1,139		\$1,190
1984	<1	27	<1	<1	<1	\$421	\$20,840	\$658		\$40
1985	<1	19	<1	<1	<1	\$26,025	\$135			\$223
1986	<1	9	<1	<1	<1	\$9,118	\$318			\$18
1987	<1	10	<1	<1	3	\$50	\$11,376	\$1,429	\$17	\$2,123
1988	<1	17	<1	6	19	\$78	\$17,124	\$1	\$4,619	\$10,106
1989	<1	8	<1	94	2	\$216	\$8,776	\$20	\$282,843	\$3,052
1990	<1	8	<1	18	1	\$257	\$7,568	\$82	\$53,267	\$1,435
1991	<1	11	<1	400	<1		\$9,994	\$101	\$131,349	
1992	<1	17	1	121	16	\$222	\$17,536	\$1,198	\$26,516	\$4,526
1993	<1	16	3	4	<1	\$649	\$16,213	\$3,207	\$1,271	\$47
1994	2	21	5	28	<1	\$1,048	\$16,326	\$3,071	\$11,609	\$259
1995	5	31	<1	38	<1	\$4,818	\$20,429	\$515	\$23,918	\$681
1996	1	26	<1	145	2	\$1,285	\$17,897		\$77,811	\$528
1997	3	16	<1	12	3	\$3,360	\$11,361	\$2	\$6,258	\$816
1998	215	52	<1	2	2	\$22,576	\$9,737		\$1,144	\$1,715
1999	592	15	<1	2	4	\$66,199	\$5,048	\$138	\$735	\$4,977
2000	19	2	<1	4	35	\$7,937	\$2,316	\$246	\$1,876	\$11,431
2001	<1	3	<1	2	11	\$105	\$2,684	\$117	\$785	\$4,887
2002	91	<1	<1	5	<1	\$61,863	\$933	\$118	\$3,222	
2003	28	<1	3	14	<1	\$22,093	\$994	\$3,263	\$8,275	
2004	44	<1	<1	<1	14	\$26,428	\$265			\$6,410
Orange/LA										
1981	15	29,085	14,700	38,216	8,291	\$5,511	\$11,042,923	\$5,524,367	\$4,270,706	\$1,761,682
1982	2	29,828	18,131	32,515	4,293	\$854	\$10,338,021	\$6,370,544	\$2,629,763	\$996,409
1983	<1	33,902	6,786	900	854	\$268	\$11,238,936	\$2,289,485	\$169,506	\$540,861
1984	<1	35,573	3,566	205	66	\$542	\$11,562,515	\$1,126,268	\$130,655	\$58,813
1985	3	32,013	5,860	43	3,096	\$1,265	\$8,924,240	\$1,698,778	\$27,240	\$1,582,228
1986	287	41,072	4,289	141	8,122	\$91,815	\$10,503,724	\$1,117,346	\$32,617	\$2,797,167
1987	317	39,863	7,801	109	5,422	\$68,253	\$8,481,002	\$1,697,562	\$29,699	\$1,644,285
1988	1,172	47,657	4,939	93	15,090	\$222,333	\$11,041,556	\$1,093,471	\$24,958	\$4,435,174
1989	505	41,718	10,704	479	16,353	\$80,328	\$8,933,354	\$2,263,550	\$70,361	\$3,916,977
1990	1,179	37,124	2,936	193	9,798	\$193,246	\$6,577,014	\$515,512	\$41,842	\$1,829,963
1991	6,415	31,555	1,640	414	12,305	\$978,156	\$6,731,687	\$293,263	\$62,418	\$2,068,330
1992	13,849	18,072	1,096	137	1,701	\$1,717,492	\$4,875,687	\$272,730	\$33,506	\$325,929
1993	13,978	11,715	1,269	119	12,890	\$1,721,163	\$1,793,007	\$216,397	\$20,915	\$3,305,991
1994	9,032	9,842	2,460	137	11,231	\$1,129,161	\$1,635,408	\$325,934	\$19,781	\$2,864,177
1995	34,137	7,864	1,596	298	18,413	\$3,522,360	\$1,210,030	\$228,095	\$33,365	\$6,059,049
1996	23,923	8,765	2,054	239	14,994	\$2,512,252	\$1,308,559	\$317,237	\$28,506	\$5,059,891
1997	26,534	14,003	823	1,121	17,779	\$2,881,582	\$2,506,984	\$204,560	\$108,324	\$6,621,966
1998	31,702	18,150	1,012	338	228	\$3,211,881	\$2,580,556	\$358,477	\$41,589	\$146,780
1999	39,084	8,551	927	1,418	27,597	\$3,882,634	\$1,146,579	\$204,865	\$241,192	\$10,083,819
2000	39,181	21,631	1,210	1,279	44,840	\$4,538,623	\$3,125,808	\$244,506	\$158,367	\$12,294,751
2001	40,764	6,677	3,624	3,658	39,171	\$4,732,636	\$1,126,850	\$593,574	\$340,526	\$8,975,349
2002	39,308	3,368	1,004	1,206	28,137	\$3,982,276	\$507,099	\$210,281	\$105,668	\$6,682,400
2003	22,824	3,941	133	206	7,693	\$1,868,968	\$634,645	\$52,386	\$31,293	\$4,513,752
2004	23,816	3,018	1,027	149	10,504	\$2,257,005	\$499,290	\$248,615	\$36,499	\$4,845,511

Table 1. Pacific coast landings (mt) and real¹ exvessel revenues (\$ 2004) for Pacific sardine, Pacific mackerel², jack mackerel, anchovy and market squid by landing area, 1981-2004. (Page 2 of 5)

Year	Landings (mt)					Exvessel Revenues (2004 \$)				
	Sardine	P. Mackerel	J. Mackerel	Anchovy	Squid	Sardine	P. Mackerel	J. Mackerel	Anchovy	Squid
Ventura/Santa Barbara										
1981	<1	4,872	2,847	9,035	2,390	\$14	\$1,838,348	\$1,067,548	\$1,022,818	\$393,172
1982	<1	4,095	1,195	6,441	1,403		\$1,506,733	\$403,236	\$601,387	\$256,555
1983	<1	3,905	559	2,727	3	\$2	\$1,175,133	\$152,181	\$259,922	\$3,445
1984	<1	1,263	52	141	7		\$366,016	\$16,139	\$72,088	\$13,492
1985	<1	2,951	787	110	2,959		\$716,288	\$215,358	\$47,700	\$1,179,443
1986	18	5,005	297	161	6,412	\$4,565	\$1,216,709	\$79,256	\$64,374	\$1,622,681
1987	74	5,878	8	140	8,407	\$16,249	\$1,218,856	\$2,430	\$55,079	\$2,247,210
1988	13	3,120	7	154	16,334	\$4,200	\$1,022,452	\$1,603	\$66,968	\$4,878,185
1989	93	5,908	<1	161	16,862	\$14,731	\$766,004		\$71,083	\$4,155,195
1990	236	421	76	141	10,601	\$28,223	\$67,785	\$9,149	\$59,678	\$2,565,300
1991	186	138	9	190	16,905	\$27,437	\$19,448	\$1,220	\$75,659	\$3,173,422
1992	973	92	<1	90	2,807	\$87,146	\$9,574	\$3	\$35,853	\$559,053
1993	692	35	<1	298	17,367	\$63,163	\$4,432	\$10	\$102,787	\$4,479,614
1994	315	40	48	341	21,794	\$27,658	\$9,588	\$3,861	\$168,410	\$6,142,040
1995	355	249	<1	346	41,184	\$47,079	\$27,929	\$221	\$167,613	\$16,396,347
1996	461	67	11	375	46,435	\$44,592	\$34,601	\$1,818	\$172,286	\$14,044,462
1997	3,357	1,160	7	510	34,611	\$266,494	\$117,245	\$2,901	\$102,611	\$10,557,086
1998	899	1,306	<1	239	2,176	\$102,121	\$76,974		\$88,695	\$1,393,537
1999	2,545	215	<1	2,233	52,719	\$269,082	\$39,825	\$9	\$356,992	\$22,231,936
2000	3,048	230	9	3,548	48,747	\$320,418	\$23,277	\$944	\$423,947	\$10,818,588
2001	3,957	72	<1	3,909	31,876	\$390,309	\$7,018	\$32	\$476,343	\$5,596,175
2002	5,065	<1	<1	732	11,814	\$648,369	\$14	\$2	\$188,922	\$3,249,542
2003	2,366	39	<1	625	13,200	\$222,044	\$4,406	\$26	\$143,403	\$7,623,625
2004	4,860	67	<1	2,804	15,186	\$431,243	\$7,980	\$8	\$410,125	\$7,613,349
San Luis Obispo										
1981	<1	1	<1	17	<1		\$906	\$16	\$11,763	\$140
1982	<1	3	<1	<1	<1		\$2,051	\$9		\$414
1983	<1	<1	<1	<1	<1		\$533			\$216
1984	<1	5	<1	<1	<1		\$3,108			\$123
1985	<1	20	<1	48	<1	\$97	\$4,686	\$55	\$24,227	\$414
1986	<1	<1	<1	11	<1		\$321	\$17	\$4,717	\$128
1987	<1	<1	<1	2	<1		\$678		\$927	\$384
1988	<1	<1	<1	<1	<1	\$1	\$298			\$84
1989	<1	1	<1	<1	19		\$824	\$1	\$41	\$5,965
1990	121	2	17	<1	<1	\$14,452	\$1,137	\$1,956		\$73
1991	<1	1	<1	<1	<1		\$605	\$11		\$21
1992	<1	<1	<1	<1	<1		\$307	\$68		\$125
1993	<1	<1	<1	1	2,036		\$53	\$15	\$612	\$985,962
1994	<1	<1	<1	<1	1,344	\$30	\$114	\$5	\$432	\$697,741
1995	<1	<1	<1	<1	183		\$18	\$3		\$46,993
1996	<1	<1	<1	<1	217		\$6			\$71,190
1997	<1	<1	<1	23	<1	\$22	\$3		\$10,614	\$14
1998	<1	<1	<1	<1	<1	\$36	\$167	\$45		\$1
1999	<1	<1	<1	2	17		\$31		\$986	\$5,137
2000	<1	<1	<1	<1	<1		\$2	\$1		\$7
2001	<1	<1	<1	4	79		\$19		\$1,614	\$16,482
2002	102	<1	<1	<1	356	\$7,009				\$79,043
2003	<1	<1	<1	3	650		\$16	\$17	\$1,432	\$364,803
2004	<1	<1	<1	<1	906		\$12			\$444,752

Table 1. Pacific coast landings (mt) and real¹ exvessel revenues (\$ 2004) for Pacific sardine, Pacific mackerel², jack mackerel, anchovy and market squid by landing area, 1981-2004. (Page 3 of 5)

Year	Landings (mt)					Exvessel Revenues (2004 \$)				
	Sardine	P. Mackerel	J. Mackerel	Anchovy	Squid	Sardine	P. Mackerel	J. Mackerel	Anchovy	Squid
Monterey/Santa Cruz										
1981	<1	1,359	212	4,617	12,823		\$409,102	\$82,729	\$495,492	\$7,136,453
1982	<1	2,053	280	2,609	10,607	\$74	\$639,832	\$96,564	\$242,646	\$4,975,895
1983	<1	3,449	2,457	321	500	\$21	\$833,426	\$509,968	\$71,024	\$367,514
1984	<1	7,149	5,481	1,895	391	\$427	\$1,267,451	\$1,030,992	\$181,238	\$323,554
1985	2	2,704	228	1,138	3,813	\$833	\$513,220	\$91,400	\$136,545	\$3,057,825
1986	85	1,988	191	808	5,488	\$27,831	\$362,529	\$87,925	\$222,035	\$2,022,464
1987	48	957	210	676	5,611	\$7,787	\$174,155	\$48,581	\$115,237	\$1,797,127
1988	3	59	122	696	4,897	\$1,094	\$25,880	\$42,308	\$241,090	\$1,646,952
1989	238	60	37	929	7,146	\$173,345	\$16,758	\$40,670	\$184,625	\$2,168,898
1990	127	2,496	192	2,132	7,918	\$27,301	\$415,925	\$49,638	\$424,568	\$1,860,909
1991	986	298	44	2,527	6,703	\$138,928	\$66,711	\$20,799	\$368,732	\$2,096,495
1992	3,093	375	110	608	6,111	\$512,239	\$95,568	\$23,140	\$98,057	\$1,582,990
1993	676	38	345	1,285	6,040	\$106,699	\$15,931	\$104,614	\$289,990	\$2,442,062
1994	2,289	38	191	986	13,648	\$656,778	\$21,175	\$114,475	\$296,690	\$5,395,012
1995	5,678	461	109	1,111	2,449	\$593,391	\$74,000	\$91,068	\$107,375	\$962,725
1996	7,988	703	91	3,554	4,672	\$1,023,819	\$105,886	\$15,199	\$426,558	\$1,586,826
1997	13,357	3,208	327	3,895	8,283	\$1,806,681	\$488,856	\$70,260	\$632,396	\$3,316,478
1998	10,009	1,457	33	901	<1	\$687,236	\$159,244	\$12,391	\$75,680	
1999	16,417	3	24	1,511	301	\$1,322,327	\$11,057	\$1,932	\$371,602	\$88,117
2000	11,367	39	50	6,804	7,125	\$1,048,903	\$6,893	\$29,169	\$859,134	\$2,075,668
2001	7,103	172	<1	11,660	7,747	\$1,515,832	\$19,997		\$601,565	\$1,874,720
2002	13,607	<1	2	2,690	25,067	\$1,349,411	\$75	\$403	\$265,276	\$7,063,319
2003	7,907	1	20	706	13,921	\$681,235	\$4,306	\$2,519	\$83,697	\$8,088,239
2004	15,444	490	<1	3,891	5,543	\$1,196,606	\$52,691	\$5	\$290,709	\$2,852,444
San Francisco										
1981	<1	<1	2	204	<1	\$1	\$49	\$1,559	\$86,155	\$13
1982	<1	4	<1	395	2		\$2,286	\$276	\$183,389	\$916
1983	<1	13	1	332	462		\$4,876	\$346	\$125,190	\$338,910
1984	<1	14	<1	538	97		\$9,051	\$150	\$219,857	\$86,521
1985	<1	15	<1	259	77		\$12,378	\$40	\$101,567	\$52,761
1986	<1	12	<1	393	832		\$8,339		\$139,566	\$331,138
1987	<1	6	<1	424	343	\$96	\$5,210	\$616	\$155,899	\$117,662
1988	<1	6	<1	492	299	\$5	\$5,263	\$412	\$175,152	\$97,227
1989	<1	9	4	755	3	\$17	\$7,424	\$4,206	\$223,922	\$2,006
1990	<1	14	2	714	129	\$38	\$9,379	\$968	\$203,270	\$40,849
1991	<1	3	<1	459	1,471		\$1,919	\$89	\$138,535	\$444,003
1992	35	12	1	164	2,448	\$7,618	\$11,903	\$433	\$43,108	\$587,751
1993	<1	1	<1	244	1,018		\$1,215	\$253	\$133,436	\$460,557
1994	<1	2	<1	280	2,236	\$688	\$1,862	\$337	\$99,651	\$767,773
1995	2	<1	<1	93	747	\$566	\$627	\$278	\$10,282	\$255,316
1996	<1	5	<1	105	333		\$2,804	\$654	\$28,654	\$124,585
1997	3	4	<1	156	205	\$1,467	\$2,679	\$405	\$12,073	\$78,551
1998	464	4	1	<1	14	\$34,910	\$3,931	\$914	\$22	\$17,389
1999	949	<1	<1	47	5	\$89,995	\$636	\$32	\$16,209	\$1,958
2000	<1	<1	<1	117	<1	\$226	\$22	\$734	\$68,660	\$4
2001	<1	<1	<1	42	280	\$100	\$1,753		\$14,197	\$78,270
2002	172	<1	<1	17	865	\$33,225	\$2		\$9,842	\$223,287
2003	<1	<1	<1	<1	2,808	\$515	\$147	\$2		\$1,580,097
2004	367	<1	<1	<1	165	\$34,146	\$119	\$6	\$27	\$90,849

Table 1. Pacific coast landings (mt) and real¹ exvessel revenues (\$ 2004) for Pacific sardine, Pacific mackerel², jack mackerel, anchovy and market squid by landing area, 1981-2004. (Page 4 of 5)

Year	Landings (mt)					Exvessel Revenues (2004 \$)				
	Sardine	P. Mackerel	J. Mackerel	Anchovy	Squid	Sardine	P. Mackerel	J. Mackerel	Anchovy	Squid
Northern California										
1981	<1	2	<1	<1	2		\$921	\$16		\$1,826
1982	<1	3	1	<1	2		\$954	\$499		\$1,569
1983	<1	3	<1	<1	<1		\$1,322	\$28		\$54
1984	<1	<1	<1	<1	<1		\$70	\$2	\$960	\$134
1985	<1	<1	<1	<1	<1					\$19
1986	<1	<1	<1	<1	<1		\$30			\$19
1987	<1	<1	<1	<1	<1		\$15	\$3		\$59
1988	<1	<1	<1	<1	1			\$3		\$912
1989	<1	<1	<1	<1	<1		\$61	\$1		\$504
1990	<1	<1	<1	<1	<1		\$231			\$191
1991	<1	<1	<1	<1	1		\$57			\$548
1992	<1	<1	1	<1	<1		\$422	\$568	\$119	\$1,387
1993	<1	<1	55	<1	<1		\$138	\$9,437	\$30	\$7
1994	5	<1	<1	8	38	\$1,744	\$190	\$80	\$3,437	\$12,560
1995	2	<1	<1	<1	2	\$998	\$35	\$38		\$545
1996	<1	3	<1	<1	<1	\$134	\$1,975			
1997	<1	6	2	<1	3		\$3,563	\$1,383		\$2,239
1998	21	9	6	<1	<1	\$4,884	\$3,701	\$4,498		\$47
1999	<1	3	<1	<1	<1		\$854	\$15		\$6
2000	<1	2	<1	<1	<1		\$363	\$97		\$628
2001	<1	<1	<1	2	<1	\$42			\$6,705	\$88
2002	<1	<1	<1	<1	4		\$497	\$37		\$1,345
2003	14	<1	<1	<1	<1	\$6,069		\$14		
2004	24	<1	<1	<1	<1	\$10,390	\$71	\$4		\$48
Other California										
1981	<1	<1	<1	<1	<1		\$14			
1982										
1983										
1984	<1	<1	<1	<1	<1		\$28			
1985										
1986	<1	<1	<1	<1	<1		\$98			
1987										
1988										
1989	<1	<1	<1	<1	<1		\$9			
1990										
1991										
1992										
1993										
1994	<1	4	<1	4	33		\$11,106		\$292	\$8,634
1995										
1996										
1997										
1998										
1999										
2000										
2001										
2002										
2003										
2004										

Table 1. Pacific coast landings (mt) and real¹ exvessel revenues (\$ 2004) for Pacific sardine, Pacific mackerel², jack mackerel, anchovy and market squid by landing area, 1981-2004. (Page 5 of 5)

Year	Landings (mt)					Exvessel Revenues (2004 \$)				
	Sardine	P. Mackerel	J. Mackerel	Anchovy	Squid	Sardine	P. Mackerel	J. Mackerel	Anchovy	Squid
Oregon										
1981	<1	<1	<1	<1	<1		\$2			
1982	<1	<1	<1	<1	<1		\$71		\$172	
1983	<1	8	<1	<1	<1		\$12,955			
1984	<1	3	<1	<1	<1		\$1,292			
1985	<1	<1	<1	<1	<1		\$3	\$2	\$60	
1986	<1	<1	<1	<1	<1		\$1			
1987	<1	2	<1	<1	<1		\$769			
1988	<1	<1	<1	<1	<1		\$491		\$19	
1989	<1	5	<1	<1	<1		\$1,545		\$21	
1990	<1	10	<1	<1	<1		\$4,777			
1991	<1	<1	19	<1	<1		\$198	\$3,108		
1992	4	462	317	<1	<1		\$194	\$999		
1993	<1	280	277	<1	<1		\$1,050	\$3,257		
1994	<1	252	202	<1	<1		\$11,523	\$9,286	\$240	
1995	<1	189	149	<1	<1		\$4,186	\$8,449	\$570	
1996	<1	61	259	<1	<1		\$4,410	\$8,842		
1997	<1	1,611	373	<1	<1		\$2,596	\$852		
1998	1	536	686	<1	<1	\$870	\$9,689	\$49,085		
1999	776	259	518	<1	<1	\$94,989	\$1,115	\$6,587		
2000	9,528	119	161	<1	<1	\$1,244,014	\$6,814	\$18,654	\$325	
2001	12,780	322	183	<1	<1	\$1,684,035	\$75,127	\$46,920		
2002	22,711	127	9	3	<1	\$2,931,565	\$6,723	\$3,981	\$1,848	
2003	25,258	160	74	39	<1	\$3,003,216	\$19,030	\$16,248	\$3,177	
2004	36,111	107	126	13	<1	\$4,869,916	\$11,236	\$17,262	\$4,633	
Washington										
1981	<1	<1	<1	1	<1				\$541	
1982	<1	<1	<1	5	<1				\$16,358	
1983	<1	<1	<1	3	<1				\$8,922	
1984	<1	<1	<1	10	<1		\$137		\$16,008	
1985	<1	<1	<1	12	<1				\$18,367	
1986	<1	<1	<1	22	<1				\$30,113	
1987	<1	<1	<1	78	<1				\$86,847	
1988	<1	<1	<1	40	<1				\$46,642	
1989	<1	<1	<1	62	<1		\$69		\$74,530	
1990	<1	<1	<1	50	<1		\$207		\$55,448	
1991	<1	<1	<1	55	<1		\$51		\$47,785	
1992	<1	6	<1	42	<1		\$3,469		\$41,308	
1993	<1	30	<1	20	<1		\$5,094		\$13,295	
1994	<1	33	<1	39	<1		\$3,525		\$32,598	
1995	<1	8	<1	118	<1		\$960		\$76,825	
1996	<1	65	3	86	<1		\$22,944	\$790	\$73,106	
1997	<1	153	<1	59	<1		\$19,077	\$90	\$47,219	
1998	<1	46	39	103	<1		\$4,610	\$3,940	\$67,897	
1999	1	47	108	98	<1	\$1,825	\$4,051	\$8,404	\$73,322	
2000	4,842	19	20	79	<1	\$718,167	\$2,113	\$2,409	\$51,681	
2001	11,127	371	32	68	<1	\$1,309,968	\$81,659	\$5,761	\$73,492	
2002	15,833	248	12	229	<1	\$2,014,037	\$30,601	\$1,870	\$73,414	
2003	11,920	54	2	214	<1	\$1,500,958	\$10,545	\$121	\$67,335	
2004	8,934	22	7	213	<1	\$1,244,976	\$2,337	\$3,246	\$63,910	

Source: PacFIN - 1981-2001 data extracted April 2004, 2002-2004 data extracted May 2005

¹Real values are current values adjusted to eliminate the effects of inflation. This adjustment has been made by dividing current values by the current year GDP implicit price deflator, with a base year of 2004.

²Pacific mackerel landings and revenues also include landings and revenues of unspecified mackerel.

Table 2. Average annual real¹ exvessel prices (\$ 2004) for Pacific sardine, Pacific mackerel², jack mackerel, anchovy and market squid, 1981-2004.

Year	Pacific Sardine \$/lb	Pacific Mackerel \$/lb	Jack Mackerel \$/lb	Anchovy \$/lb	Squid \$/lb
1981	\$0.17	\$0.17	\$0.17	\$0.05	\$0.18
1982	\$0.21	\$0.16	\$0.16	\$0.04	\$0.17
1983	\$0.13	\$0.15	\$0.14	\$0.07	\$0.31
1984	\$0.63	\$0.14	\$0.11	\$0.10	\$0.39
1985	\$0.17	\$0.12	\$0.13	\$0.10	\$0.27
1986	\$0.15	\$0.11	\$0.12	\$0.15	\$0.15
1987	\$0.10	\$0.10	\$0.10	\$0.14	\$0.13
1988	\$0.09	\$0.11	\$0.10	\$0.17	\$0.14
1989	\$0.15	\$0.09	\$0.10	\$0.17	\$0.11
1990	\$0.07	\$0.08	\$0.08	\$0.12	\$0.10
1991	\$0.07	\$0.10	\$0.08	\$0.09	\$0.09
1992	\$0.06	\$0.12	\$0.09	\$0.11	\$0.11
1993	\$0.06	\$0.07	\$0.08	\$0.13	\$0.13
1994	\$0.07	\$0.08	\$0.07	\$0.16	\$0.14
1995	\$0.05	\$0.07	\$0.08	\$0.10	\$0.17
1996	\$0.05	\$0.07	\$0.07	\$0.08	\$0.14
1997	\$0.05	\$0.07	\$0.08	\$0.07	\$0.15
1998	\$0.04	\$0.06	\$0.11	\$0.08	\$0.29
1999	\$0.04	\$0.06	\$0.06	\$0.09	\$0.18
2000	\$0.05	\$0.07	\$0.09	\$0.06	\$0.11
2001	\$0.06	\$0.08	\$0.08	\$0.04	\$0.09
2002	\$0.05	\$0.07	\$0.10	\$0.06	\$0.12
2003	\$0.05	\$0.07	\$0.15	\$0.08	\$0.26
2004	\$0.05	\$0.07	\$0.11	\$0.05	\$0.22

Source: PacFIN - 1981-2001 data extracted April 2004, 2002-2004 data extracted May 2005

¹Real values are current values adjusted to eliminate the effects of inflation. This adjustment has been made by dividing current values by the current year GDP implicit price deflator, with a base year of 2004.

²Pacific mackerel landings and revenues also include landings and revenues of unspecified mackerel.

Table 3. West coast landings (mt) and real¹ exvessel revenues (\$ 2004) for Pacific sardine, Pacific mackerel², jack mackerel, anchovy and market squid by state, 1981-2004. (Page 1 of 3)

Year	Pacific Sardine mt	Pacific Sardine Rev	Pacific Mackerel mt	Pacific Mackerel Rev	Jack Mackerel mt	Jack Mackerel Rev	Anchovy mt	Anchovy Rev	Squid mt	Squid Rev
California										
1981	15	\$5,526	35,388	\$13,333,138	17,778	\$6,687,721	52308	\$5,992,577	23,510	\$9,296,677
1982	2	\$929	36,065	\$12,534,404	19,617	\$6,875,844	42150	\$3,719,237	16,308	\$6,232,688
1983	1	\$290	41,471	\$13,321,062	9,829	\$2,976,475	4427	\$683,863	1,824	\$1,256,370
1984	1	\$1,390	44,081	\$13,250,584	9,149	\$2,188,152	2889	\$647,615	564	\$485,062
1985	6	\$2,195	37,772	\$10,222,545	6,876	\$2,005,948	1626	\$347,657	10,276	\$6,166,362
1986	388	\$124,210	48,089	\$12,102,810	4,777	\$1,284,956	1535	\$470,749	21,278	\$6,872,691
1987	439	\$92,454	46,724	\$9,894,368	8,020	\$1,750,621	1390	\$371,364	19,984	\$5,854,539
1988	1,188	\$227,740	50,863	\$12,116,167	5,068	\$1,137,858	1478	\$526,400	37,232	\$11,250,640
1989	837	\$268,892	47,708	\$9,739,023	10,745	\$2,308,504	2449	\$846,357	40,893	\$10,368,541
1990	1,664	\$263,649	40,081	\$7,091,592	3,223	\$577,310	3208	\$787,169	28,447	\$6,298,996
1991	7,587	\$1,144,521	32,018	\$6,837,649	1,693	\$315,597	4014	\$784,782	37,389	\$7,784,214
1992	17,950	\$2,324,733	18,577	\$5,016,714	1,209	\$298,374	1124	\$238,919	13,110	\$3,067,625
1993	15,346	\$1,892,460	11,819	\$1,839,534	1,673	\$333,973	1959	\$552,093	42,830	\$12,575,870
1994	11,644	\$1,817,106	10,008	\$1,708,040	2,704	\$447,769	1789	\$603,065	55,892	\$17,187,458
1995	40,256	\$4,179,831	8,626	\$1,346,522	1,728	\$334,457	1886	\$342,626	70,252	\$26,204,233
1996	32,553	\$3,634,771	9,604	\$1,491,767	2,177	\$342,401	4419	\$734,680	80,561	\$25,212,878
1997	43,290	\$5,038,819	18,401	\$3,133,716	1,160	\$279,511	5719	\$873,194	70,329	\$23,432,646
1998	43,311	\$4,063,721	20,978	\$2,834,490	1,052	\$376,326	1481	\$207,130	2,895	\$1,821,764
1999	59,591	\$5,630,557	8,788	\$1,204,054	952	\$207,508	5214	\$987,723	92,014	\$36,911,125
2000	53,664	\$5,923,971	21,904	\$3,158,888	1,269	\$275,699	11752	\$1,512,064	118,903	\$29,486,376
2001	51,893	\$6,646,384	6,925	\$1,158,705	3,624	\$593,824	19277	\$1,441,734	86,203	\$17,898,926
2002	58,353	\$6,083,277	3,369	\$508,700	1,005	\$210,847	4650	\$572,930	72,878	\$18,985,897
2003	34,686	\$2,931,755	3,999	\$646,402	156	\$58,227	1676	\$278,629	44,990	\$25,889,634
2004	44,578	\$3,959,582	3,579	\$561,375	1,027	\$248,653	6877	\$751,636	39,596	\$19,486,285

Table 3. West coast landings (mt) and real¹ exvessel revenues (\$ 2004) for Pacific sardine, Pacific mackerel², jack mackerel, anchovy and market squid by state, 1981-2004. (Page 2 of 3)

Year	Pacific Sardine mt	Pacific Sardine Rev	Pacific Mackerel mt	Pacific Mackerel Rev	Jack Mackerel mt	Jack Mackerel Rev	Anchovy mt	Anchovy Rev	Squid mt	Squid Rev
Oregon										
1981			<1	\$2						
1982			<1	\$71			<1	\$172		
1983			8	\$12,955						
1984			3	\$1,292						
1985			<1	\$3	<1	\$2	<1	\$60		
1986			<1	\$1						
1987			1	\$769						
1988			1	\$491			<1	\$19		
1989			5	\$1,545			<1	\$21		
1990			10	\$4,790						
1991			<1	\$198	19	\$3,108				
1992			462	\$194	317	\$1,001				
1993			280	\$1,050	277	\$3,257				
1994			252	\$11,523	202	\$9,286	1	\$240		
1995			189	\$4,186	149	\$8,449	<1	\$570		
1996			61	\$4,410	259	\$8,842				
1997			1,611	\$2,596	373	\$852				
1998	1	\$870	536	\$9,689	686	\$49,085				
1999	776	\$94,989	259	\$1,115	518	\$6,587				
2000	9,528	\$1,244,014	119	\$6,814	161	\$18,654	<1	\$325		
2001	12,780	\$1,684,035	322	\$75,127	183	\$46,920				
2002	22,711	\$2,931,565	127	\$6,723	9	\$3,981	3	\$1,848		
2003	25,258	\$3,003,216	160	\$19,030	74	\$16,248	39	\$3,177		
2004	36,111	\$4,869,916	107	\$11,236	126	\$17,262	13	\$4,633		

Table 3. West coast landings (mt) and real¹ exvessel revenues (\$ 2004) for Pacific sardine, Pacific mackerel², jack mackerel, anchovy and market squid by state, 1981-2004. (Page 3 of 3)

Year	Pacific Sardine mt	Pacific Sardine Rev	Pacific Mackerel mt	Pacific Mackerel Rev	Jack Mackerel mt	Jack Mackerel Rev	Anchovy mt	Anchovy Rev	Squid mt	Squid Rev
					Washington					
1981							1	\$541		
1982							5	\$16,358		
1983							3	\$8,922		
1984			<1	\$137			10	\$16,008		
1985							12	\$18,367		
1986							22	\$30,113		
1987							78	\$86,847		
1988							40	\$46,642		
1989			<1	\$69			62	\$74,530		
1990			<1	\$207			50	\$55,448		
1991			<1	\$51			54	\$47,785		
1992			6	\$3,469			42	\$41,308		
1993			30	\$5,094			44	\$33,151		
1994			33	\$3,525			70	\$57,703		
1995			7	\$960			130	\$90,010		
1996			65	\$22,944	3	\$790	86	\$73,106		
1997			156	\$19,678	1	\$90	59	\$47,219		
1998			46	\$4,616	39	\$3,940	103	\$67,897		
1999	1	\$1,825	47	\$4,051	108	\$8,404	98	\$73,322		
2000	4,842	\$718,167	19	\$2,113	20	\$2,409	79	\$51,681		
2001	11,127	\$1,309,968	371	\$81,673	32	\$5,761	68	\$73,492		
2002	15,833	\$2,014,037	248	\$30,601	12	\$1,870	229	\$73,414		
2003	11,920	\$1,500,958	54	\$10,545	2	\$121	214	\$67,335		
2004	8,934	\$1,244,976	22	\$2,337	7	\$3,246	213	\$63,910		

Source: PacFIN - 1981-2001 data extracted April 2004, 2002-2004 data extracted May 2005

¹Real values are current values adjusted to eliminate the effects of inflation. This adjustment has been made by dividing current values by the current year GDP implicit price deflator, with a base year of 2004.

²Pacific mackerel landings and revenues also include landings and revenues of unspecified mackerel.

Table 4. Pacific coast CPS landings (mt) and real¹ exvessel revenues (\$ 2004) by gear group, 1981-2004.

Year	Roundhaul or Lampara	Dip Net	Pot or Trap	Trawl	Hook and Line	Gillnet	Other or Unknown
Landings (metric tons)							
1981	120,510	8,231	<1	11	9	75	74
1982	108,952	3,668	1	13	27	71	1,339
1983	41,397	490	<1	8	2	27	15,611
1984	48,057	64	<1	3	1	144	8,281
1985	50,312	494	<1	20	9	374	5,246
1986	65,595	88	4	2	<1	107	10,221
1987	64,607	213	1	6	7	1,296	10,459
1988	86,612	138	1	39	1	1,377	7,515
1989	94,757	248	<1	132	3	96	7,193
1990	70,263	489	2	15	34	64	5,725
1991	58,327	724	37	127	4	56	23,451
1992	45,788	4,322	3	802	15	28	1,779
1993	68,233	5,171	2	592	3	43	114
1994	77,694	2,988	59	510	49	9	1,084
1995	119,406	1,341	4	386	153	8	1,600
1996	128,277	850	1	401	64	23	84
1997	138,523	247	<1	2,157	90	14	9
1998	69,654	37	<1	1,333	44	5	7
1999	166,644	528	72	983	12	10	93
2000	219,871	1,552	45	275	420	4	17
2001	190,193	1,791	1	621	156	3	
2002	178,638	761	<1	10	10	2	
2003	123,004	133	<1	76	10	<1	<1
2004	140,235	790	<1	110	8	<1	
Revenues (2004 \$)							
1981	\$33,637,916	\$1,533,074	\$352	\$7,077	\$8,762	\$50,091	\$25,705
1982	\$28,097,895	\$776,523	\$3,696	\$7,172	\$15,173	\$37,522	\$403,137
1983	\$13,536,363	\$318,627	\$1,507	\$4,499	\$2,186	\$14,325	\$4,361,231
1984	\$14,271,305	\$55,542	\$2,644	\$2,992	\$1,552	\$51,291	\$2,136,859
1985	\$15,421,476	\$482,565	\$413	\$14,177	\$6,042	\$181,391	\$2,611,286
1986	\$17,543,337	\$40,219	\$1,582	\$1,973	\$199	\$49,967	\$3,194,996
1987	\$14,986,529	\$60,061	\$1,952	\$3,480	\$2,614	\$354,075	\$2,594,637
1988	\$22,527,004	\$45,986	\$1,259	\$41,574	\$708	\$353,606	\$2,265,038
1989	\$21,500,066	\$59,046	\$192	\$41,289	\$1,200	\$32,168	\$1,704,970
1990	\$13,735,030	\$60,658	\$1,157	\$8,707	\$38,291	\$35,244	\$1,148,128
1991	\$12,620,431	\$68,913	\$8,821	\$30,090	\$5,948	\$20,074	\$4,113,897
1992	\$9,917,576	\$598,203	\$2,468	\$8,878	\$24,525	\$12,671	\$382,776
1993	\$16,117,412	\$960,698	\$2,175	\$11,177	\$4,378	\$22,921	\$28,793
1994	\$20,893,585	\$550,828	\$20,941	\$33,449	\$49,422	\$5,514	\$210,711
1995	\$31,551,759	\$406,771	\$2,335	\$20,467	\$65,318	\$4,994	\$359,783
1996	\$31,101,325	\$217,635	\$571	\$46,502	\$72,057	\$12,436	\$22,354
1997	\$32,542,741	\$97,049	\$114	\$34,389	\$103,463	\$7,631	\$3,519
1998	\$9,236,119	\$27,668	\$152	\$86,695	\$64,958	\$3,303	\$5,078
1999	\$44,814,910	\$207,991	\$17,631	\$38,683	\$28,109	\$6,552	\$7,714
2000	\$41,807,692	\$419,843	\$10,919	\$29,305	\$95,751	\$2,156	\$1,027
2001	\$30,346,586	\$405,210	\$421	\$186,545	\$42,217	\$1,720	
2002	\$31,195,887	\$193,676	\$131	\$5,719	\$25,072	\$1,363	
2003	\$34,296,632	\$76,044	\$67	\$20,520	\$27,388	\$123	\$20
2004	\$30,808,490	\$372,100	\$1	\$17,279	\$19,646	\$102	

Source: PacFIN - 1981-2001 data extracted April 2004, 2002-2004 data extracted May 2005

¹Real values are current values adjusted to eliminate the effects of inflation. This adjustment has been made by dividing current values by the current year GDP implicit price deflator, with a base year of 2004.

Table 5. Number of vessels with Pacific coast landings of CPS finfish and/or market squid by landing area, 1981-2004.

Year	Ventura &				Monterey &							
	San Diego	Orange & LA	Santa Barbara	San Luis Obispo	Santa Cruz	San Francisco	Northern CA	Other CA	Oregon	Washington	Other	
CPS Finfish												
1981	64	136	71	46	82	9	6	1	5	4	24	
1982	60	135	38	53	109	18	7		4	1	30	
1983	53	113	28	49	117	47	15		64	1	15	
1984	54	103	35	44	121	65	3	1	3	2	26	
1985	51	124	49	34	115	74			4	2	24	
1986	39	116	37	33	85	48	1	1	1	2	13	
1987	38	110	41	30	77	63	5		92	2	21	
1988	39	104	40	22	97	77	2		79	3	21	
1989	46	99	31	28	62	111	5	1	152	3	20	
1990	48	95	34	50	122	106	6		162	4	30	
1991	53	96	34	33	48	21	4		39	4	18	
1992	53	86	12	27	152	138	7		38	11	26	
1993	46	103	14	16	73	41	5		28	10	23	
1994	49	94	17	7	52	53	8	4	38	12	14	
1995	40	96	32	3	35	38	2		43	6	18	
1996	35	99	29	1	41	38	4		41	14	30	
1997	27	102	20	3	49	53	7		50	18	14	
1998	21	77	15	10	35	56	11		46	9	10	
1999	18	80	17	2	23	21	5		44	10	7	
2000	17	83	18	2	41	35	7		43	19	10	
2001	18	76	17	3	27	14	4		43	28	6	
2002	8	80	9	2	21	7	4		42	24	7	
2003	8	58	14	2	22	6	2		43	20	9	
2004	6	60	12	1	19	9	4		46	21	17	
Market Squid												
1981	6	61	26	9		1	10				3	
1982	1	51	25	7		53	2	7			3	
1983	4	44	12	4		32	22	3			7	
1984	1	9	17	6		31	8	2			4	
1985	1	44	32	5		59	10	1			23	
1986	2	43	27	7		41	4	1			8	
1987	7	41	30	3		33	17	1			7	
1988	10	51	32	4		30	7	1			11	
1989	3	48	31	7		28	3	2			5	
1990	7	42	26	3		36	9	2			3	
1991		36	24	2		30	7	1			3	
1992	1	18	14	4		36	16	4			1	
1993	1	43	25	13		33	13	1			9	
1994	3	42	31	11		34	6	3	1		9	
1995	2	59	44	8		28	4	2			27	
1996	4	62	66	8		28	2				39	
1997	3	55	50	3		28	4	11			22	
1998	3	19	45	1			3	2			18	
1999	1	76	81	3		13	1	2			44	
2000	2	86	65	1		23	1	2			42	
2001	4	62	50	2		18	3	3			27	
2002		72	61	5		33	3	1			32	
2003		43	54	9		36	17				29	
2004	3	72	52	8		23	3	1			44	

Source: PacFIN - 1981-2001 data extracted April 2004, 2002-2004 data extracted May 2005

Table 6. Number of vessels with CPS finfish or market squid as principle species¹ by principle landing area², 1981-2004.

Year	Ventura &			Monterey &							
	San Diego	Orange & LA	Santa Barbara	San Luis Obispo	Santa Cruz	San Francisco	Northern CA	Other CA	Oregon	Washington	Other
CPS Finfish											
1981	4	53	6	1	3	2				1	5
1982	9	49	8	2	2	1				1	7
1983	8	50	7		7					1	3
1984	3	35	4		18	2				1	4
1985	2	40	6	2	3	1				2	2
1986	1	33	8	1	3	1				2	
1987	2	40	6		1	2				2	
1988	3	27	3		1	2			1	2	
1989	6	32	6		4	1				2	1
1990	5	28	3		2					2	2
1991	6	37	4		5					2	1
1992	5	37	4		3	2		1		1	1
1993	2	23	3	1	1	1					1
1994	2	27	6	1	2			1			
1995	2	18	5		2				1		
1996	2	19	7		9						
1997	1	26	3	1	5						
1998	3	37	4		8		1				
1999	1	19	2		6	1			2	1	
2000		26	3		4				6	1	
2001		24	3		3				11	6	
2002	2	23	4		1				10	8	
2003	2	10	2		2		1		10	5	
2004	2	13	3		5				14	6	
Market Squid											
1981	2	14	3		33					1	
1982		16	2		35					2	
1983		6			4	1			1	7	1
1984					3				4	7	
1985		6	6		28				3		2
1986		9	4		16	1					1
1987	2	6	8		14						
1988	3	18	18		15						1
1989	2	16	12		15						1
1990	1	7	13		12						
1991		5	15		12	1					
1992			4		16	2					
1993		15	13	3	16						2
1994		8	18		19	2					4
1995		24	31		3	2				2	6
1996		30	41		7					1	15
1997		28	33		8						9
1998		3	22								6
1999		31	48		1						20
2000	1	44	32		8						9
2001	1	32	22		8	1					5
2002		33	11		17	1					6
2003		20	21		15	1					15
2004	1	41	15		8						9

Source: PacFIN - 1981-2001 data extracted April 2004, 2002-2004 data extracted May 2005

¹Principle species is the species that accounts for the greatest share of a vessel's total exvessel revenues across all species landed.

²Principle landing area is the area that accounts for the greatest share of a vessel's total exvessel revenues across all areas in which it had landings.

Table 7. Number of processors and buyers, by landing area, whose annual purchases of CPS finfish or market squid represents the largest share of their total annual exvessel expenditures, 1981-2004.

Year	Ventura &			Monterey &			Northern CA	Other CA	Oregon	Washington	Other
	San Diego	Orange & LA	Santa Barbara	San Luis Obispo	Santa Cruz	San Francisco					
CPS Finfish											
1981	1	5	4	2	1	1					2
1982		3	7							1	5
1983	1	4	5		2	1				1	3
1984	1	2	3		3	2				1	3
1985		5	2	1	2	1				1	1
1986		5	4		2	1				1	2
1987	1	6	5		1	2				2	1
1988		7	4		1	1				2	1
1989	3	8	3		1	1				2	1
1990	6	5	2		1	2				2	1
1991	2		3		2	1				2	1
1992	1	7	4		1	1				1	
1993		4	5		2	1				1	
1994	2	6	4		2	1		1		1	
1995	1	7	4			1			1		2
1996	2	4	6		1	1				1	1
1997	1	9	6		1	1				1	
1998	1		6		3	1	1			1	2
1999	2	5	4		2	2	1			1	
2000		9	4		3				2	1	1
2001		6	6	1		1	1		4	1	
2002	2	7	6		1	1			3	1	
2003	2	8	4		1		1		3	2	
2004	2	7	8	1	2		1		5		1
Market Squid											
1981		1	2		5	4					
1982		1			7	1	1			2	
1983						3				3	
1984					1					2	
1985			3		6						1
1986		1	3		6	1					1
1987		1	3		4	1					
1988		2	3	2	2	2					
1989		1	11	1	3	2					
1990		2	6		4						
1991			6			1					
1992			4			3					
1993	1		8	1	1	1					
1994		2	16	1	2			1			1
1995		1	16								1
1996		4	10		2					1	3
1997		6	10		1						1
1998	1		3								
1999		5	19								5
2000	1	9	20	1	1						5
2001	1	3	14	1	1		1				2
2002		4	11	1							4
2003		4	12	1	2						1
2004		3	16	2	1						2

Source: PacFIN - 1981-2001 data extracted April 2004, 2002-2004 data extracted May 2005

Figure 1. Percentage contribution of Pacific coast CPS finfish and market squid landings to the total exvessel value of all Pacific coast landings, 1981-2004.

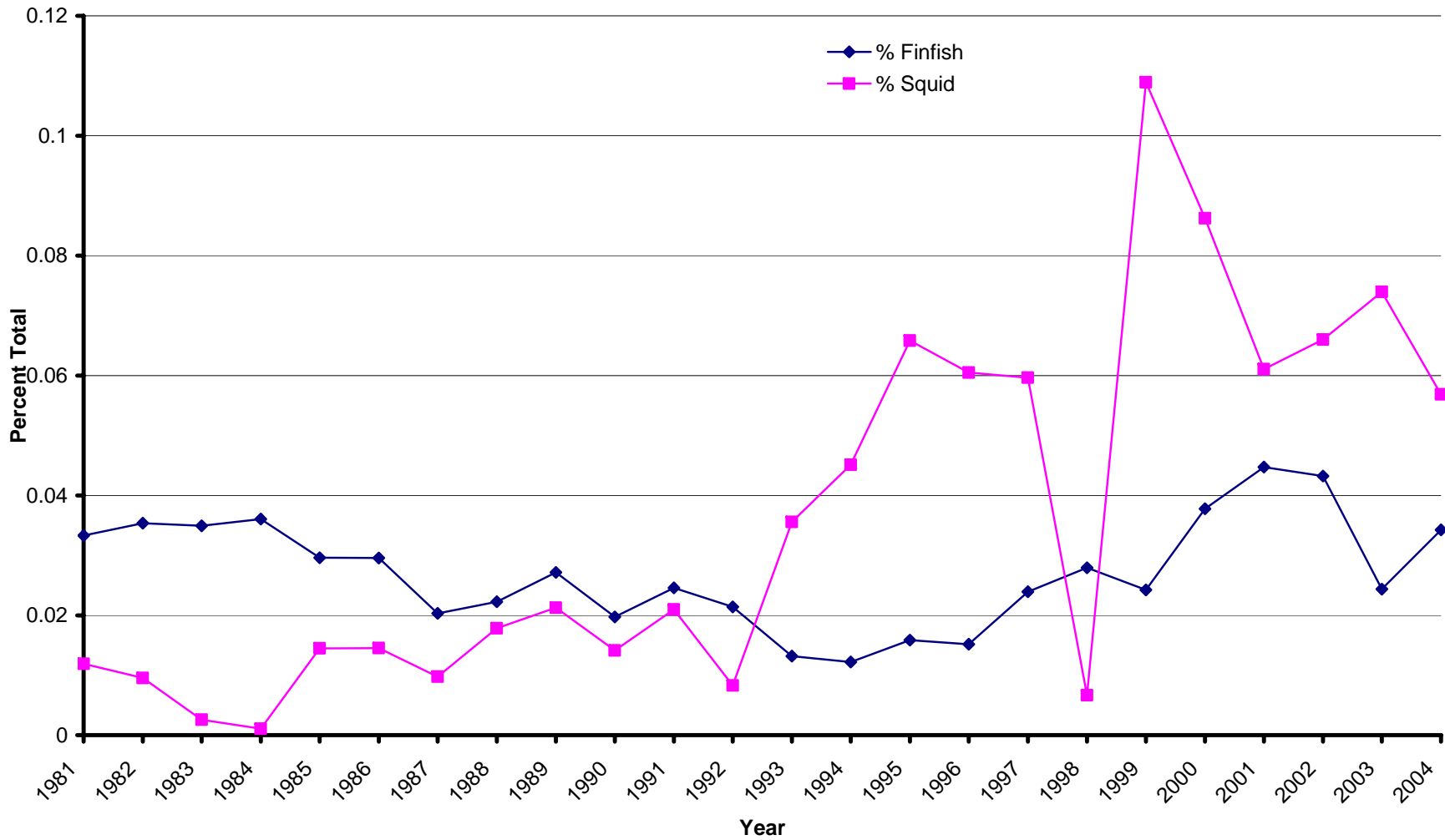


Figure 2. Pacific coast CPS finfish landings and real exvessel price (\$/lb, 2004 \$), 1981-2004.

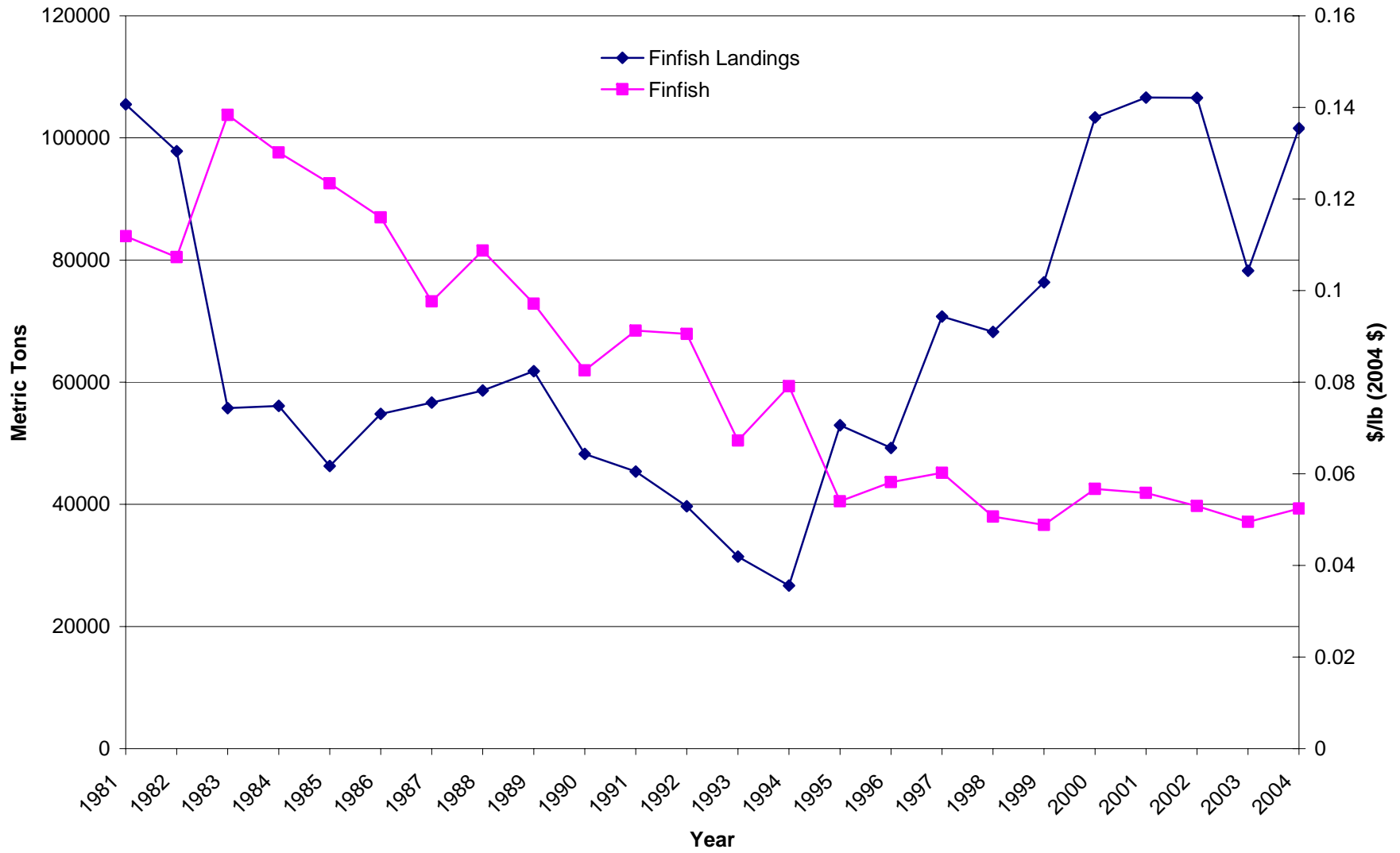


Figure 3. Pacific coast market squid landings and real exvessel price (\$/lb, 2004 \$), 1981-2004.

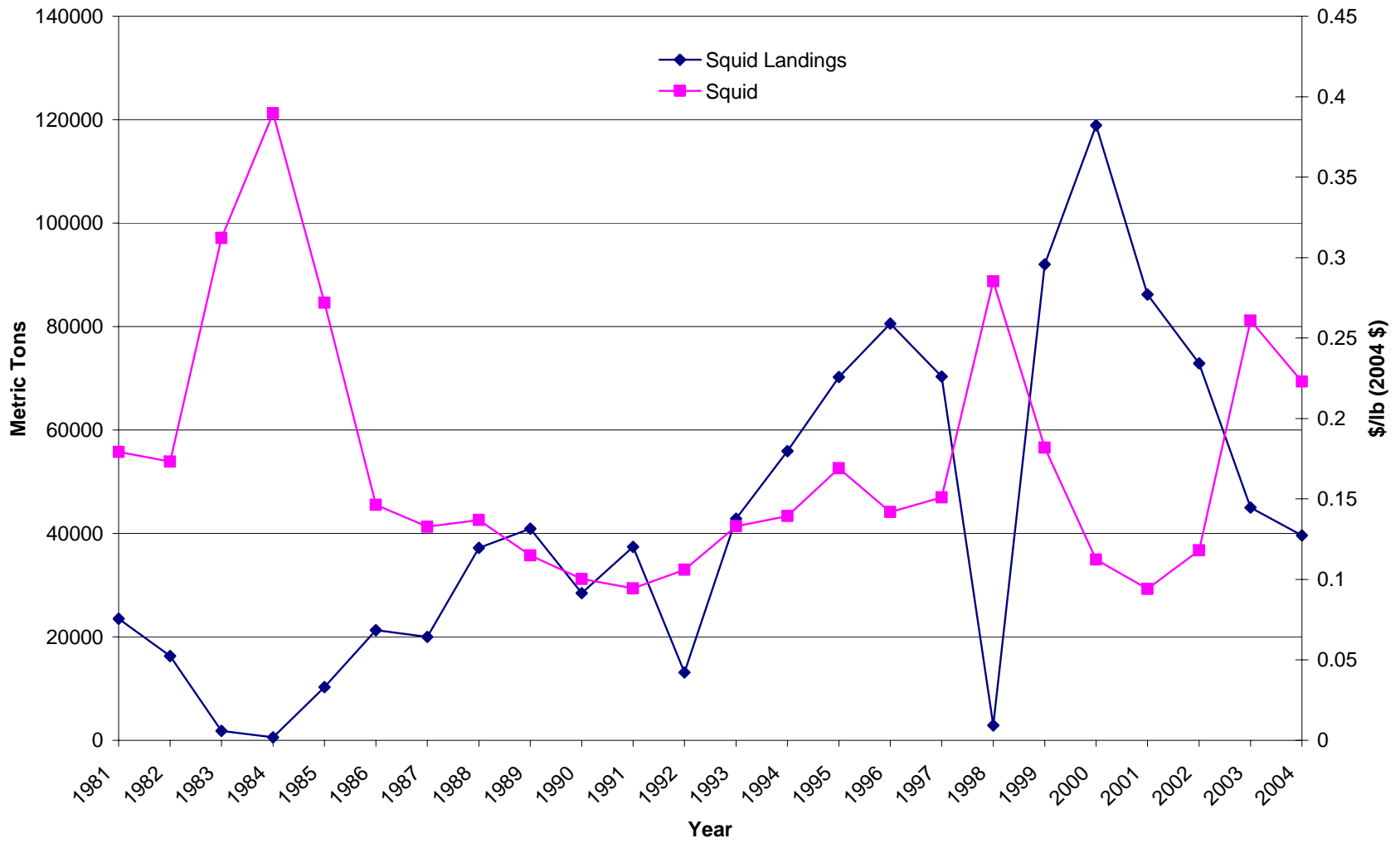


Figure 4. Number of vessels with Pacific coast landings of CPS finfish, and number for which CPS finfish was the principle species, 1981-2004.

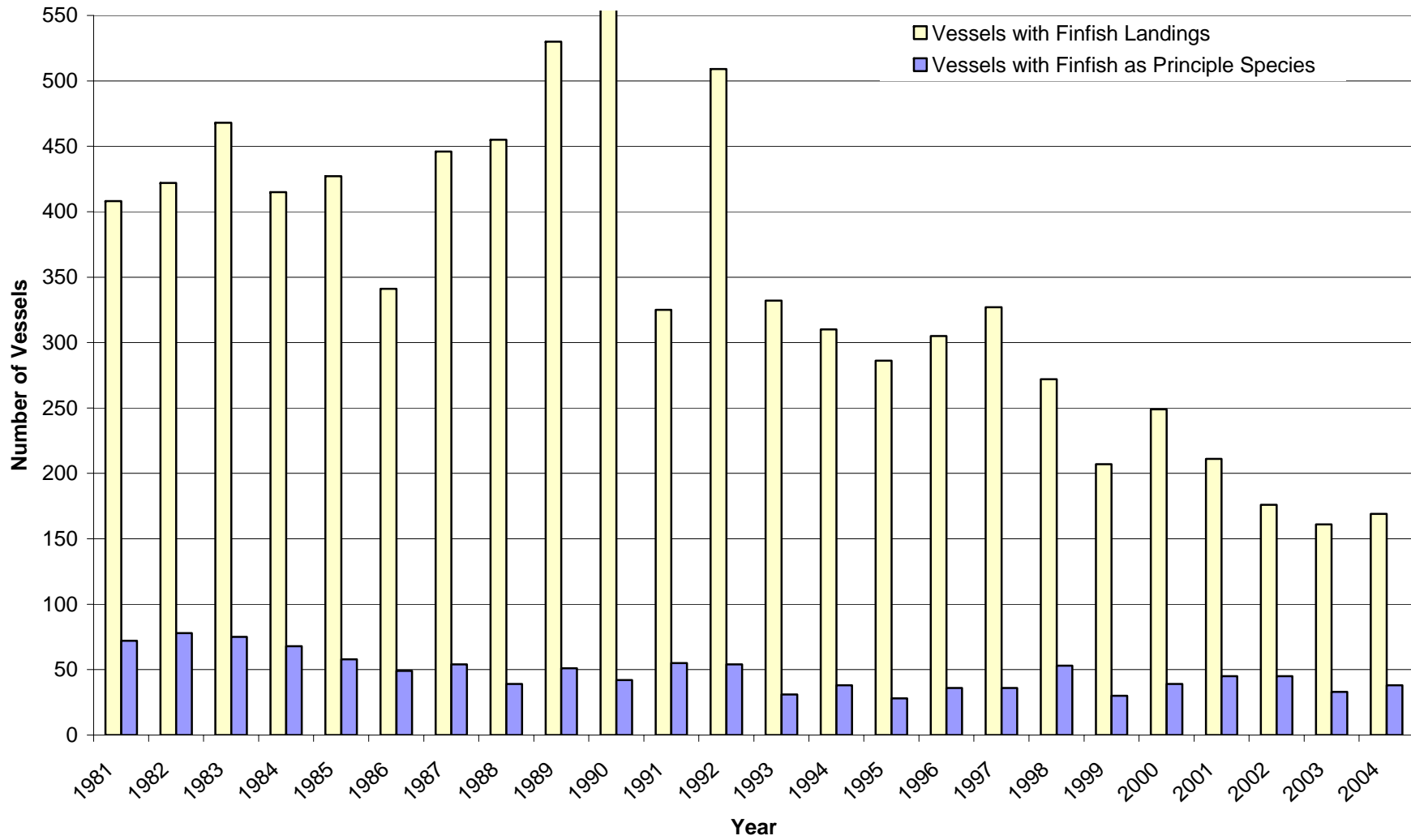


Figure 5. Number of vessels with Pacific coast landings of market squid, and number for which market squid was the principle species, 1981-2004.

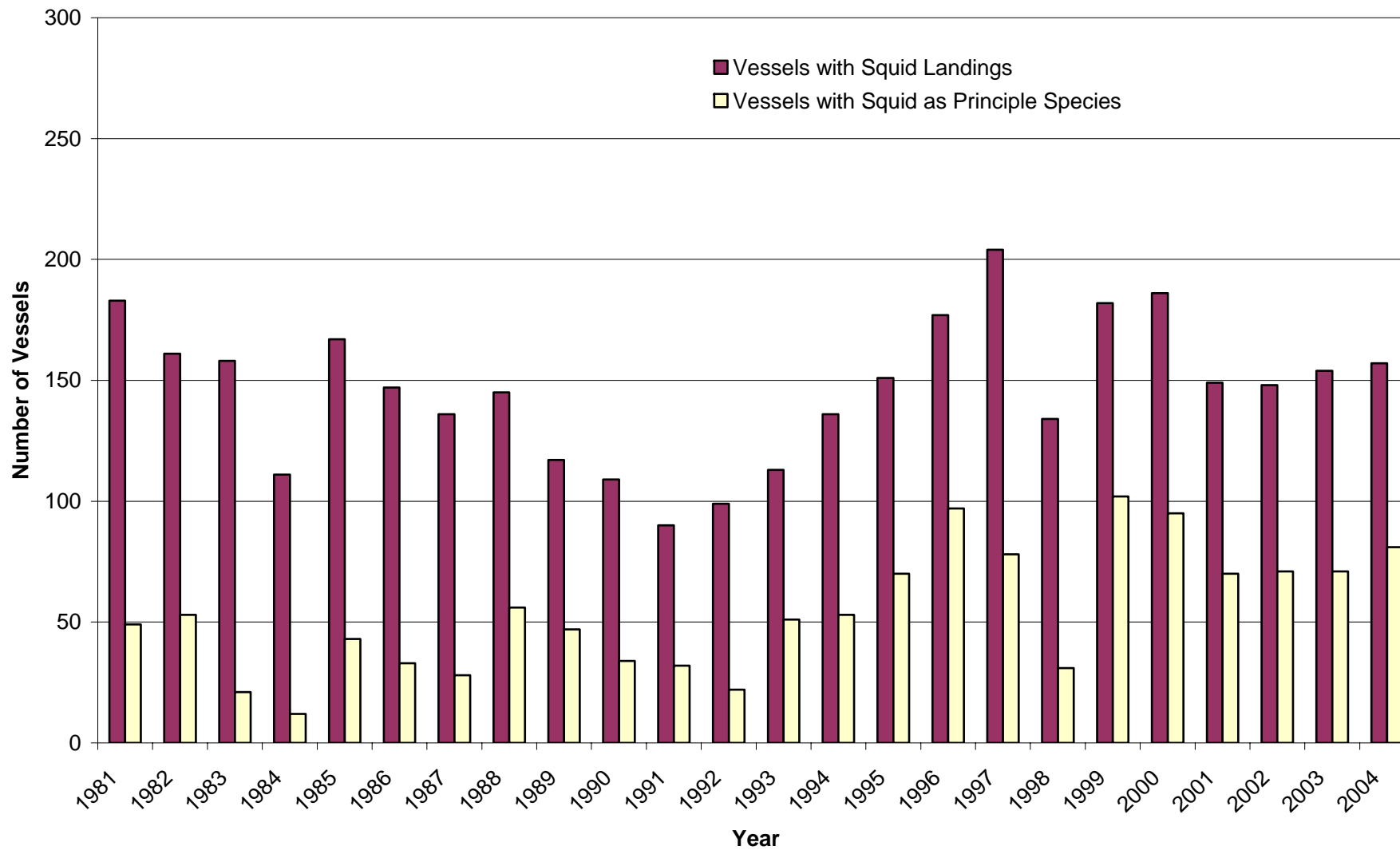


Figure 6. Average share principle species revenues of total revenues for vessels whose principle species was CPS finfish, market squid or non-CPS, 1981-2004.

