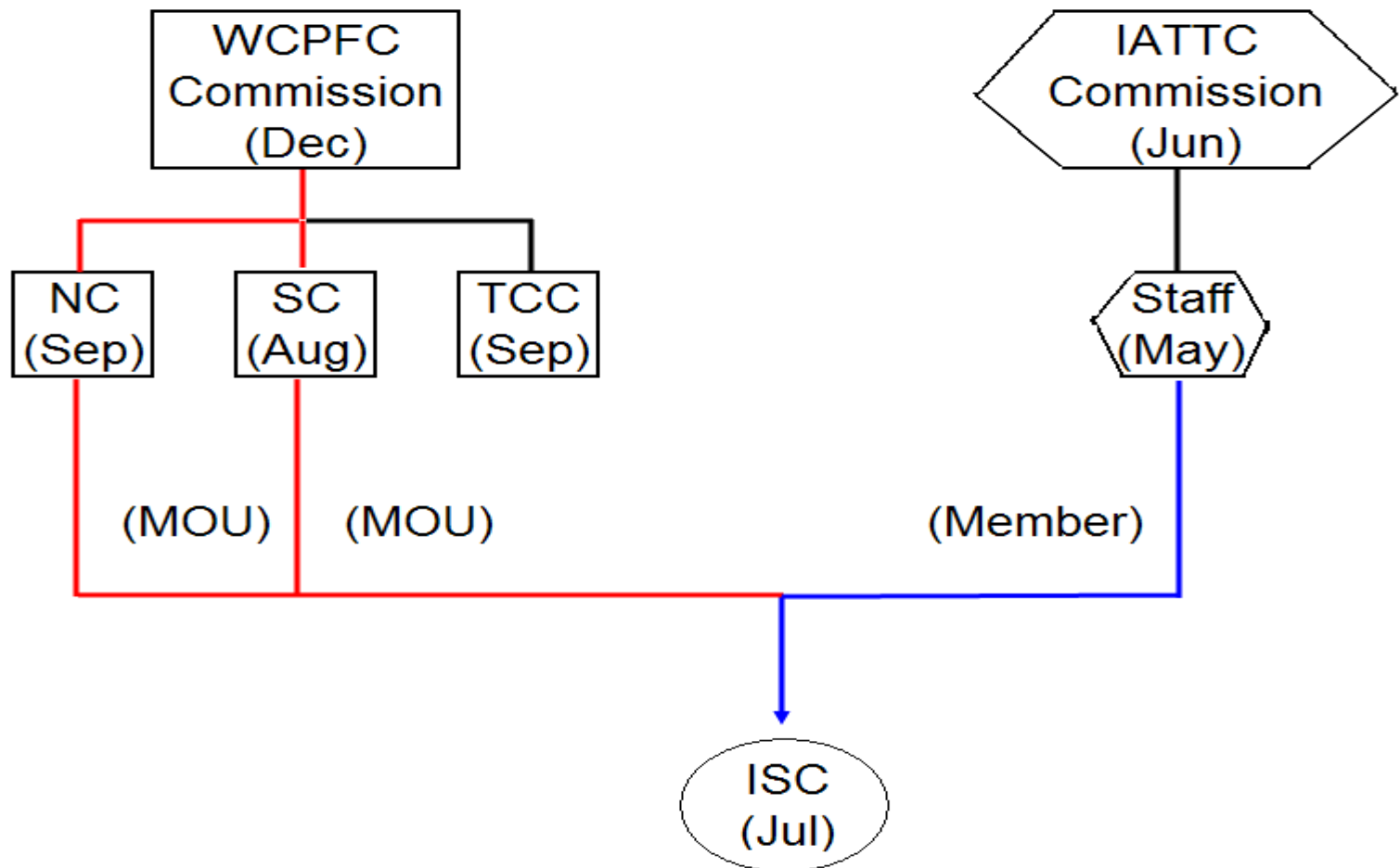


Southwest Fisheries Science Center
HMS Report
November 3, 2008

Pacific Fisheries Management Council Meeting

San Diego, CA

ISC Relationship to the WCPFC and IATTC



North Pacific Albacore (ALB)

ISC

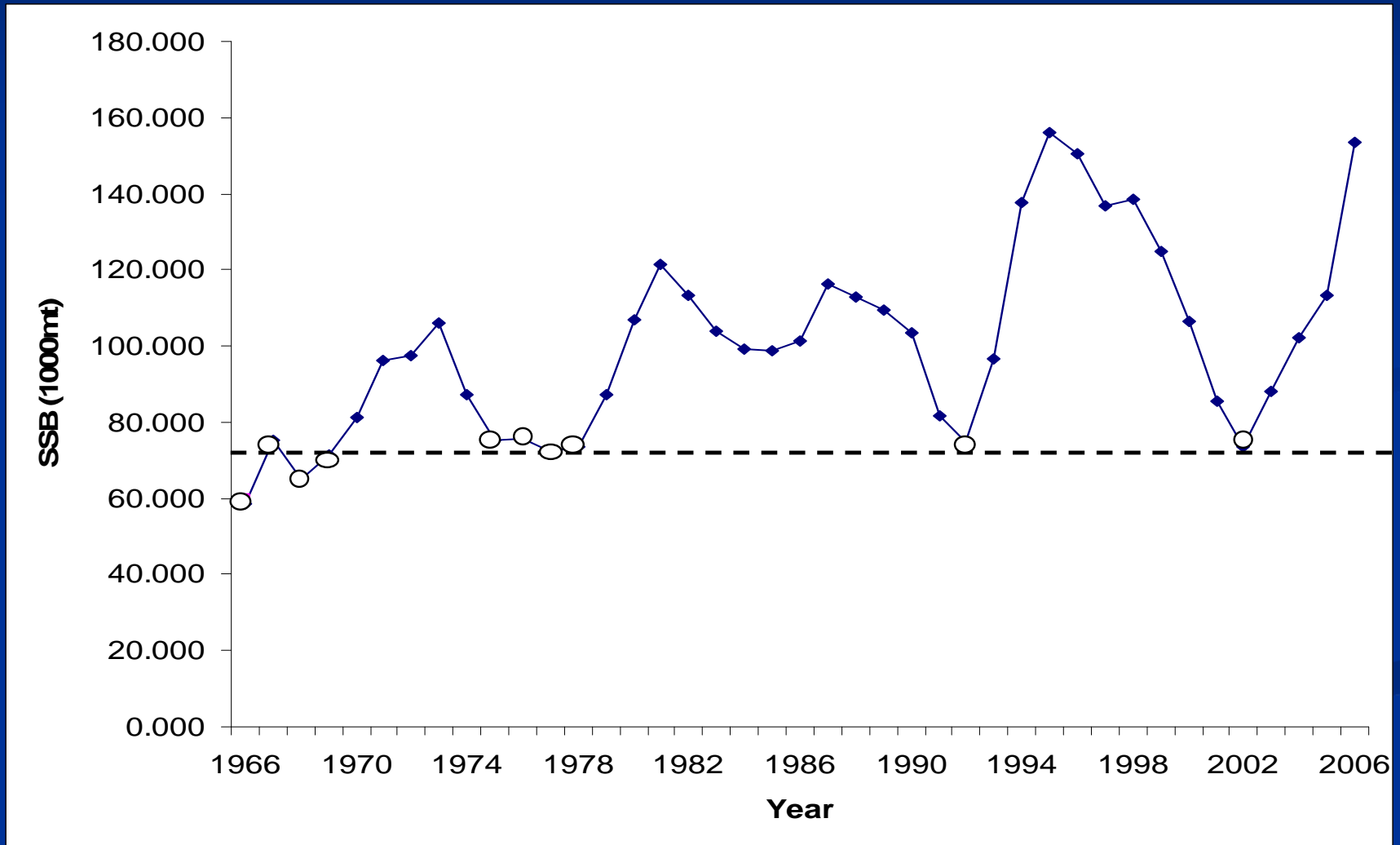
- No new stock assessment (next SA in 2010).
- Slightly more optimistic view of the SSB level since 2006 assessment
- No change in conservation advice, i.e., with continued current high $F = 0.75$, fishing mortality rate will have to be reduced and guidance on applicable BRPs is provided

North Pacific Albacore (ALB)

NC

- No new recommendation on limits to fishing mortality.
- Members to evaluate a proposal to strengthen fishing effort reporting rule.
- Members agreed to use interim management objective of maintaining the SSB above the average of the 10 lowest SSB points.

Estimated Spawning Stock Biomass of North Pacific Albacore



Pacific Bluefin Tuna (PBF)

ISC

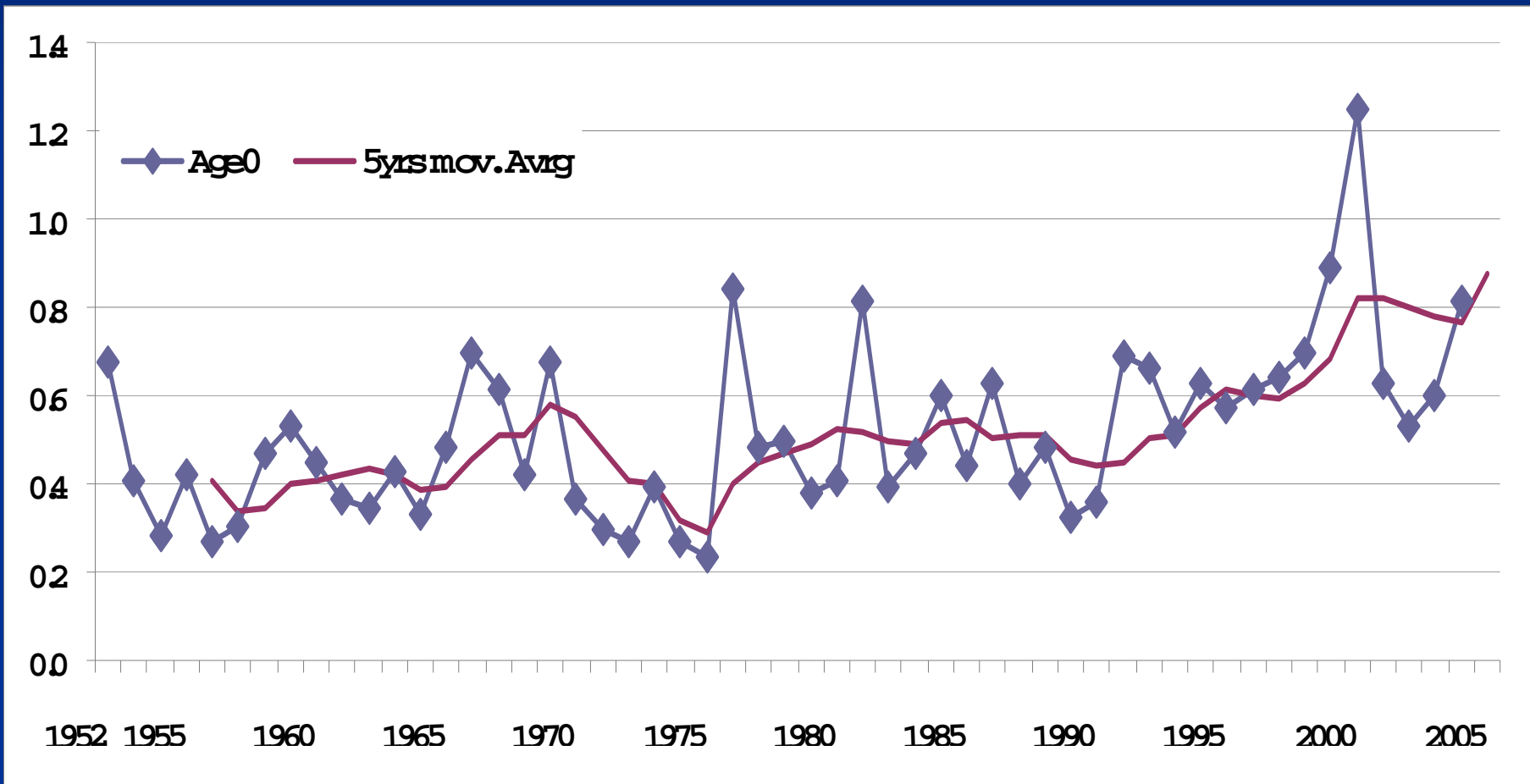
- Stock assessment performed in 2008.
 - Current catch-- around 24,000 t
 - Current SSB-- about 20,000 t or about average for the historical time series (1952-2005)
 - Recruitment-- large variation, e.g., range 2 M to 25 M
 - F-- high for ages 0-3 and with increasing trend
 - Current overall F—exceeds typically used BRPs
- Noted need to further review the stock assessment results
- Advised current F not be increased.

Pacific Bluefin Tuna (PBF)

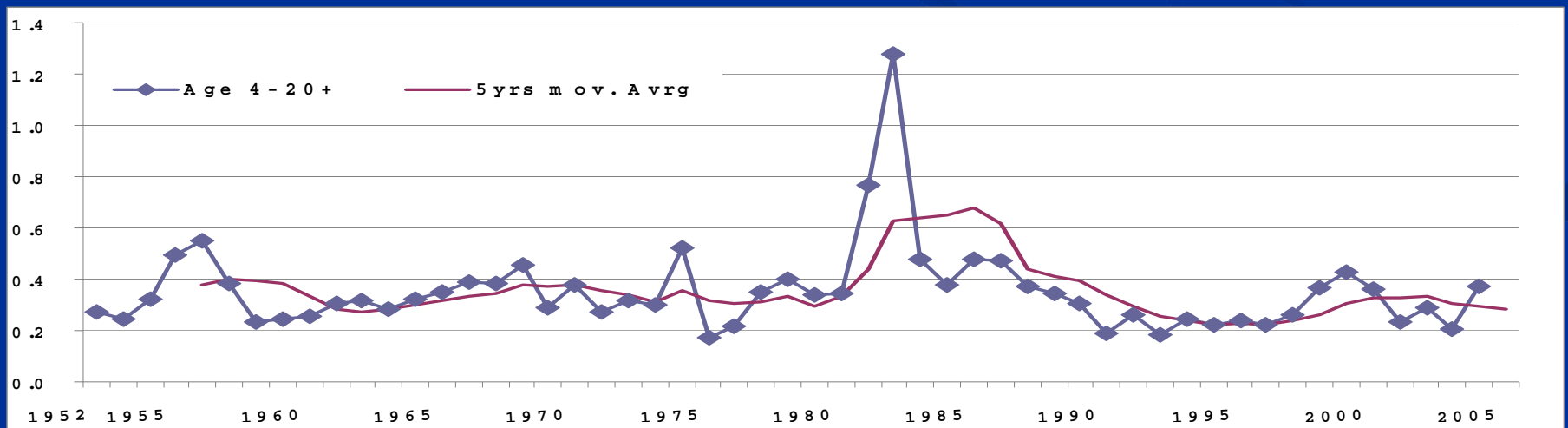
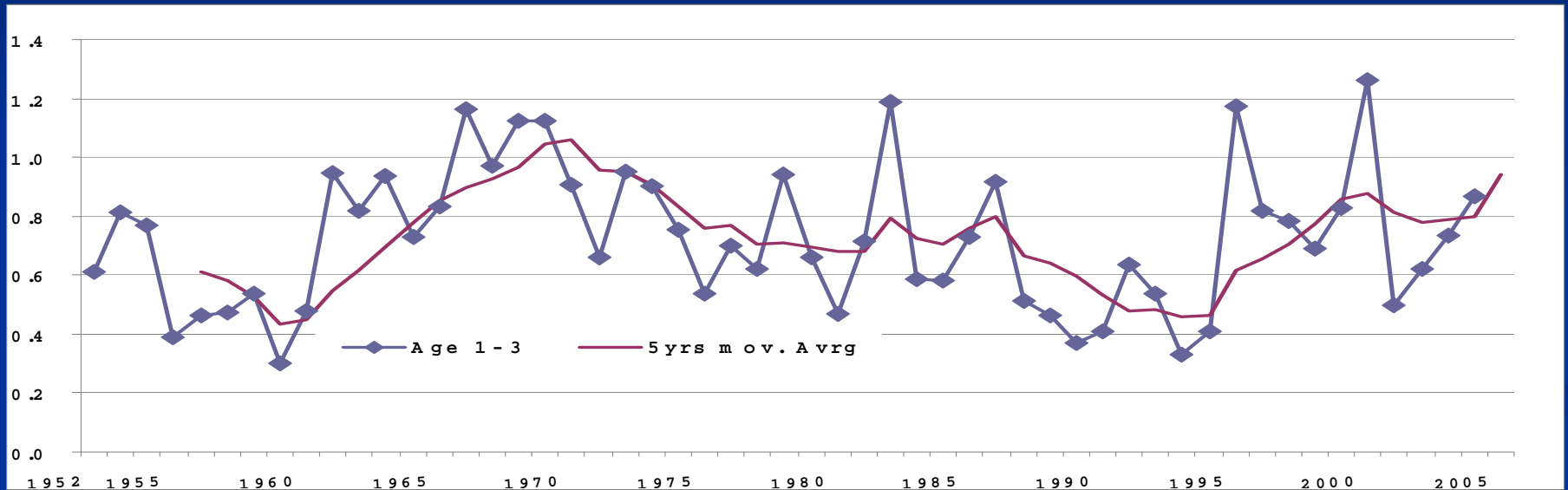
NC

- Recommended interim management objective of ensuring no increase in current level of fishing effort.
- Recommended total fishing effort in the area north of 20° N not be increased in 2009-2011

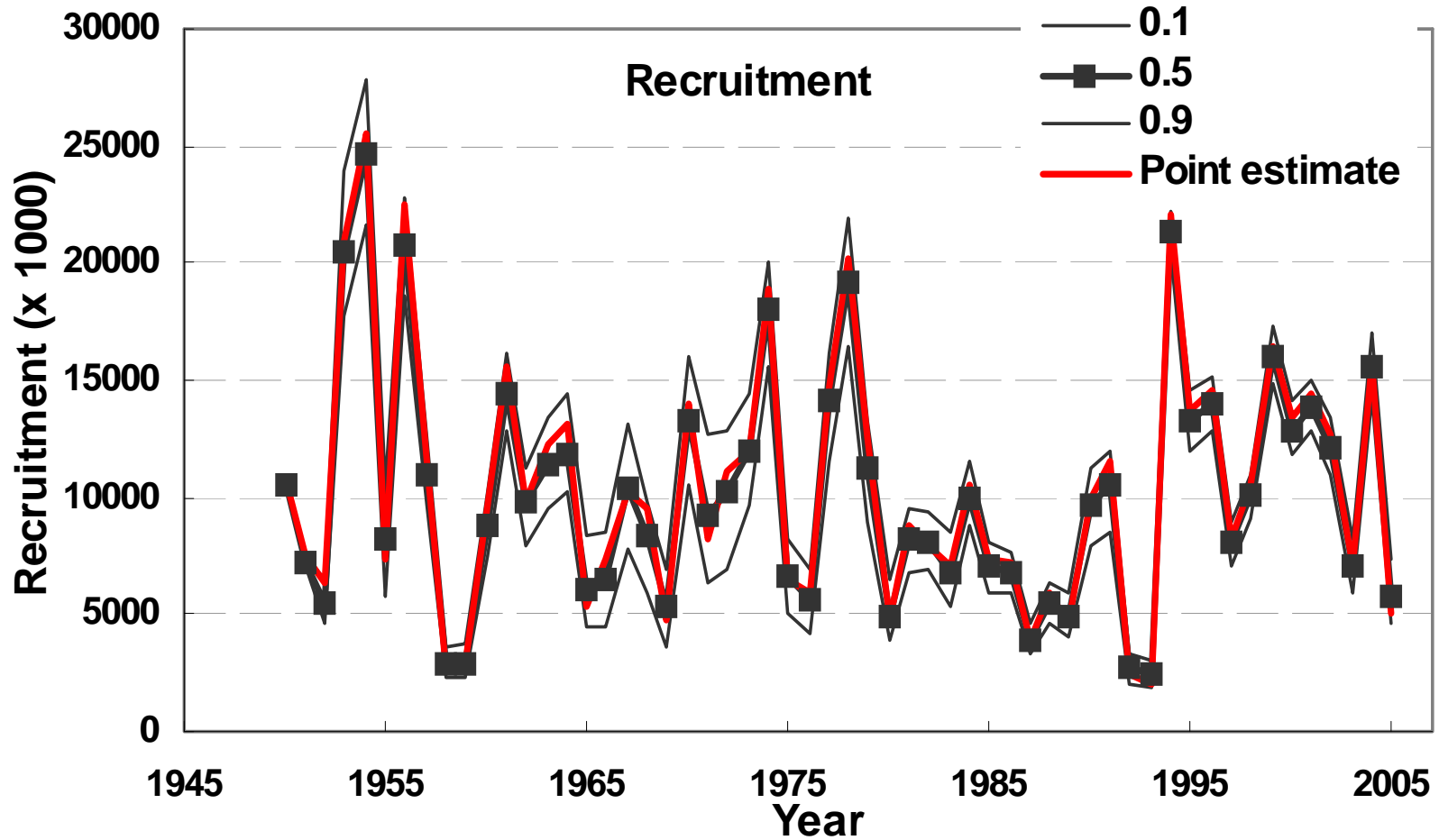
Fishing Mortality Rate (F) for Pacific Bluefin Tuna, Age 0



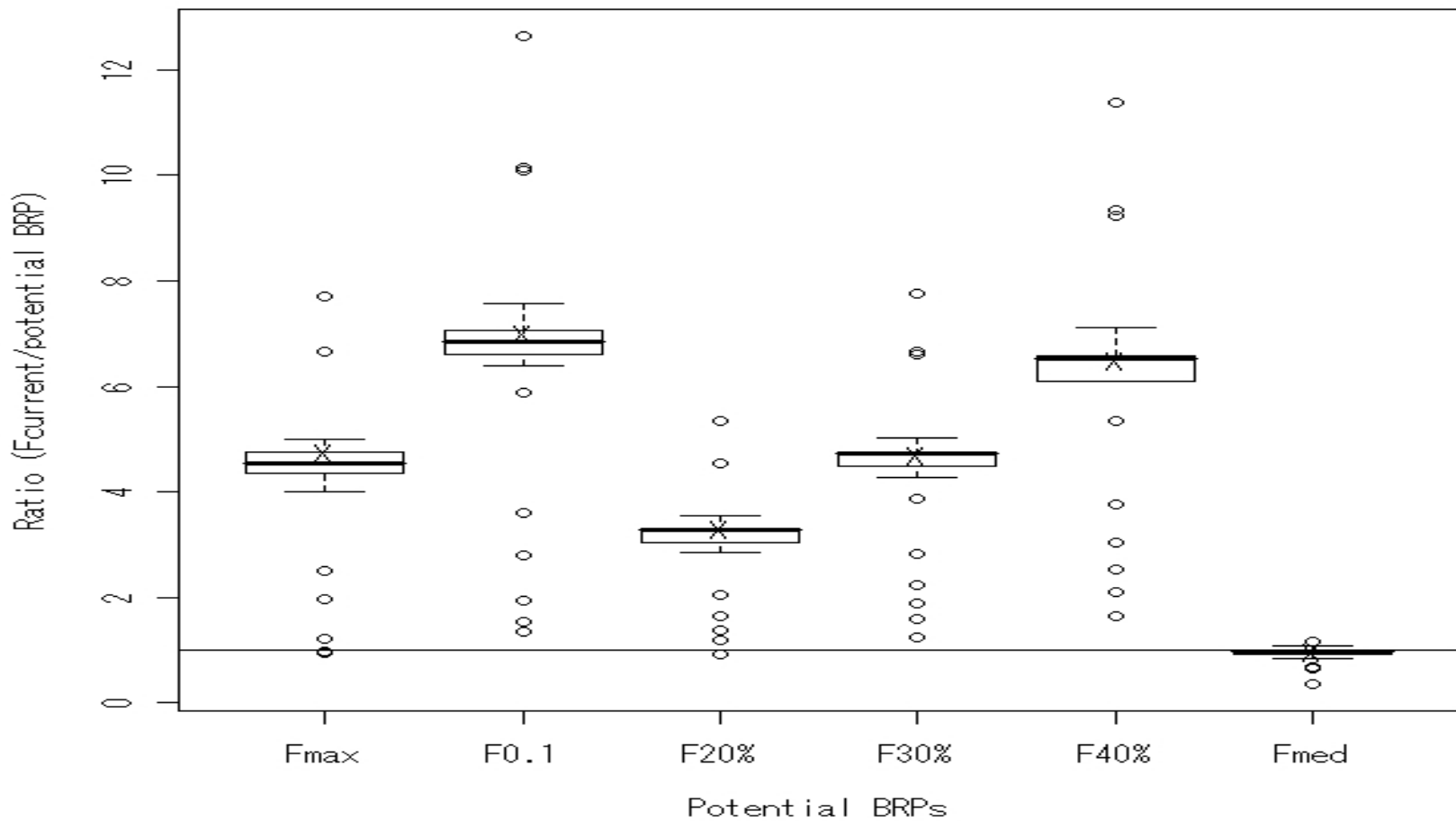
Fishing Mortality Rate (F) for Pacific Bluefin Tuna, Ages 1-3 and Ages 4-20+



Estimated Recruitment for Pacific Bluefin Tuna



Pacific Bluefin Tuna



North Pacific Striped Marlin (MLS)

ISC

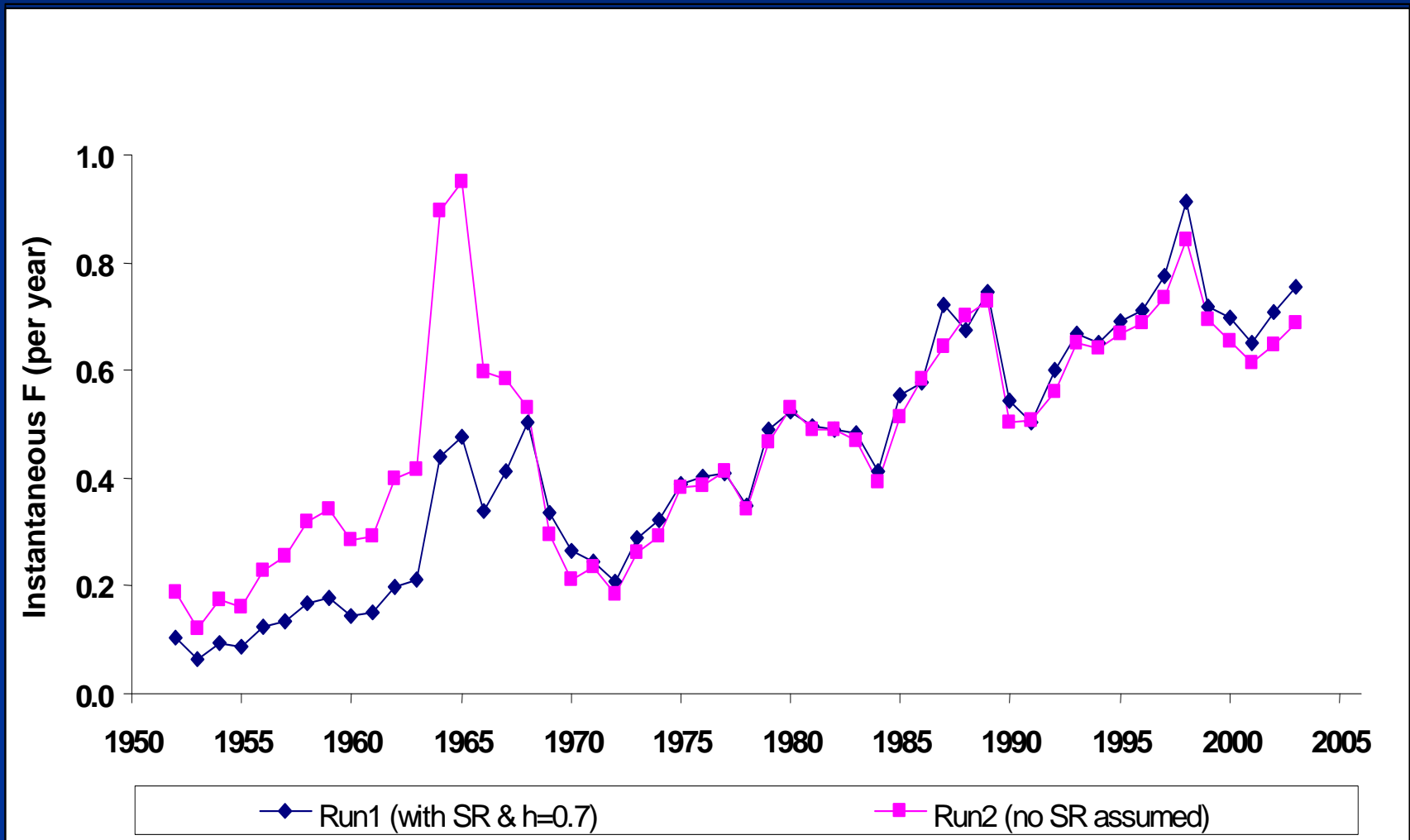
- No new stock assessment (next SA in 2010)
- Reviewed results of 2006 stock assessment
 - Current SSB at a historically low level
 - Current F high and exceeds typically used BRPs
- No change in conservation advice, i.e., current F should be reduced
- Determined majority of biomass ($\sim 2/3$) reside north of 20

North Pacific Striped Marlin (MLS)

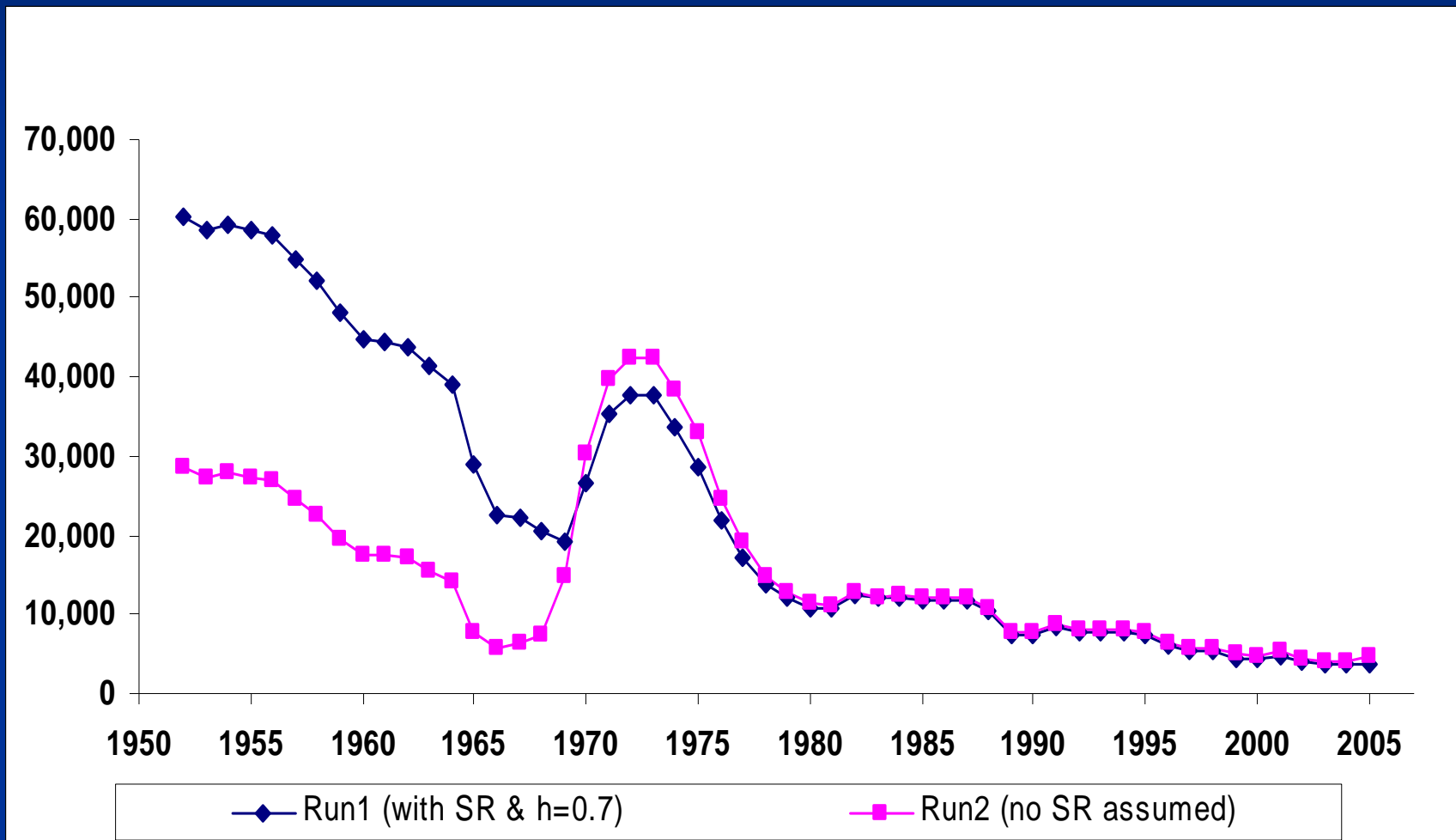
NC

- Waiting WCPFC decision on MLS as “northern stock.”
- Agreed to intensity efforts for WCPFC assignment of developing a draft CMM for reducing F

Fishing Mortality Rate (F) for Striped Marlin Spawners (Ages 5+)



Striped Marlin Spawning Stock Biomass (mt), 1952-2005



Striped Marlin Biomass above 20° N in the North Pacific Ocean

Decade	Proportion		
	Model 1 (h=0.7)	Model 2 (h=1.0)	Catch
1952-1959	N/A	N/A	0.96
1964-1969	0.71	0.66	0.82
1970-1979	0.73	0.71	0.66
1980-1989	0.65	0.65	0.67
1990-1999	0.64	0.64	0.77
2000-2004	0.64	0.64	0.73

Questions?